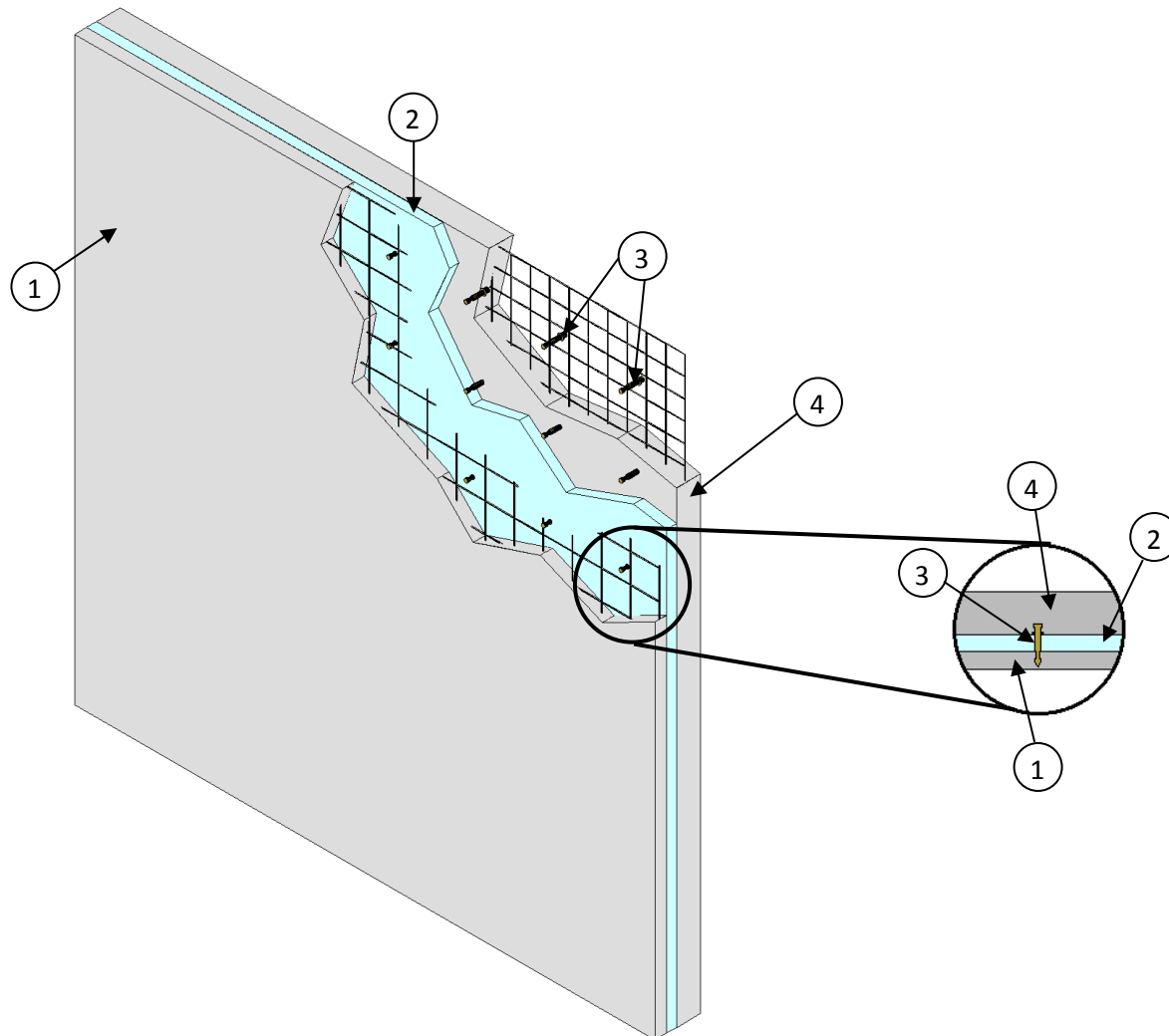

HK Composites
Design No. HC/TUC 240-01
Asymmetric Wall Assembly
ST Series Wall Tie
ASTM E119
Rating: 240 minutes
Loading Condition: 4000 lb/ft



- 1. FASCIA:** Cast a nominal 2-1/2 in. thick fascia constructed of normal weight, 4000 psi, slump 6.5 in. concrete. Use SUNTUF®, 1 in. tall horizontal plastic chairs to support 6 in. x 6 in. wythe reinforcing mesh at the approximate center of the cast.
- 2. POLYSTYRENE FOAM PANELS:** Install nominal 2 in. thick Type X Rigid, Cellular Polystyrene Thermal Insulation that is in compliance to ASTM on top of the fascia

(Item 1). Secure the foam to the fascia prior to concrete cure using the HK Composites Wall Tie (Item 3)

- 3. CERTIFIED MANUFACTURER:** HK Composites

CERTIFIED PRODUCT: Wall Tie

CERTIFIED MODEL: ST Series Wall Tie

Install the HK Composites ST Series Wall Tie (nominal 5 1/4 in. in length) with pointed end into fascia (Item 1) through Styrofoam panels (Item 2) spaced 8 in. from edges of Styrofoam panels and nominally 16 in. on center (oc) throughout.

4. **CONCRETE WALL:** Cast nominal 5 in. thick concrete wall on top of the polystyrene foam panels (Item 2) composed of normal weight, 4000 psi, slump 6.5 in. concrete. Prior to casting, install GripRite™ Prolok™ rebar/mesh chairs to support 4 in. x 4 in. wythe reinforcing mesh within the center of the cast.