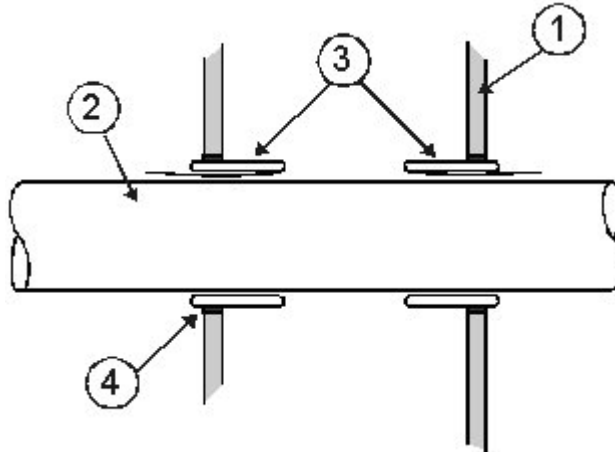


DESIGN NO. 3M/PV 120-05
 VERTICAL (WALL), RATINGS - SEE BELOW, HOLE SIZE - SEE ITEM 3
 TEST PRESSURE DIFFERENTIAL - 50 Pa (0.20" OF WATER)

Penetrant	Max. Pipe ID	CAN/ULC-S115 F, FH, FT, FTH
PVC	2"	1 & 2 Hr
ccABS	3"	1 & 2 Hr
ABS	3"	1 & 2 Hr
PVC - Thin Wall	2"	1 & 2 Hr



1. **Wall Assembly:** Code conforming 1 or 2 hour fire-rated wall, nominal 2" x 4" steel/wood framed gypsum wallboard, wall assembly.
2. **Penetrant:** (See table of ratings) Schedule 40, ccABS, ABS, PVC pipes for use in DWV (Drain, Waste & Vent) or Closed (Process & Supply) piping systems and PVC-Thin Wall Vacuum Tubing (nominal 2" diameter), ratings achieved will equal that of the wall assembly.
3. **Firestop System Components:** *3M™ FireStrap™: Install with 1/4" of the firestop exposed outside the surface of the gypsum wall assembly according to the manufacturers instructions.

Use *3M™ FireStrap™ 1-1/2" for PVC - Thin Wall Vacuum Tubing (nominal 2" diameter).

Pipe ID	Hole Size
1-1/2"	2-1/2"
2"	3"
3"	4-1/2"
4. **Sealant:** *3M™ Fire Barrier CP-25WB+ Caulk, *3M™ Fire Barrier IC 15WB+ Sealant or *3M™ FireDam 150+ Caulk, applied within the annular space between the device (Item 3) and the opening to provide a smoke seal. Firestop system is applied to both sides of the wall.

Note: Metric conversion factor, inches x 25.4 = mm.

*Component bearing the Warnock Hersey Mark.