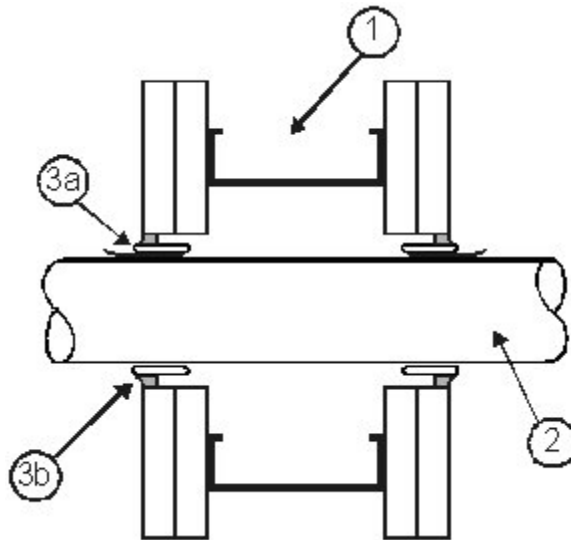


DESIGN NO. 3M/PV 120-06
 VERTICAL (WALL); RATINGS: SEE BELOW; OPENING DIAMETER - SEE ITEM 3
 TEST PRESSURE DIFFERENTIAL - 50 Pa (0.20" OF WATER)

Penetrant	Maximum Pipe ID	CAN/ULC-S115 F, FH, FT, FTH
PVC	2"	1 & 2 Hr
System XFR	2"	1 & 2 Hr



1. **Wall Assembly:** Code conforming 1 or 2 Hour fire-rated wall, nominal 2" x 4" steel or wood framed gypsum wallboard wall assembly.
2. **Penetrant:** (See also table of ratings) Schedule 40, PVC and System XFR pipes for use in DWV (Drain, Waste & Vent) or Closed (Process & Supply) piping systems, ratings achieved will equal that of the wall assembly.
3. **Firestop System Components:**

Pipe ID	Opening Diameter
1-1/2"	3"
2"	3"

a. * 3M™ FireStrap™ or *3M™ FirePlug™: Install with 1/4" of the firestop exposed outside the surface of the gypsum wall assembly according to the manufacturers instructions.
 b. Sealant: *3M™ Fire Barrier CP-25WB+ Caulk, *3M™ Fire Barrier IC 15WB+ Sealant or *3M™ FireDam 150+ Caulk, seal the annular space between the opening and the firestop device, to 1/4" thickness, flush with the wall surface on both sides of the wall.

Note: Metric conversion factor, inches x 25.4 = mm.
 *Component bearing the Warnock Hersey Mark.