

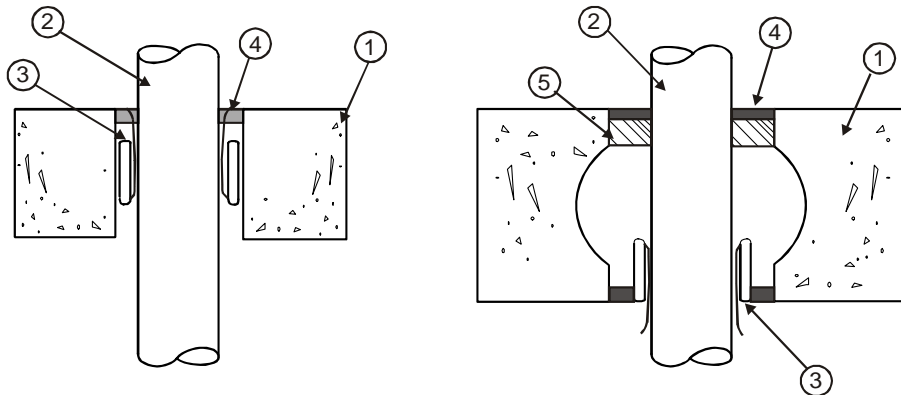
HORIZONTAL or VERTICAL (FLOOR or WALL)

RATINGS - See Below

Hole Size - See Item 3

TEST PRESSURE DIFFERENTIAL - 50 Pa (0.20 in. of water)

Penetrant	Maximum Pipe ID	ULC-S115-95 CAN4-S115-M F, FH, FT, FTH
PVC	2"	2 HR
ccABS	3"	2 HR
ABS	3"	2 HR
PVC - Thin Wall	2"	2 HR



**Hollow Core Concrete Floor Applications**

1. **Floor or Wall Assembly** - Code conforming 2 HR fire-rated floor or wall assembly, nominal 4-1/2" thickness, normal or low density cast concrete or Hollow Core Concrete. Wall may also be constructed of nominal 8" thick concrete blocks (filled or unfilled).

2. **Penetrant** - (See also table of ratings) Sch. 40, ccABS, ABS and PVC pipes for DWV or Closed (Process & Supply ) applications and PVC -Thin Wall Vacuum Tubing (nominal 2" Diameter), ratings achieved will equal that of floor or wall assembly.

**Firestop System Components:**

3. \*IPEX Firepro™ System 2 - Install within opening, recessed 1-1/4" from either surface, for solid concrete applications, according to the manufacturers instructions. For Hollow Core Concrete install on the underside flush with the bottom surface, according to the manufacturers instructions. For walls apply firestop system to both sides. To reduce opening size use \* 3M™ Fire Barrier Mortar or non-shrink grout.

\*IPEX Firepro™ System 2, 1-1/2" for PVC -Thin Wall Vacuum Tubing (nominal 2" Diameter)

Pipe ID	Hole Size
1-1/2"	2-1/2"
2"	3"
3"	4-1/2"

4. **Sealant** - \* 3M™ CP-25WB+ Caulk or \*3M™ FireDam™ FD-150+ Caulk, applied to 1/2" thickness flush with the floor or wall surface. Firestop system is applied to both sides for wall applications.

5. **Forming Material** - Minimum 1" thickness of mineral wool, 4 pcf, tightly packed around the pipe, recessed 1/2" from the floor surface.

**Note:** metric conversion factor, inches x 25.4 = mm

\*Component bearing the Warnock Hersey Certification Mark