

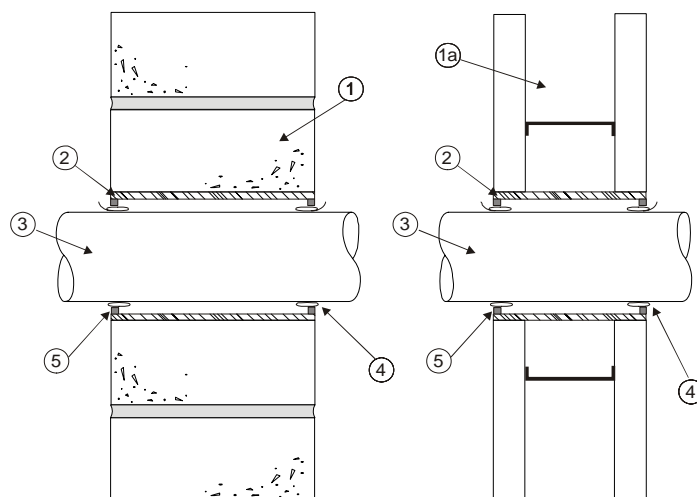
VERTICAL (WALL)

RATINGS - See Below

HOLE SIZE - See Item 4

TEST PRESSURE DIFFERENTIAL - 50 Pa (0.20 in. of water)

Penetrant	Maximum Pipe ID	ULC-S115-95 CAN4-S115-M F, FH, FT, FTH
PVC	3"	1 & 2 HR
ccABS	3"	1 & 2 HR
ABS	3"	1 & 2 HR
PVC - Thin Wall	2"	1 & 2 HR



1. **Wall Assembly:** Code conforming 2 HR fire-rated wall assembly, nominal 4-1/2" thickness, normal or low density cast concrete. Wall may also be constructed of nominal 8" thick concrete blocks (filled or unfilled).
- 1A **Wall Assembly:** Code conforming 1 or 2 HR fire-rated wall, nominal 2" x 4" steel/wood framed gypsum wallboard, wall assembly.
2. **Steel Sleeve:** Minimum 28 gauge galvanized steel, positioned within the opening with a 1" overlap, maximum 4-1/2" diameter, sleeve may be flush with wall surface, or extend a 1/2" beyond either surface of wall. Sleeve is cast or grouted into masonry walls.
3. **Penetrant:** (See also table of ratings) Sch 40, ccABS, ABS, and PVC pipes for DWV or Closed (Process and Supply) applications and PVC -Thin Wall Vacuum Tubing (nominal 2" Diameter), ratings achieved will equal that of the wall assembly.

#### Firestop System Components:

4. \* IPEX Firepro™ System 2: Install with 1/4" of the firestop exposed outside the surface of the wall assembly within the steel sleeve, according to the manufacturers instructions.  
 Use \*IPEX Firepro™ System 2, 1-1/2" for PVC -Thin Wall Vacuum Tubing (nominal 2" Diameter)

Pipe ID	Hole Size
1-1/2"	2-1/2"
2"	3"
3"	4-1/2"

5. **Sealant** - \* 3M™ CP-25WB+ Caulk or \*3M™ FireDam™ FD-150+ Caulk, apply to seal the space between the \*IPEX Firepro™ System 2 and the steel sleeve and between the steel sleeve and the substrate. Firestop system is applied to both sides of the wall.

**Note:** metric conversion factor, inches x 25.4 = mm

\*Component bearing the Warnock Hersey Certification Mark

