

Construction Specialties, Inc.

Design No. CSI/EJCA 120-01

Floor Joint System

FB-17 Fire Barrier

ASTM E 1966, UL 2079

Rating: 2 Hour

CAN/ULC-S115

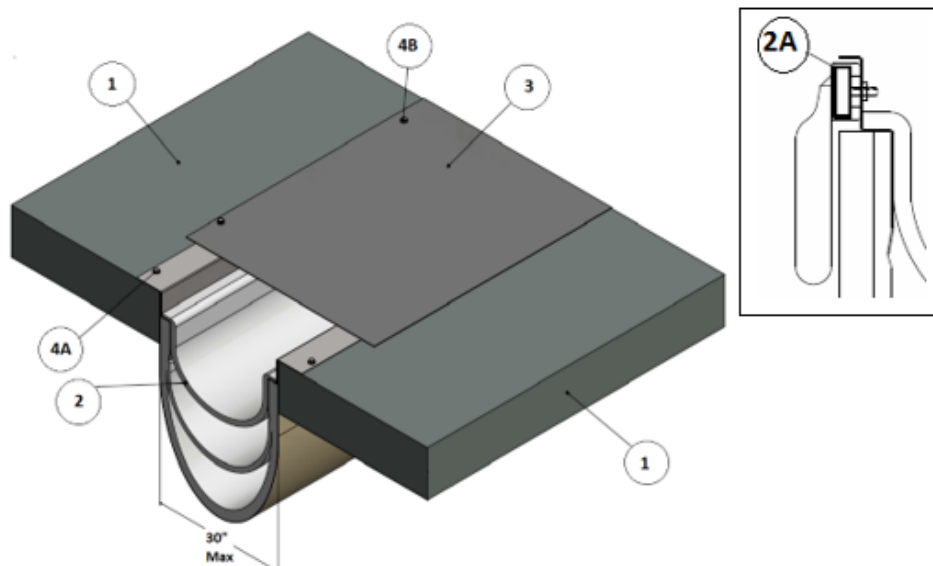
FTH Rating: 2 Hour

UL 2079, CAN/ULC-S115

L-Rating < 1 CFM/LF, < 1.55 L/s/m (Ambient and Elevated)

ASTM E 1399

Cycling – Class IV (See Table 1)



Model No.	Nominal Joint Size	Max. Width	Min. Width
2FB-17-6F9	6 in.	9 in.	3 in.
2FB-17-6L9	6 in.	9 in.	3 in.
2FB-17-8F12	8 in.	12 in.	3 in.
2FB-17-8L12	8 in.	12 in.	3 in.
2FB-17-10F15	10 in.	15 in.	3 in.
2FB-17-10L15	10 in.	15 in.	3 in.
2FB-17-12F18	12 in.	18 in.	3 in.
2FB-17-12L18	12 in.	18 in.	3 in.
2FB-17-14F21	14 in.	21 in.	4 in.



Model No. (con't)	Nominal Joint Size	Max. Width	Min. Width
2FB-17-14L21	14 in.	21 in.	4 in.
2FB-17-16F24	16 in.	24 in.	4 in.
2FB-17-16L24	16 in.	24 in.	4 in.
2FB-17-18F27	18 in.	27 in.	4 in.
2FB-17-18L27	18 in.	27 in.	4 in.
2FB-17-20F30	20 in.	30 in.	4 in.
2FB-17-20L30	20 in.	30 in.	4 in.

Table 1.

1. CONCRETE FLOOR ASSEMBLY: Use a 2 hour rated, solid reinforced concrete floor assembly made from either lightweight or normal weight concrete with a density of 100 – 150 pcf, with a min. thickness of 4-1/2 in. at the joint face under the cover. When a longitudinal recess (blockout) is required to contain an architectural joint system, contact surface between the joint face and fire barrier (dim. A) is not to be less than 2-1/2 in.

2. CERTIFIED MANUFACTURER: Construction Specialties, Inc.

CERTIFIED PRODUCT: FB-17 Fire Barrier

CERTIFIED MODELS:

2FB-17-6F9, 2FB-17-6L9, 2FB-17-8F12,
 2FB-17-8L12, 2FB-17-10F15, 2FB-17-10L15,
 2FB-17-12F18, 2FB-17-12L18, 2FB-17-14F21,
 2FB-17-14L21, 2FB-17-16F24, 2FB-17-16L24,
 2FB-17-18F27, 2FB-17-18L27, 2FB-17-20F30,
 2FB-17-20L30

JOINT TREATMENT: Fire barrier composed of 20 GA galvanized steel retainers, layered fabric, metallic and fibrous components, mechanically attached to the concrete floor assembly (Item 1). Install joint treatment in accordance with manufacturer’s installation instructions. See Table 1 for models and movement ranges.

A. Alternate method of attachment shown can be used on one side of joint treatment when lateral shear movement is required.

3. JOINT COVER: Min. 20 GA joint cover formed of aluminum, bronze, stainless steel, or galvanized steel.

(Not Shown): In conditions where the linear opening is enclosed within a chase wall or the floor joint system is non-load bearing, a joint cover consisting of a creased 2 mil stainless steel foil secured with 1 in. wide continuous galvanized steel washer strips along each side of the joint may be installed in lieu of the min. 20 GA joint cover.

4. FASTENERS:

A. Use min. 3/16 in. diameter concrete anchors spaced max. 18 in. on center (oc) to secure the joint treatment (Item 2) to the concrete floor assembly (Item 1) in accordance with manufacturer’s installation instructions.

B. Joint covers (Item 3) shall be anchored to concrete floor assembly (Item 1) with min. 3/16 in. diameter concrete anchors at max. 18 in. oc over length of joint in accordance with manufacturer’s installation instructions.