

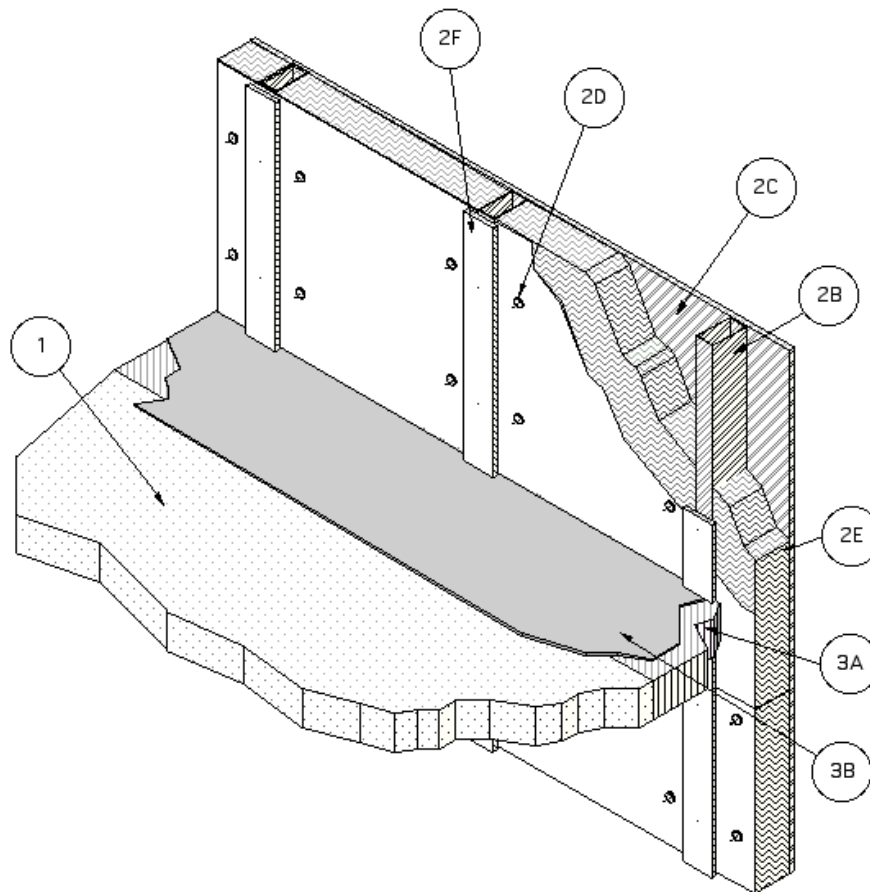
Design No. CEJ 208P

PERIMETER FIRE BARRIER SYSTEM

T-Rating - 3/4 hr.

F-Rating - 2 hr

Rated for $\pm 16.7\%$ movement



1. CONCRETE FLOOR ASSEMBLY: Two-hour rated concrete floor assembly made from either lightweight or normal weight concrete with a density of 100-150 pcf, with a min. thickness of 4-1/2-in. at the joint face. Overall slab thickness may vary to accommodate various blockout depths (longitudinal recesses) formed in the concrete, to house the architectural cover plate. The blockout width may also vary without restriction.
2. CURTAIN WALL ASSEMBLY: The curtain wall assembly shall incorporate the following construction features:
 - A. Mounting Attachment: (Not Shown)
Attachment of the curtain wall framing

to the structural framing shall be according to the curtain wall manufacturer's instructions. When required, the mounting attachments to the floor slab shall be connected to the joint face of the floor slab, according to the curtain wall manufacturer's instructions. Max. distance between mounting attachments shall be 10 feet.

- B. Aluminum Framing: Rectangular aluminum tubing mullions and transoms, sized according to the curtain wall system manufacturer's guidelines. Min. overall dimensions of framing required is 0.100 in. thick aluminum with a min. 6-1/2 in. height and a min. of 2-1/2 in. width of the

extrusion. Mullions are to be spaced a min. 60 in. o.c. and transoms are to be spaced a min. 72 in. o.c. Transoms are to be located at a height of 33 in. above the top surface of the concrete floor assembly (as measured from the bottom of the transom).

- C. Steel Panels: Steel panels shall be installed to curtain wall framing according to the curtain wall system manufacturer's guidelines. Use a min. 20 GA sheet steel panel with max. dimensions of 60 in. by 72 in.
- D. Impaling Pins: When used with insulation and framing covers, the pins (aluminum for framing attachments and steel for panel attachments) shall be located, sized and installed according to the curtain wall system manufacturer's guidelines, or be a min. 4-1/2 in. long 12 GA pin attached to or nom. 2 in. by 2 in. plate, a nom. 2 by 2 by 2 in. long angle, and can be directly attached to the framing and panels using a stud gun. Pins shall be spaced a max. of 12 in. o.c. and installed around the periphery (min.) so that the interior face of the curtain wall insulation is flush with the interior face of the framing.
- E. Curtain Wall Insulation: Use a nom. 4 in. 4 pcf mineral wool batt insulation** faced on one side with aluminum foil scrim (vapor retarder) which is exposed to the room interior. (** Listed with Omega Point Laboratories) In lieu of filling the full depth of the stud cavity with 4 pcf mineral wool, the use of nom. 2 in. 8 pcf mineral wool is allowed. Locate a support angle (3D) at the horizontal centerline of the perimeter joint protection installed between the concrete floor assembly (1) and the panels (2C). Then butt the insulation to each side of the support angle. All other horizontal seams in the insulation are to be at least 6 in. from the top surface of the perimeter joint treatment. Fit batts tightly between vertical and horizontal framing and secure with screws placed a max. 8 in. o.c. Install the batts flush with the interior face of the curtain wall framing. Install the min. 24-in. wide batts without vertical seams. Fill the spandrel panel area completely. When "C"-shaped studs are used, fill the cavity of all "C"-shaped studs with batt

insulation. All meeting edges of insulation are sealed with nom. 4-in. wide pressure sensitive aluminum foil faced tape centered over the junction so that approx. 2 in. of tape covers each edge of the adjacent insulation.

- F. Framing Covers: Strips made of min. 1 in. thick by 4 in. wide, 8 pcf, mineral wool batt insulation** faced on one side with aluminum foil scrim (vapor retarder) which is exposed to the room interior. (** Listed with Omega Point Laboratories) Framing covers are centered over each vertical framing member and secured to the member with impaling pins and clips spaced at least 12 in. o.c. and attached in accord with 2D. Framing covers do not pass through the perimeter joint treatment. They are butted to the top and bottom surfaces of the perimeter joint treatment.
3. PERIMETER JOINT PROTECTION: The perimeter joint (linear opening) shall not exceed an 8 in. nom. joint width (joint width at installation) and the perimeter joint treatment shall incorporate the following construction features:
- A. Packing Material: Use a min. 4 in. thick, 4 pcf density, mineral wool batt insulation** installed with the fibers running parallel to the slab edge and curtain wall. (** Listed with Omega Point Laboratories) The packing material shall be compressed 33.34% in the nominal joint width. Compress the batt insulation into the perimeter joint such that the top surface of the batt insulation is flush with the top surface of the concrete floor slab. Splices (butt joints) in the lengths of mineral wool batt insulation are to be tightly compressed together. Reference the Introduction to Fire Resistive Joint Systems Section of this Directory for more details on how to determine the cut width of the insulation to be installed in the nominal joint width, and how to determine the compressed percentage of a known insulation width installed in a known nominal joint width.
 - B. Fill, Void or Cavity Material: Liquid is to be applied, (sprayed, brushed, or painted) to cover the exposed surface of the mineral wool installed in the perimeter joint. Apply a min. dry film thickness of

Fire-Resistant Joint Systems

1/16 in. and overlap the material a min. 1/2 in. onto the adjacent curtain wall assembly and concrete floor slab assembly. If the spraying process is stopped and the applied liquid cures to an elastomeric film before process is restarted, then overlap the edge of the cured material at least 1/8 in. with the spray. Reference Product Section of this Directory for more details about the Listed product.

Listed Manufacturer:

Johns Manville --

Joint Sealant

Spray

Johns Manville Firetemp SE

Johns Manville Firetemp SI

C. Support Clips: (Not Shown) Required when using 24 GA Support Angle (3D), use standard Z-shaped clips that are min. 20 GA galvanized steel with the following nom. dimensions: 1 in. wide by 3 in. high with a 2 in. upper leg and 3 in. lower leg.

D. Support Angle: (Not Shown) Install a min. 1.5 in. x 1.5 in. 24 GA steel angle mechanically fastened to the interior of the steel panels at the mid point location of the packing material. When 16 GA support angles are used Z-clips (3C) are not required.

** Cycling: Before testing, the spliced, test specimen was cycled 500 times at 30 cpm in accordance with ICBO ES AC 30 (Jan. 1997) and ASTM E 1966.