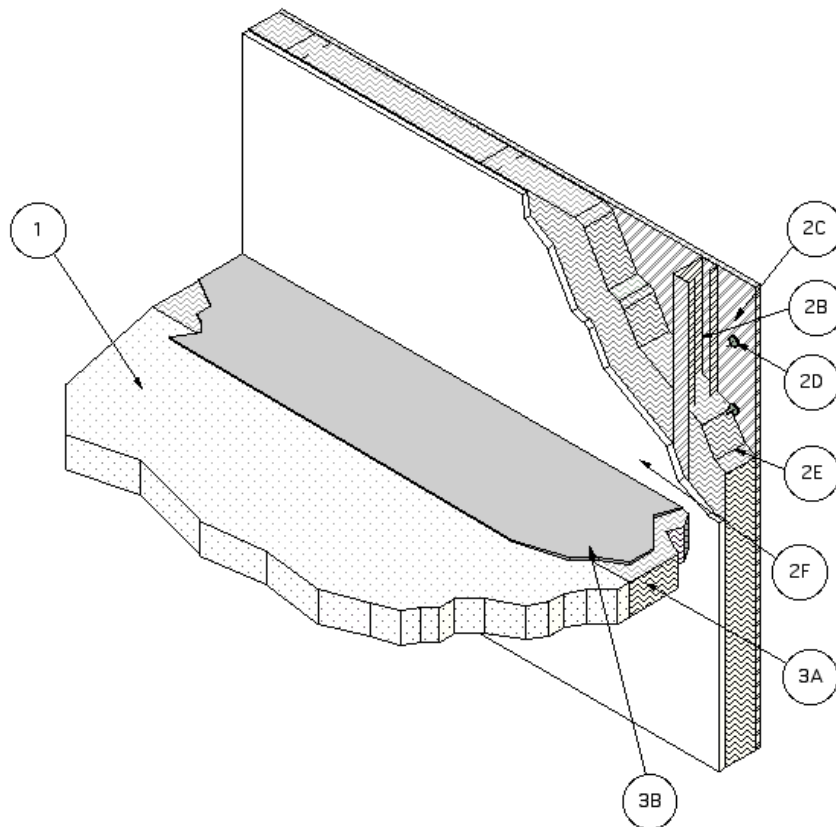

Design No. CEJ 212P

PERIMETER FIRE BARRIER SYSTEM

T-Rating - 3/4 hr.

F-Rating - 2 hr

Rated for $\pm 16.7\%$ movement



1. **CONCRETE FLOOR ASSEMBLY:** Two-hour rated concrete floor assembly made from either lightweight or normal weight concrete with a density of 100-150 pcf, with a min. thickness of 4-1/2-in. at the joint face. Overall slab thickness may vary to accommodate various blockout depths (longitudinal recesses) formed in the concrete, to house the architectural cover plate. The blockout width may also vary without restriction.
2. **CURTAIN WALL ASSEMBLY:** The curtain wall assembly shall incorporate the following construction features:
 - A. **Mounting Attachment:** (Not Shown)
Attachment of the curtain wall framing to the structural framing shall be according to the curtain wall manufacturer's instructions. When required, the mounting attachments to the floor slab shall be connected to the joint face of the floor slab, according to the curtain wall manufacturer's instructions. Max. distance between mounting attachments shall be 10 feet.
 - B. **Steel-Stud Framing:** Vertical framing members shall be min. 5-1/2 in. by 1-5/8 in., 18 GA steel "C" studs. Attachment shall be according to the curtain wall system manufacturer's guidelines. Vertical framing not to exceed a spacing of 48 in. o.c. Horizontal framing members not to exceed 72 in. o.c. Transoms are to be located at a height of 33 in. above the top surface of the concrete floor assembly (as

- measured from the bottom of the transom).
- C. Glass Panels: Glass spandrel panels shall be installed to curtain wall framing according to the curtain wall system manufacturer's guidelines. Use a min. 1/4 in. thick, clear tempered glass with a max. width of 59 in. and height of 71 in. Panels are secured with a thermal break (thermoset rubber extrusion), pressure bar, 1/4-20 x 5/8 in. long screws, and a snap face. The spandrel panels shall be insulated according to 2E.
 - D. Interior Curtain Wall Surface: Framing covered with one layer of 5/8 in. thick, Type X gypsum wallboard on interior face. The face layer of gypsum wallboard fastened to steel studs with min. #6 x 1-1/8 in. long bugle-head phillips drywall screws spaced 12 in. o.c. Joint Tape and Compound - vinyl or casein, dry or premixed joint compound applied to face layers of gypsum wallboard in two coats to all exposed screw heads and gypsum wallboard joints. A min. 2-in. wide paper, plastic or fiberglass tape embedded in first layer of compound over joints in gypsum wallboard. A min. wall cavity depth of 3-5/8 in. created from unexposed side of gypsum wallboard to unexposed side of panel. The joint face of the curtain wall covered as shown with one layer of gypsum wallboard.
 - E. Curtain Wall Insulation: Use a nom. 4 in. 4 pcf mineral wool batt insulation** with or without aluminum foil scrim. (** Listed with Omega Point Laboratories) In lieu of filling the full depth of the stud cavity with 4 pcf mineral wool, the use of nom. 2 in. 8 pcf mineral wool is allowed. Attach a min. 16 GA angle around the entire perimeter of each batt. The vertical 16 GA angles are attached to the mullions with screws. At the horizontal butt joints of the insulation in the field of the glass spandrel panels (2C), the horizontal angles are placed back to back to form a "T", the first of which is located at the horizontal centerline of the perimeter joint protection (3), which is installed between the concrete floor assembly (1) and the panels (2C). All other horizontal seams in the insulation are to be at least 6 in. from the top surface of the perimeter joint treatment. Fit batts tightly between vertical and horizontal angles and secure with screws placed a max. 8 in. o.c. Install the batts flush with the interior face of the curtain wall framing. Install the min. 24-in. wide batts without vertical seams. Fill the spandrel panel area completely. Fill the cavity of all "C"-shaped studs with batt insulation.
 - F. Impaling Pins: (Not Shown) When used with insulation and framing covers, the pins shall be located, sized and installed according to the curtain wall system manufacturer's guidelines, or be a min. 4-1/2 in. long, 12 GA steel pin attached to a nom. 2 in. by 2 in. galvanized sheet steel plate or a nom. 2 by 2 by 2 in. long angle using a stud gun. Pins shall be spaced a max. of 12 in. o.c. and installed around the periphery (min.) so that the interior face of the curtain wall insulation is flush with the interior face of the framing.
3. PERIMETER JOINT PROTECTION: The perimeter joint (linear opening) shall not exceed an 8 in. nom. joint width (joint width at installation) and the perimeter joint treatment shall incorporate the following construction features:
- A. Packing Material: Use a min. 4 in. thick, 4 pcf density, mineral wool batt insulation** installed with the fibers running parallel to the slab edge and curtain wall. (** Listed with Omega Point Laboratories) The packing material shall be compressed 50% in the nominal joint width. Compress the batt insulation into the perimeter joint such that the top surface of the batt insulation is flush with the top surface of the concrete floor slab. Splices (butt joints) in the lengths of mineral wool batt insulation are to be tightly compressed together. Reference the Introduction to Fire Resistive Joint Systems Section of this Directory for more details on how to determine the cut width of the insulation to be installed in the nominal joint width, and how to determine the compressed percentage of a known insulation width installed in a known nominal joint width.
 - B. Fill, Void or Cavity Material: Liquid is to be applied, (sprayed, brushed, or painted) to cover the exposed surface of the mineral wool installed in the perimeter

joint. Apply a min. dry film thickness of 1/16 in. and overlap the material a min. 1/2 in. onto the adjacent curtain wall assembly and concrete floor slab assembly. If the spraying process is stopped and the applied liquid cures to an elastomeric film before process is restarted, then overlap the edge of the cured material at least 1/8 in. with the spray.

Listed Manufacturer:

Johns Manville --

Joint Sealant

Spray

Johns Manville Firetemp SE

Johns Manville Firetemp SI

C. Support Clips: (Not Shown) Required when using 24 GA Support Angle (3D), use standard Z-shaped clips that are min. 20 GA galvanized steel with the following nom. dimensions: 1 in. wide by 3 in. high with a 2 in. upper leg and 3 in. lower leg.

D. Support Angle: (Not Shown) Install a min. 1.5 in. x 1.5 in. 24 GA steel angle mechanically fastened to the interior of the studs at the mid point location of the packing material. When 16 GA support angles are used Z-clips (3C) are not required.

** Cycling: Before testing, the spliced, test specimen was cycled 500 times at 30 cpm in accordance with ICBO ES AC 30 (Jan. 1997) and ASTM E 1966.