

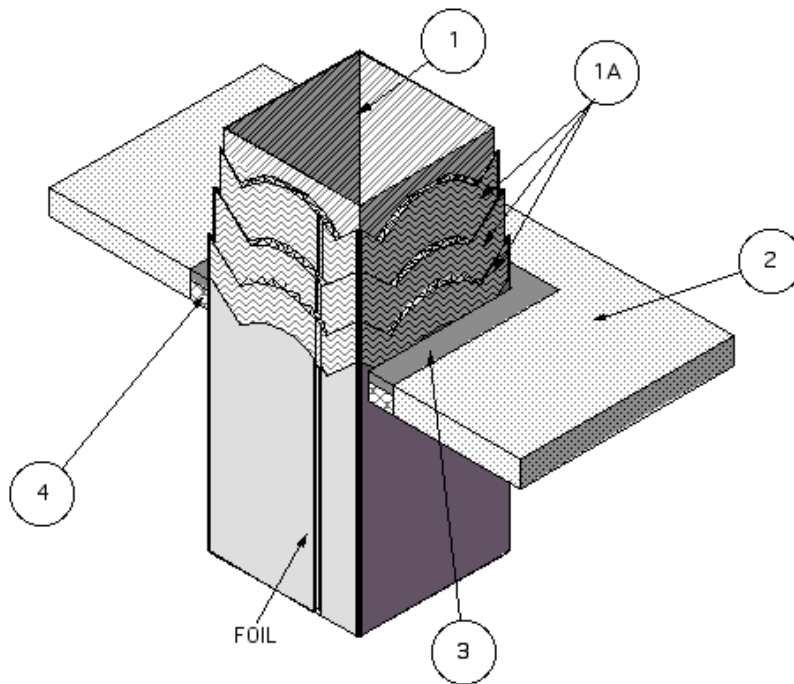
Design No. FS 542 F

**FIRE PENETRATION SEAL**

**Penetrating Item Grease Duct**

**T-Rating - 2 hr**

**F-Rating - 2 hr**



1. PENETRATING ITEM: 16 GA continuously-welded, liquidtight grease duct system, with both horizontal and vertical shafts permitted, constructed of sheet steel with outside dimensions of max. 24-in. wide x max. 24-in. high, and protected as detailed in Design GD 504 F. 32-in. square penetration opening in floor/ceiling assembly.
2. FLOOR/CEILING ASSEMBLY: The two-hour fire-rated floor/ceiling assembly shall consist of min. 4-1/2 in. thick normal weight (100-150 pcf) reinforced concrete.
3. FILL, VOID OR CAVITY MATERIAL: Min. 1/2 in. depth of sealant fill material is to be applied to the recess around the top surface of the floor through-penetration opening.

**Listed Manufacturer:**

**Johns Manville Corporation**

Firestopping

Firestopping Sealant

Firetemp™ SI

4. PACKING MATERIAL: Use three pieces of min. 1-1/2-in. thick Firetemp™ Wrap to fill, tightly and permanently pack, a nom. 4 in. depth of the annular space, a nominally 1-1/4" to 1-3/4" wide gap, around the penetrating item. The bottom piece of Firetemp™ Wrap is folded into a "U" shape before being installed. Surface of packing material is to be recessed a min. 1-2 in. from the top surface of the floor or both surfaces of the wall assembly, as

required to accommodate the necessary depth of caulk fill material.

**Listed Manufacturer:**

Johns Manville Corporation

Applied Fireproofing

Ceramic Blanket

Firetemp™ Wrap