

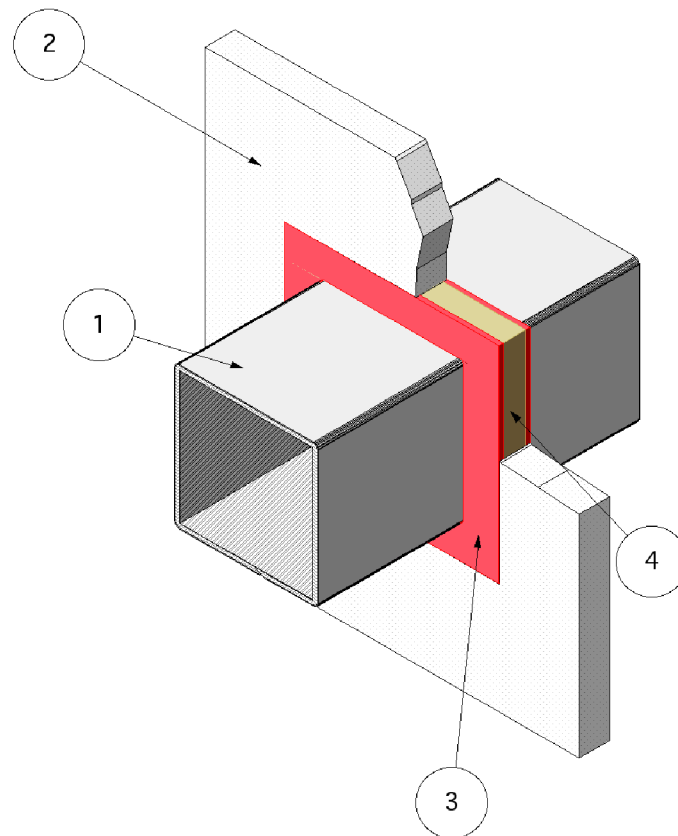
Design No. FS 550 W

FIRE PENETRATION SEAL

Penetrating Item Steel Duct

ISO 6944

Integrity, Stability, Insulation - 2 hr



1. **PENETRATING ITEM:** An liquidtight duct system with horizontal shafts constructed of min. 22 GA (0.028 in.) sheet steel with max. 1296-in. area and max. 54-in. width (max. dim. 24-in. x max. 54-in.) and as detailed in Design GD 518 F.
2. **WALL ASSEMBLY:** The two-hour fire-rated wall assembly consists of min. 4-1/2 in. thick normal weight (100-150 pcf) reinforced concrete or concrete blocks. Create an opening in the wall assembly measuring max. 32 high x 54-in. wide. Position the duct assembly eccentrically in the opening so that the annular space ranges from min. 3/4in. on one side to max. 3 in. on the other.
3. **FILL, VOID OR CAVITY MATERIAL:** Min. 1/4-in. depth of sealant fill material is to be applied over the recessed forming material (4) on both sides of the wall through-penetrating opening. The sealant material overlapped the concrete and the insulation on the duct nom. 1/2-in.

Listed Manufacturer:

Johns Manville Corporation

Firestopping

Firestopping Sealant

Firetemp® SI

Firetemp® SE

Through-Penetration Fire Stop Systems

Firetemp® CI

4. **PACKING MATERIAL:** Fill the annular space with leftover 1-1/2 in. thick, 8pcf ceramic fiber blanket. Cut the blanket into 9-in strips. Then fold the blanket into a "U" shape and compress it approximately 37% and insert it into the opening to fill the entire annular space. Recess the surface of packing material a min. 1/4 in. from the top surface of

the floor, as required to accommodate the necessary depth of caulk fill material.

Listed Manufacturer:

Johns Manville Corporation

Applied Fireproofing

Ceramic Blanket

Firetemp® Wrap