
Design No. FS 564 W

FIRE PENETRATION SEAL (Ventilation Duct)

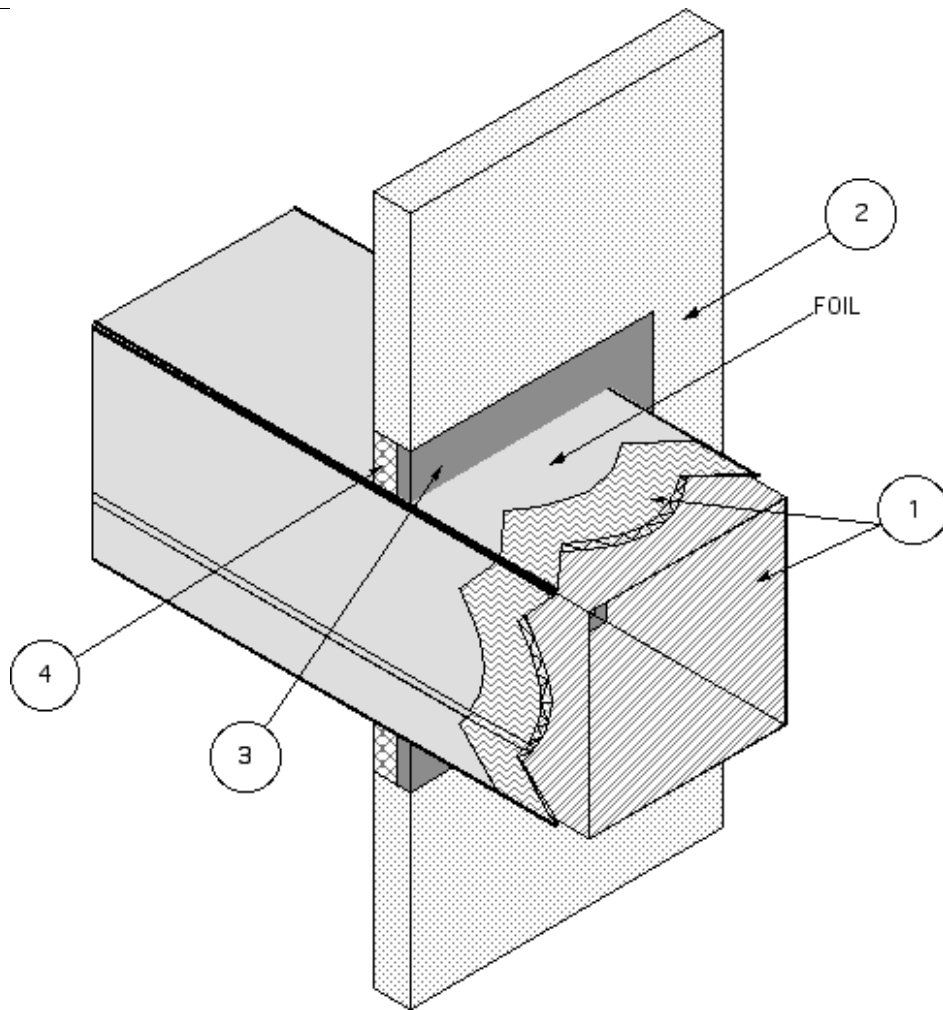
ISO 6944

Integrity ,Stability, Insulation - 1 hr (Wall)

ASTM E 814

F-Rating - 1 hr (Wall or Floor)

T-Rating - 1 hr (Wall or Floor)



1. PENETRATING ITEM: An airtight insulated duct system with horizontal shafts constructed of min. 22 GA (0.028 in.) sheet steel with max. 1296 in² area and max. 54-in. width (max. dim. 24-in. x max. 54-in.) and as detailed in Design VAD 528 F passing through the assembly (2).
2. ASSEMBLY: The one-hour fire-rated wall/floor assembly consists of min. 4-1/2 in. thick normal weight (100-150 pcf) reinforced concrete or concrete blocks. Create an opening in the assembly measuring max. 29 high x 61-in. wide. Position the duct assembly concentrically or eccentrically in the opening so that the annular space ranges from min. 1 in. on one side to max. 2-3/4 in. on the other.
3. FILL, VOID OR CAVITY MATERIAL: Min. 1/4-in. depth of sealant fill material is to be applied to the recess around the surface of the assembly (2) through-penetration opening.

Through-Penetration Fire Stop Systems

The sealant material overlapped the concrete and the insulation on the duct nom. 1/2-in.

Listed Manufacturer:

Johns Manville Corporation -

Firestopping

Firestopping Sealant

Firetemp® SI

Firetemp® SE

Firetemp® CI

4. PACKING MATERIAL: Fill the annular space with leftover 1-1/2 in. thick, 8pcf

ceramic fiber blanket. Cut the blanket into 9-in strips. Then fold the blanket into a "U" shape and compress it approximately 37% and insert it into the opening to fill the entire annular space. Recess the surface of packing material a min. 1/4 in. from the top surface of the floor, as required to accommodate the necessary depth of caulk fill material.

Listed Manufacturer:

Johns Manville Corporation -

Applied Fireproofing

Ceramic Blanket

Firetemp® Wrap