

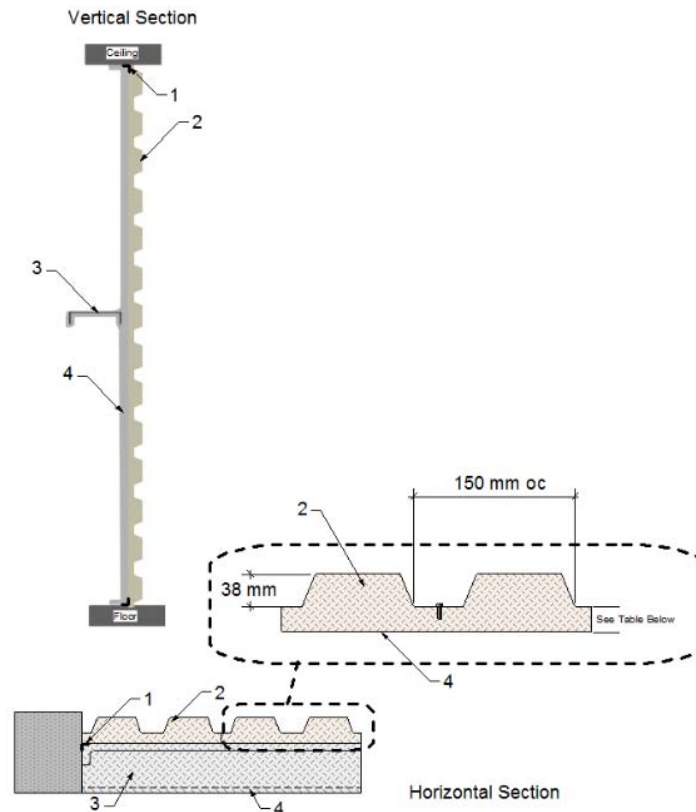
**Design Number : CCI/MFF 120-01****CCI MANUFACTURING INC.**

CAN / ULC S101

Fire Rating Only - Load Rating Not Within The Scope Of This Listing

**(Exposed to Fire on Interior Side Only)**

Assembly Rating – up to 2 hour



1. **SUPPORT ANGLES:** Cold rolled steel angles 75 mm x 75 mm x 6 mm across the top and bottom of the wall, and a 55 mm x 55 mm x 6 mm thick angle at each side. Angles attached to masonry with 60 mm long 9.5 mm dia. steel bolts, or steel or cast iron expansion shells spaced 600m on center (oc).
2. **WALL AND PARTITION FACING UNITS:** 0.67 mm thick galvanized sheet steel facing units with 38 mm deep flutes 150 mm oc. Panels fastened with No. 14 - 19 mm self tapping screws.
3. **STEEL CHANNEL:** (Optional) cold rolled channel c200x17, where required, welded to 100 mm x 100 mm 6 mm angles. Angles attached to masonry with two 60 mm long, 9.5 mm dia steel bolts, or studs and steel or cast iron expansion shells.
4. **SPRAY FIBRE:** Designated as HiBAR™ applied to interior face of

wall to minimum thickness and densities indicated in the below table. Steel surface must be clean and free of dirt, loose scale and oily deposits.

Assembly Rating (h)	Hibar Minimum Thickness (mm)		Minimum Density (kg/m <sup>3</sup> )	
	Applied as Facing	Applied over Channel	Average	Individual
1	38	48	245	205
2	86	61	179	171