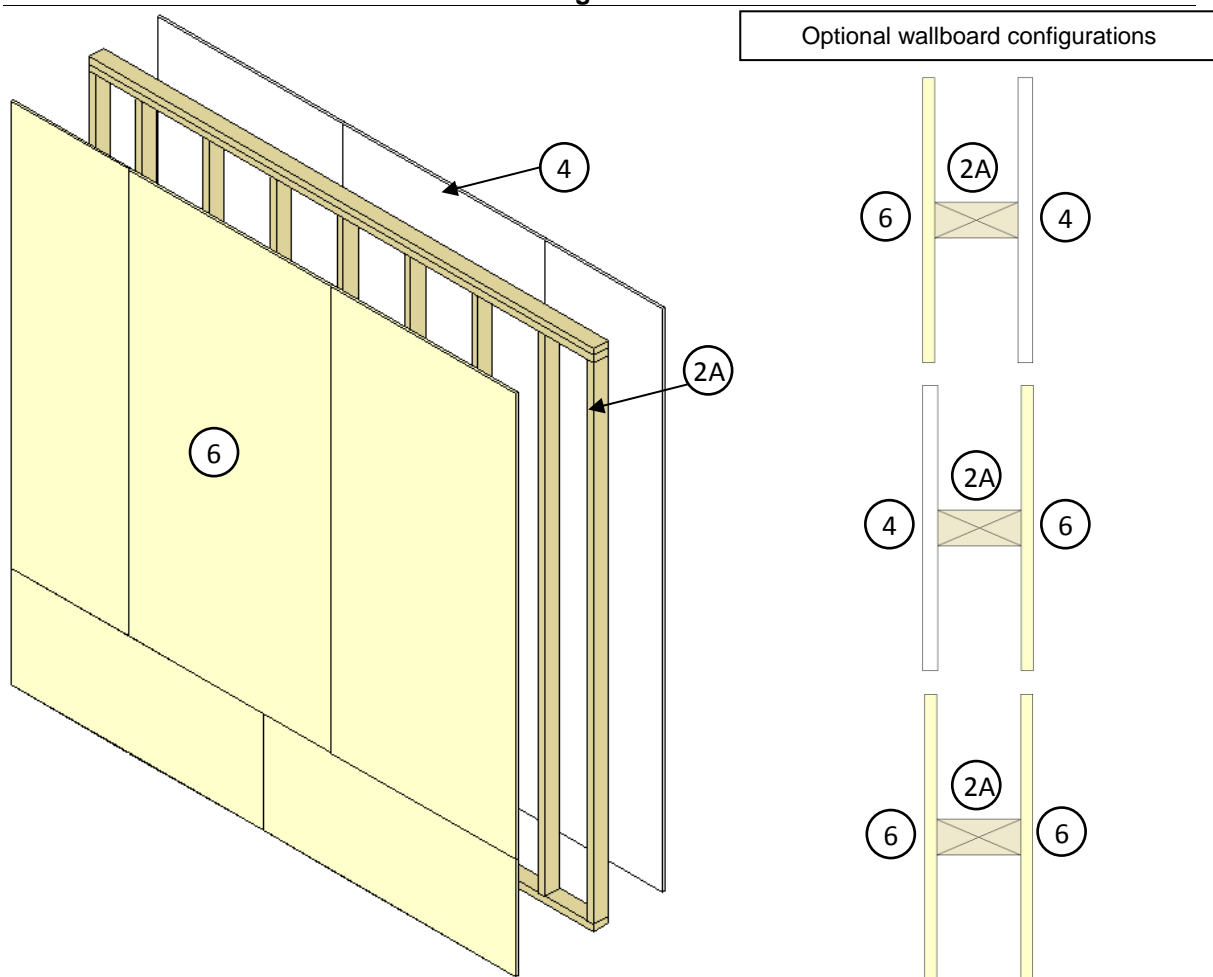


Jet Products, LLC  
Design No. JPL/GFRCP 60-01  
Non-Load-Bearing Wall System  
Jet Products 1 Hour Fire Rated Wall System  
ASTM E119  
Rating: 1 Hour



**1. EXTERIOR NON-LOAD-BEARING WALL ASSEMBLY:** Incorporate construction features in the exterior non-load-bearing wall assembly as described in Items 1 through 7.

**2. STRUCTURAL MEMBERS:** Use either wood or steel structural members with the following installation specifications:

A. **WOOD STUDS** – Install min 2 x 4 in. wood stud members spaced max 16 in. on center (oc) with two 2 x 4 in. top plates and one 2 x 4 in. bottom plate. In lieu of 2 x 4 in. members, 2 x 6 in. members may be used at a max. spacing of 16 in. oc with

two 2 x 6 in. top plates and one 2 x 6 in. bottom plate. Studs should be effectively fire stopped. All lumber section dimensions are nominal values.

B. **STEEL STUDS** (Not shown) – In lieu of Item 2A, install min 3-1/2 in. deep, min No. 20 MSG corrosion protected steel structural members, spaced max 16 in. oc. Attach studs to floor and ceiling tracks with 1/2 in. long, Type S-12, steel screws to both sides of the stud, or use welded connections or bolted connections according to AISI design specifications.

C. STEEL FLOOR AND CEILING TRACKS  
(For use with Item 2B; Not Shown) –  
Install min 3-1/2 in. deep, min No. 20 MSG  
corrosion protected steel structural  
members to floor and ceiling assemblies  
with appropriate fasteners and methods at  
a max spacing of 24 in. oc.

3. **LATERAL BRACING (Not Shown):** Where  
required by the design of a specified steel  
stud wall to provide lateral support of studs,  
support may be provided by means of steel  
straps, channels, or other similar means.

4. **GYPSUM BOARD:** In assemblies that  
require gypsum wall board, apply one layer of  
5/8 in. thick, Type X, gypsum board using 1-  
1/4 in. long, No. 6, Type S screws, spaced  
nominally 8 in. and 12 in. oc in the perimeter  
and field, respectively, for wood structural  
members. For steel structural members, use  
1-1/4 in long, Type S self-drilling screws,  
spaced as described above. Apply a Level 2  
finish of vinyl or casein, dry or premixed joint  
compound as follows. Apply to gypsum  
board in two coats to all exposed fastener  
heads and gypsum board joints. Embed min  
2 in. wide paper, plastic, or fiberglass tape in  
first layer of compound over joints in gypsum  
board.

5. **BATTS AND BLANKETS (Not Shown):**  
Install nominal 4 in. thick, min 3 pcf unfaced  
mineral fiber insulation into the wall cavity  
between the structural members (Item 2). In  
the case that 2 x 6 in. wood members are  
used, use nominal 6 in. thick, min 3 pcf  
unfaced mineral fiber insulation pressure  
fitted in the wall cavity.

6. **CERTIFIED COMPANY:** Jet Products, LLC.

**CERTIFIED PRODUCT:** 1/2 in. Jet Board  
Structural Fireboard

**JET BOARD:** Install min 1/2 in. Jet Board  
Structural Fireboard using No. 8 x 2 in.  
coated fasteners, spaced 6 in. and 12 in. oc  
along the perimeter and in the field,  
respectively, for wood structural members.  
For Steel structural members, use min No. 8  
x 2 in., coated self-drilling screws spaced as  
described above. Apply a Level 2 finish at all

joints and fasteners using a cementitious joint  
compound. Apply to Jet Board in two coats  
to all exposed fastener heads and joints,  
embedding min 2 in. wide fiberglass tape in  
first layer of compound over joints in Jet  
Board.

7. **EXTERIOR VENEERS (Optional):** The  
following exterior facings are to be installed in  
accordance with the manufacturer's  
installation instructions:

A. Brick – Brick veneer, meeting  
requirements of authorities having  
jurisdiction, installed in accordance with  
the manufacturer's installation  
specifications

B. Wood Siding Panels – 5/16 in. min thick  
lumber, plywood, or OSB wood based  
siding

C. Wood Lap Siding – 5/16 in. min thick  
lumber, plywood or OSB wood based  
siding

D. Hardboard Panel Siding – 1/4 in. min thick  
hardboard based siding

E. Hardboard Lap Siding – 1/4 in. min thick  
hardboard based siding

F. Fiber Cement Panel Siding – 1/4 in. min  
thick fiber-cement based siding

G. Fiber Cement Lap Siding – 1/4 in. min  
thick fiber-cement based siding

H. Cementitious or Synthetic Stucco –  
Portland cement or synthetic stucco  
system, meeting requirements of authority  
having jurisdiction, installed with metal lath  
or adhesive base coat, in accordance with  
manufacturer's installation instructions

I. Vinyl Siding – 0.035 in. min thick vinyl,  
exterior plastic siding, installed in  
accordance to manufacturer's instructions