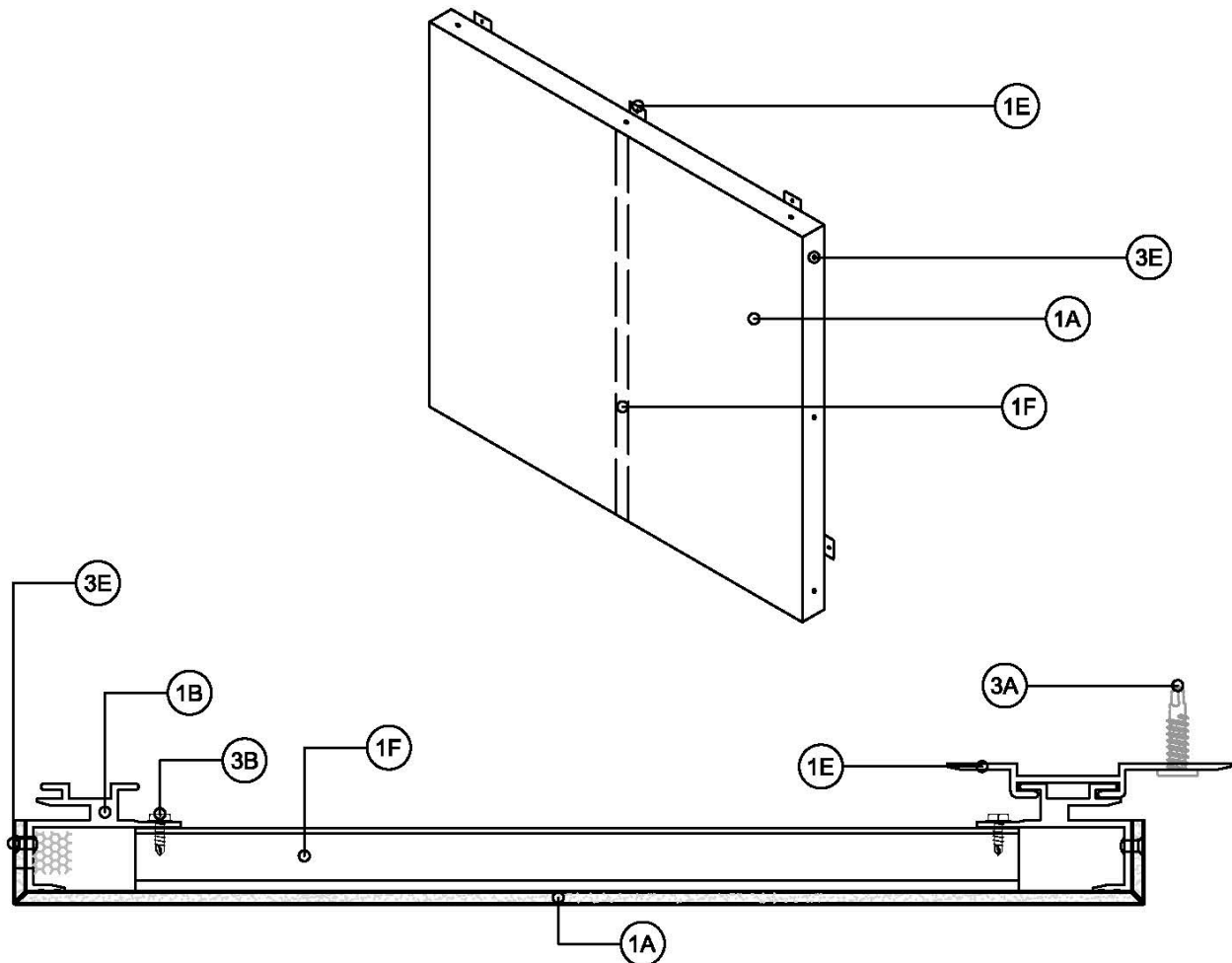


**ACS Composite Systems Inc.**  
**Design No. ACS/MCMWP 25-01**  
**Exterior Wall Systems**  
**ACP Systems-1**  
**CAN/ULC-S134**  
**Rating: Pass**



**Figure 1: General Assembly**

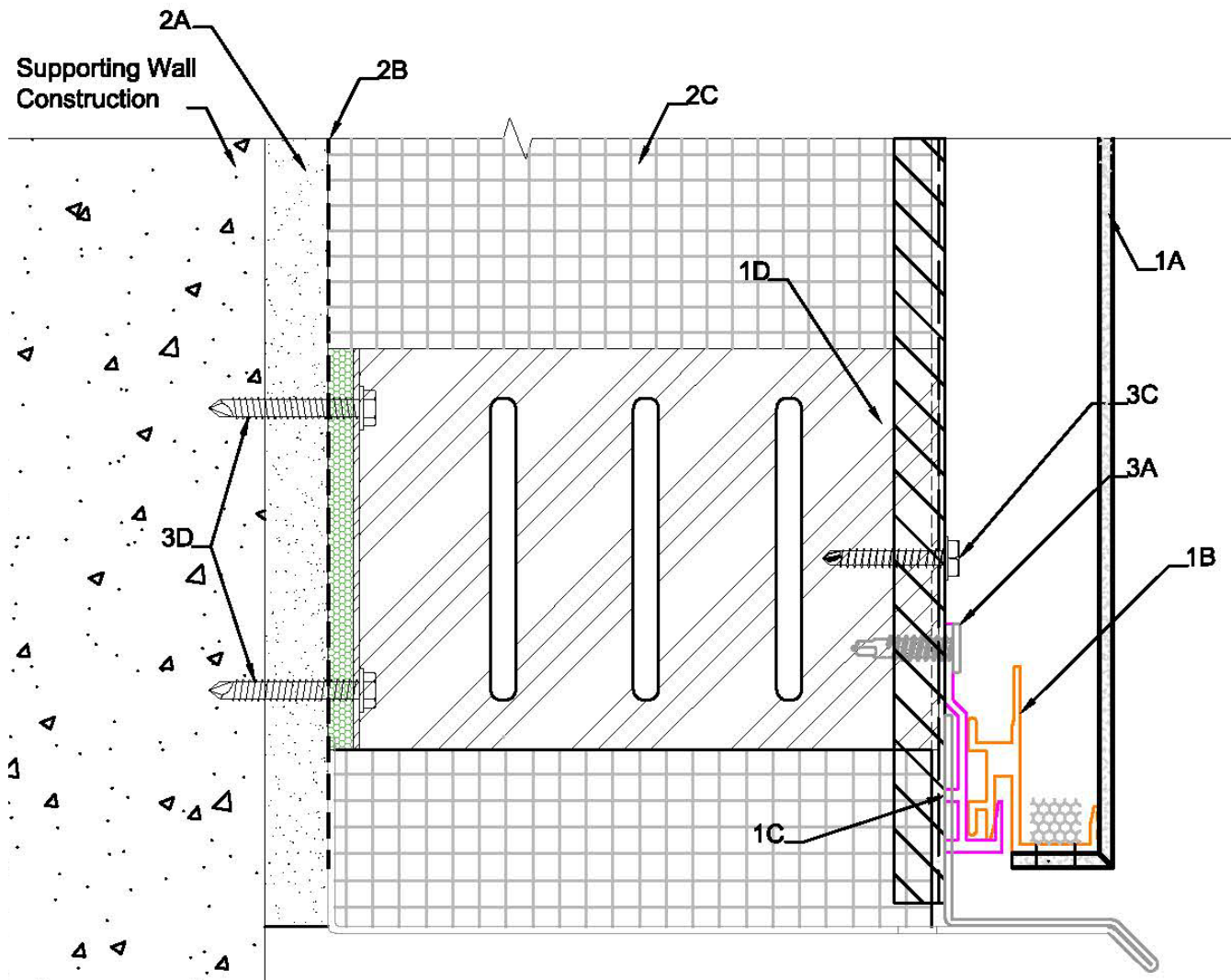


Figure 2: Starter Detail

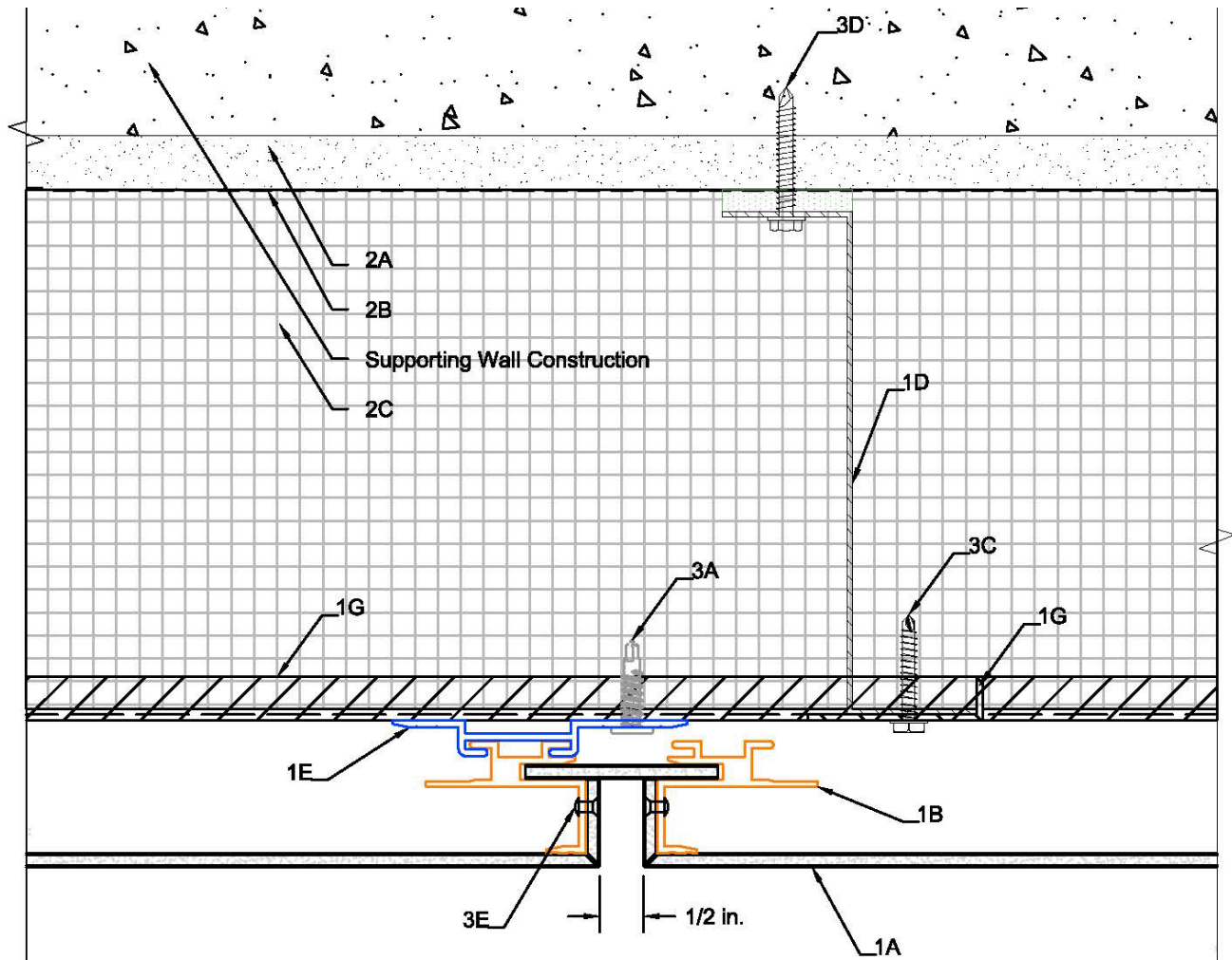


Figure 3: Joint Detail

1. **CERTIFIED MANUFACTURER:** ACS Composite Systems Inc.

**CERTIFIED PRODUCT:** Exterior Wall System

**CERTIFIED MODEL:** ACP Systems-1

EXTERIOR WALL SYSTEM – Reference Figures 1 through 3. Items 1A through 1G described herein represent the components of construction, other than those of the supporting wall construction (Item 2), as tested or evaluated to the standardized test conditions of the referenced standard.

Install the ACS Composite Systems Inc., ACP Systems-1 onto the supporting wall construction (Item 2) in accordance with the manufacturer's installation instructions and in accordance with the following requirements:

A. **CERTIFIED MANUFACTURER:** Sistemas Técnicos del Accesorio y Componentes, S.A.

**CERTIFIED PRODUCT:** Aluminum Composite Panel

**CERTIFIED MODEL:** STACBOND® FR , 4 mm thick



- B. S1 FRAME** – Install ACS S1 Frame using min. No. 10 x 3/4 in. screws (Item 3B).
- C. S1 STARTER** – Install ACS S1 Starter using min. No. 10 x 3/4 in. screws (Item 3A) to ACS S-Clip (Item 1D).
- D. S-CLIP** – Install ACS S-Clip using min. 1/4 x 2-1/2 in. concrete fasteners (Item 3D) through gypsum board (Item 2B) into the supporting wall construction.
- E. S1 STANDARD CLIP** – Install S1 Standard Clip to S1 Stiffener (Item 1F) assembly using min. #10 x 1/2 in. long screws (Item 3B); opposing leg of S1 Standard Clip installed into the 16 GA, 1/2 x 2 in. vertical angle (Item 1G) using min. #10 x 3/4 in. long screws (Item 3A).
- F. S1 STIFFENER** – S1 Stiffener is factory pre-installed onto Aluminum Composite Panel (Item 1A).
- G. VERTICAL ANGLES** – Install 16 GA, 1/2 x 2 in. vertical angles to ACS S-Clips (Item 1D) using #12 x 3/4 in. stainless steel screws (Items 3C).

**2. SUPPORTING WALL CONSTRUCTION:** The supporting wall construction to be constructed per the applicable Building Code, and per the following provisions of this Design Listing.

- A. EXTERIOR SHEATHING** – Install 5/8 in. Type X gypsum exterior sheathing onto supporting construction using min. 1/4 x 2-1/2 in. concrete fasteners; fasteners are applied per Code requirements.
- B. AIR BARRIER** – Install SOPREMA SOPRASEAL® STICK VP to the exterior surface of exterior sheathing (Item 2A) per manufacturer's installation instructions.
- C. INSULATION** – Friction fit nominal 6 in. thick Rockwool CAVITYROCK® dual density, nominal 6.2 pcf outer layer and nominal 3.8 pcf inner layer, insulation between ACS S-Clips (Item 1D).

**3. FASTENERS:** The following fasteners were used for the installation of the listed assembly.

- #10 x 3/4 in. long DT2000 coated screw
- #10 x 1/2 in. long DT2000 coated screw
- #12 x 3/4 in. long stainless steel screw
- 1/4 x 2-1/2 in. concrete fasteners
- 1/8 in. rivet