

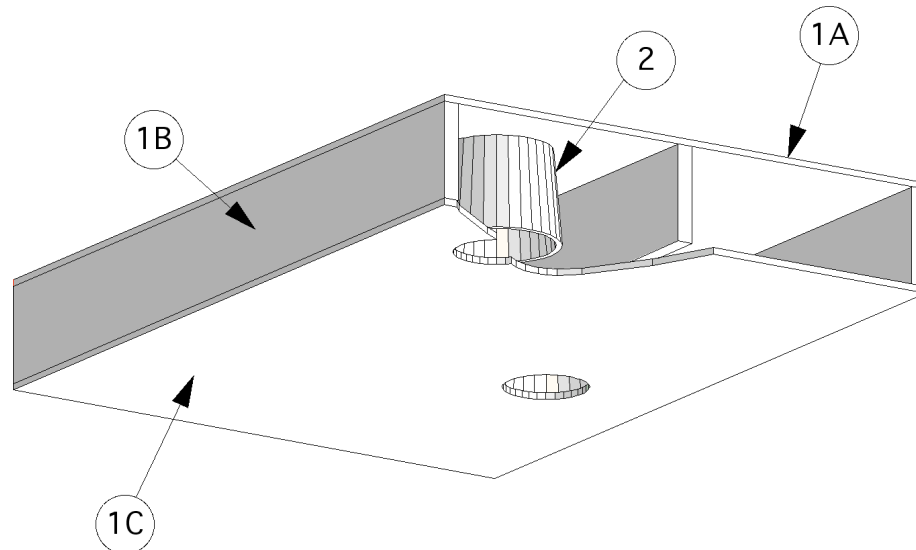
---

**Design No. LC 101**

**LUMINARY COVERS**

**F-Rating - 1 hr**

---



**1. FLOOR CEILING ASSEMBLY:**  
Constructed in the manner as specified below:

- A. Plywood subfloor: Min. 5/8 in. thick SYP plywood. Long dimension of panels, or face grain of plywood, to be perpendicular to joists (1B) with joints staggered. Plywood is secured to top side of joist assembly with min. No. 6, 1-7/8 in. long bugle-head drywall screws, spaced max. 16 in. OC. along joists.
- B. Lumber Joists: Parallel nom. 2 X 10, or deeper, lumber joists spaced a min. 16 in. o.c. and a max. of 24 in. OC.
- C. Gypsum Wallboard: Nom. 5/8 in. Type X gypsum wallboard is secured to the underside of the lumber joists (1B) with min. No. 6, 1-7/8 in. long bugle-head drywall screws, spaced max. 6 in. OC. along perimeter and on joists in the field. Apply vinyl or casein, dry or premixed joint compound to face layers of gypsum wallboard in two coats to all exposed fastener heads and gypsum wallboard joints. A min. 2 in. wide paper, plastic, or fiberglass tape is

embedded in first layer of compound over joints in gypsum wallboard.

- 2. FIXTURE PROTECTION COVER:**  
Constructed of a proprietary high-temperature fiber matrix and having an intumescent feature. Two sizes of covers are recognized within this Listing. The smaller cover has a base diameter of 14-1/2 in. and an overall height of 9 in. The larger cover has a base diameter of 17 in. and an overall height of 11-1/4 in. Covers are centered over openings up to 8 in. in diameter that are cut into the gypsum ceiling for the purpose of installing a recessed fixture. The cover may be slit to fit over obstructions in order to allow the cover to fit flush to the gypsum wallboard. When this occurs, caution is to be used to not damage the cover. The covers may be installed in the floor with the following provisions:

- Max. 1 opening within 16 sq. ft. area.
- Min. o.c. fixture spacing of 40 in. within same truss cavity.
- Min. center-to-center fixture spacing of 40 in. for adjacent truss cavities.

## Luminary Covers

- A min. 1/4 in. gap space must be maintained between the top of the cover and the underside of the subfloor (1A).

### **Listed Manufacturer:**

Tenmat, Ltd.

Fibrous Fiber Safing

FF109 Intumescent Fixture Protection  
Cover

3. RECESSED FIXTURE: (Not Shown)  
Installed in accordance with manufacturer's instructions. The fixture can be installed in an opening having a max. diameter of 8 in. The fixture must be secured to the framing of the floor, and may not be supported by the gypsum wallboard. Electrical wiring leading to and from the fixture may penetrate the cover. When this occurs, caution is to be used to not damage the cover, and the wiring is to fit snugly through any opening.