



Intense Lighting, a Leviton Company
Design No. INT/LI 120-01
Floor/Ceiling Assembly
Recessed Luminaire
LC4 Series 4-in. Fundamentals™
CAN/ULC-S101
Fire Resistance Rating: 2 Hour

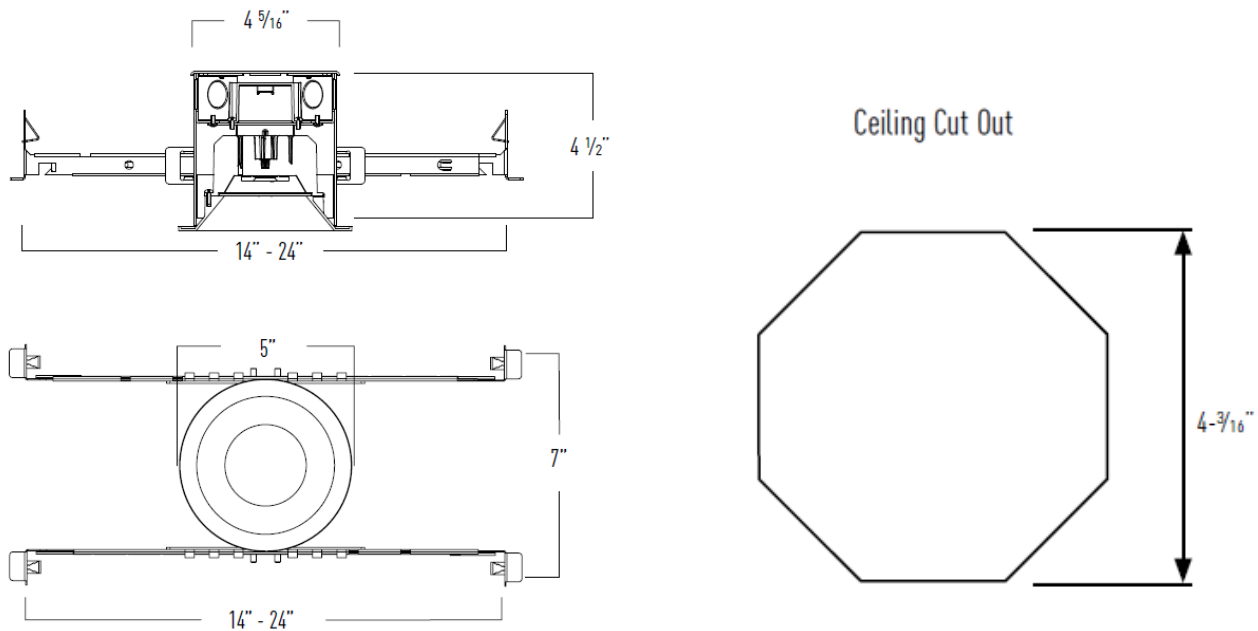


Figure 1. LC4 Series 4-in. Fundamentals™

- 1. HORIZONTAL ASSEMBLY:** Use a two hour fire-rated floor/ceiling assembly constructed in accordance with material and construction specifications of UL Design No. UL L505, L511, L536, or L541.
- 2. CERTIFIED MANUFACTURER:** Intense Lighting, a Leviton Company

CERTIFIED PRODUCT: Recessed Luminaire

CERTIFIED MODEL: LC4 Series 4 in. Fundamentals™

Approved for use with ETL-Certified LCT4 Series Trim.

Follow the manufacturer's installation instructions. Cut a 4-3/16 in. octagonal opening in the gypsum ceiling such that the annular space between the ceiling membrane and the box does not exceed 1/8 in. Install one unit per 25 square feet of ceiling area with a min. separation of 3 ft between units. Use the standard bar hanger configuration (see Figure 1) for ceiling membranes up to 1-1/2 in. deep. When required, rotate bar hangers 180° per manufacturer's installation instructions for ceiling membranes up to 2 in. deep.

Consult the listing report on the Directory of Building Products (<https://bpdirectory.intertek.com>) for the edition of the standard(s) evaluated