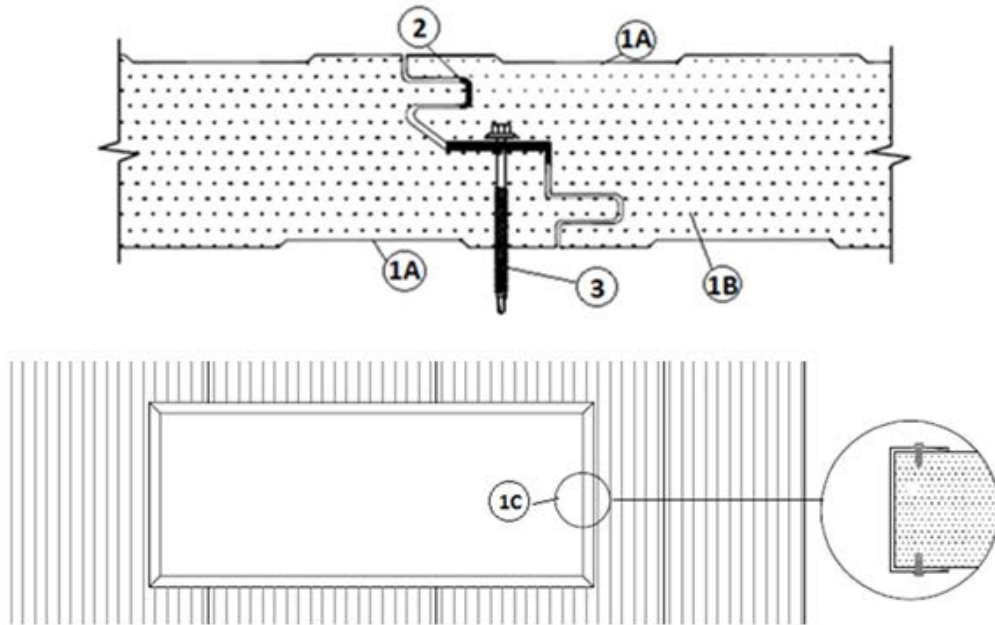


**Green Span Profiles LP**  
**Design No. GSP/CWP 30-01**  
**Insulated Wall Panel**  
**Non-Load Bearing Wall System**  
**NFPA 285**  
**Rating: Meets Conditions of Acceptance**



**1. CERTIFIED MANUFACTURER:** Green Span Profiles LP

**CERTIFIED PRODUCT:** Insulated Metal Wall Panel

**CERTIFIED MODELS:** Mesaline, Shadowline, Waveline, Cleanline, Impression, Stucco, and Infinity.

**INSULATED WALL PANELS:** Construct wall of panels measuring nominal 42 in. of coverage width and min. thickness of the insulated panels is 2 in. Max. approved thickness is 6 in. Install panels with the longitudinal (long dimension) edges placed vertically. Construct wall panels of the following materials:

- A. **PANEL FACING** – Construct interior and exterior faces of min. 26 GA Galvalume<sup>®</sup>, G90 galvanized or stainless steel. Panel faces are roll formed with a smooth (no profile) or embossed profile.
- B. **POLYISOCYANURATE FOAM CORE** – Fill hollow core between panel faces (Item 1A) with nominal 2.5 pcf density polyisocyanurate foam forming the male and female mating edges of the panels.
- C. **Trim open areas** with min. 26 GA. channel (width determined by panel thickness) and secure with 3/4 in. long, hex washer head, self-drilling screws spaced 9-1/2 in. oc.



2. **SIDE JOINT SEALANT:** Install a nominal 1/4 in. bead of Acryl-R SM5430 non-skinning roof sealant to the female edge of the exterior side prior to joining the insulated wall panels (Item 1).
3. **FASTENERS:** (Concealed-Fasteners) Install two 6 in. long, HWH BZLR DP5 TS N/W screws through the holes of 3-1/2 in. long clips. The screws shall be of sufficient length so as to properly engage the wall support member. Install clips at each wall support member.