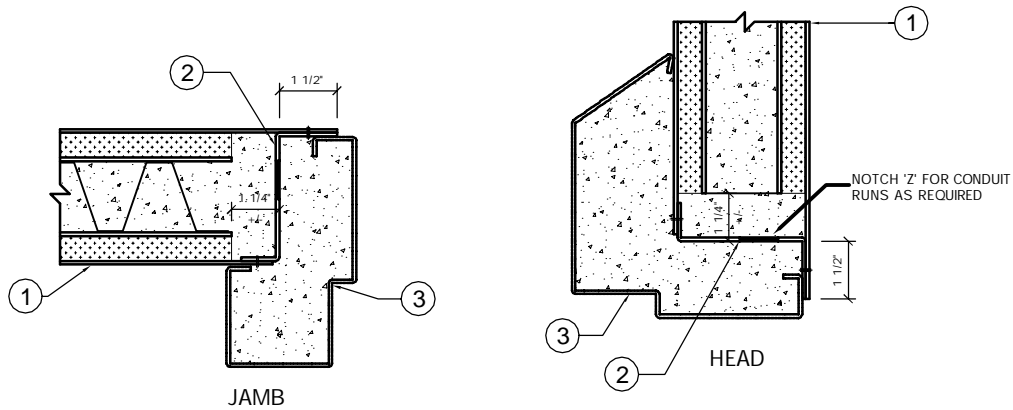


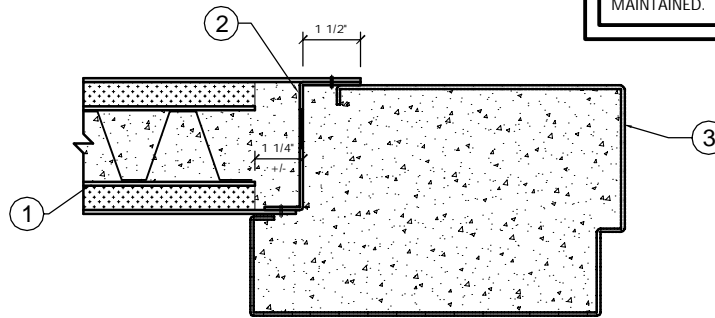
Trussbilt Manufacturing Frame Installation Detail

Detail No. F31

Investigated by Intertek for compliance with applicable requirements. For use with Trussbilt's Fire Rated Wall Panel System TBM/MWP 180-01
For use with load bearing and non-load bearing wall installations.



A FIRE RATED DOOR AND FRAME ASSEMBLY (INCLUSIVE OF RATED HARDWARE AND GLAZING) MUST BE INSTALLED IN CONJUNCTION WITH THIS DETAIL OR THE FIRE RATING WILL NOT BE MAINTAINED.



JAMB @ WIDE JAMB LOCK

1. Trussbilt fire rated wall panel TBM/MWP 180-01 (3 hour rating)
2. 12 gauge minimum galv. "z" channel w/ slotted grout holes. Spotwelded in place.
3. Fire rated frame and door assembly welded to fire rated wall panel per manufacturers instructions. Frame to be grouted.