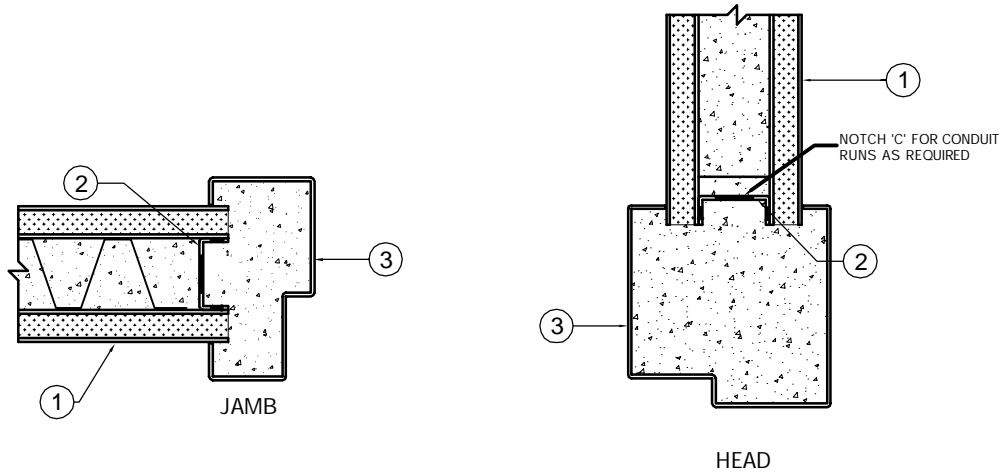


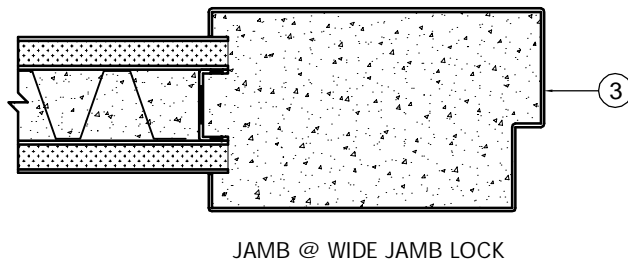
## Trussbilt Manufacturing Frame Installation Detail

### Detail No. F32

Investigated by Intertek for compliance with applicable requirements. For use with Trussbilt's Fire Rated Wall Panel System TBM/MWP 180-01  
For use with load bearing and non-load bearing wall installations.



A FIRE RATED DOOR AND FRAME ASSEMBLY (INCLUSIVE OF RATED HARDWARE AND GLAZING) MUST BE INSTALLED IN CONJUNCTION WITH THIS DETAIL OR THE FIRE RATING WILL NOT BE MAINTAINED.



1. Trussbilt fire rated wall panel TBM/MWP 180-01 (3 hour rating)
2. 12 gauge minimum galv. channel w/ slotted grout holes. Plug welded in place.
3. Fire rated frame and door assembly welded to fire rated wall panel per manufacturers instructions. Frame to be grouted.