

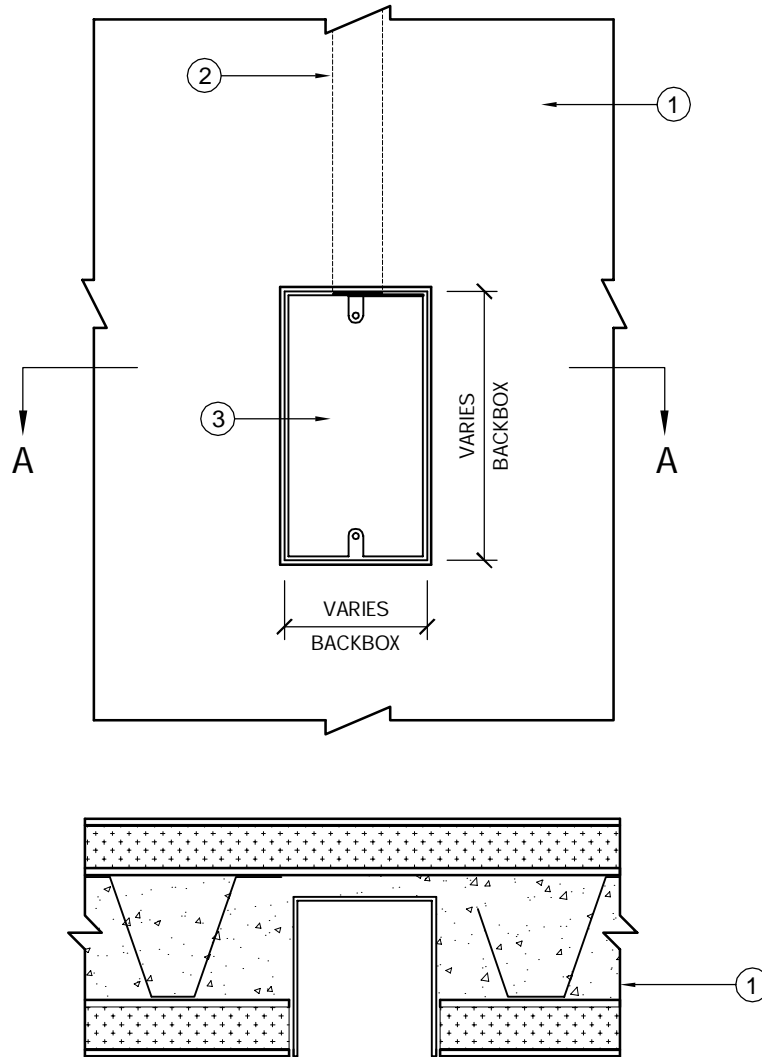
Trussbilt Manufacturing Electrical Box and Conduit Installation

Detail No. M31

Investigated by Intertek for compliance with applicable requirements. For use with Trussbilt's Fire Rated Wall Panel System TBM/MWP 180-01

LISTED CONDUIT
INSIDE OF PANEL
CONNECTED TO
BACK BOX W/ LISTED
CONNECTORS

NOTE: THE MAXIMUM AREA
FOR A SINGLE BOX IS 16 IN.²
AND 100 IN.² PER 100 FT.²
OF WALL FOR MULTIPLE
BOXES.



Section A - A

1. Trussbilt fire rated wall panel TBM/MWP 180-01 (3 hour rating)
2. Listed conduit inside of panel connected to listed back box w/ listed connector.
3. Listed electrical box welded to face sheet.