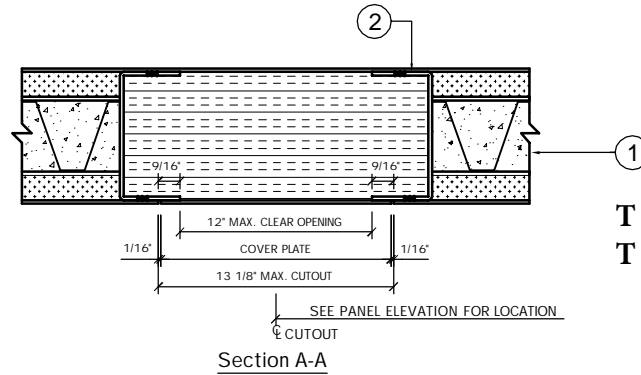
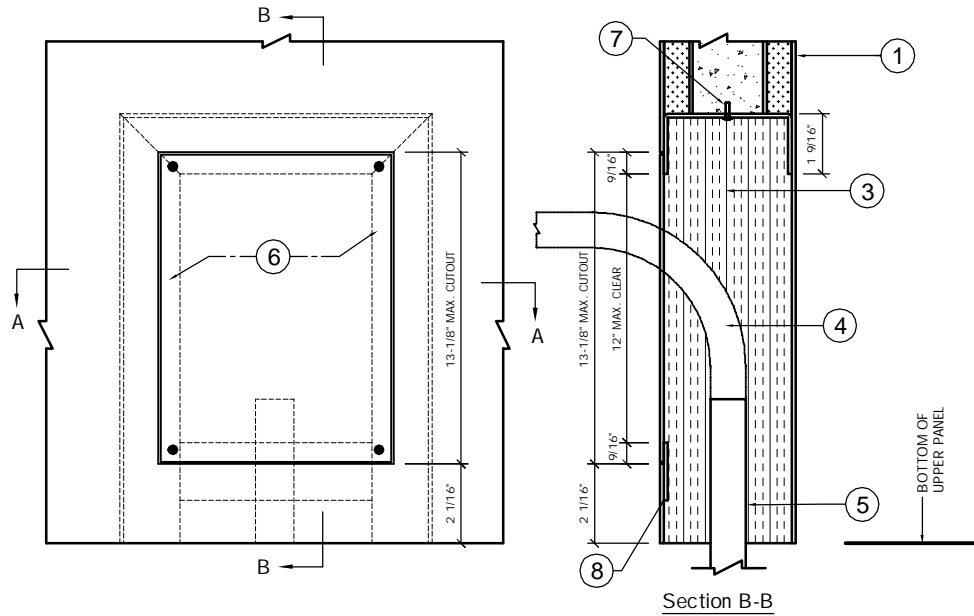


## Trussbilt Manufacturing Electrical Junction Box Detail Detail No. M32

Investigated by Intertek for compliance with applicable requirements. For use with Trussbilt's Fire Rated Wall Panel System TBM/MWP 180-01



\* IF COVER PLATE IS NOT USED, SPRAY ROCKWOOL WITH HILTI CP 672 SPEED SPRAY TO OVERLAP OPENING EDGES A MINIMUM OF 1/2" ON BOX OPENING SIDE.

**T rating not verified by Intertek.  
 T rating = 0 minutes**

- |  |  |
|--|--|
| <ol style="list-style-type: none"> <li>1. Trussbilt fire rated wall panel TBM/MWP 180-01 (3 hour rating)</li> <li>2. 12 gauge minimum galv. channel @ top and sides welded to both panel skins 6" maximum O.C.</li> <li>3. Mineral wool safig, minimum 4 PCF density, compressed 50%, flush with wall panel surfaces.</li> <li>4. 3/4" Listed conduit with 4" minimum bend radius (not by Trussbilt).</li> </ol> | <ol style="list-style-type: none"> <li>5. Listed conduit stubbed from bottom panel.</li> <li>6. 12 gauge galv. optional* cover plate attached with 1/4" diameter screws. Notched in field for conduit sweep.</li> <li>7. Screw at top center of box for grounding (optional).</li> <li>8. 12 gauge reinforcing plate.</li> </ol> |
|--|--|