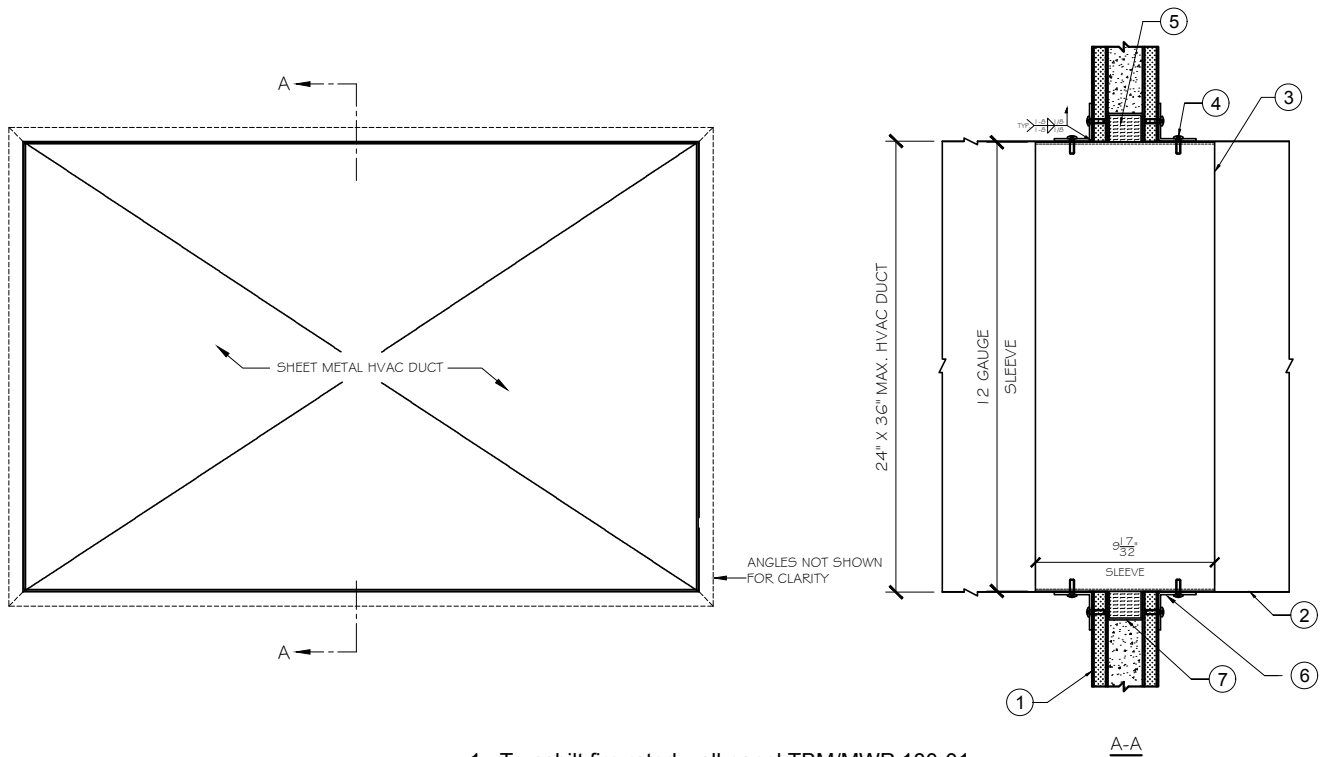


Trussbilt Manufacturing Through Penetration Firestop System

Detail No. P3-2

Investigated by Intertek for compliance with ASTM E814. For use with Trussbilt's Fire Rated Wall Panel System TBM/MWP 180-01. For use with load bearing and non-load bearing wall installations.



1. Trussbilt fire rated wall panel TBM/MWP 180-01 (3 hour rating)
2. Rectangular or square HVAC Duct, maximum size 24" x 36".
3. 12 gauge steel sleeve though panel.
4. Minimum #8 sheet metal Screws, 6" max. o.c.
5. Hilti CFS-BL Fire Stop Block.
6. 2" x 2" x 10 gauge steel angles.
7. Minimum 12 gauge steel channel.