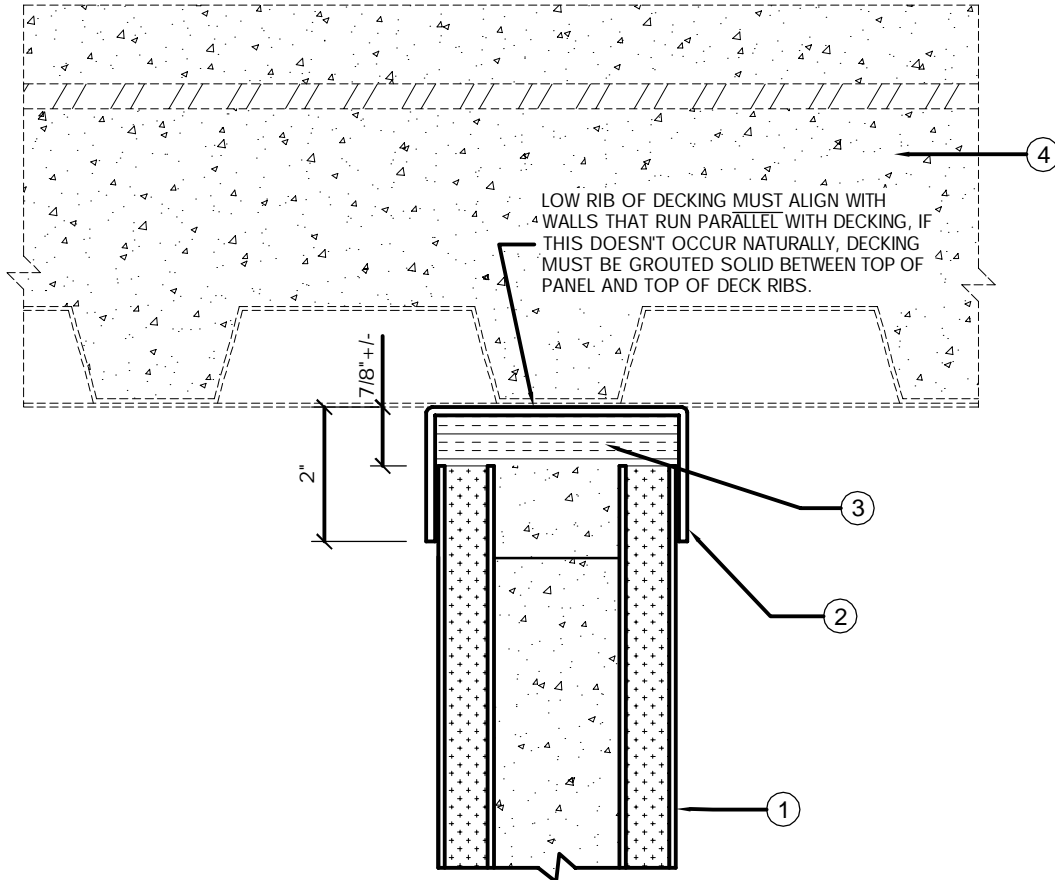


Trussbilt Manufacturing Top of Wall Joint Detail

Detail No. T34

Investigated by Intertek for compliance with applicable requirements. For use with
Trussbilt's Fire Rated Wall Panel System TBM/MWP 180-01
For use with load bearing and non-load bearing wall installations.



1. Trussbilt fire rated wall panel TBM/MWP 180-01 (3 hour rating)
2. 12 gauge (minimum) A60 or 409SS channel welded to wall panel and decking per manufacturer's details.
3. Cavity between end of wall panel and trim piece to be filled with concrete or rockwool insulation (4 PCF compressed 50% minimum).
4. Flat bottom fire rated concrete on fluted metal deck assembly.