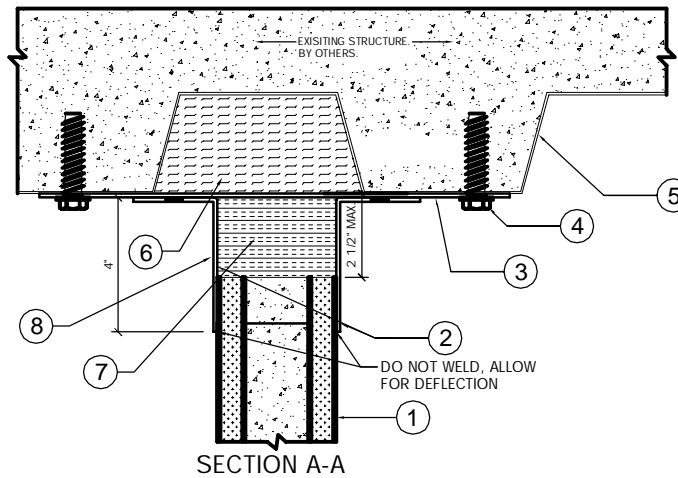
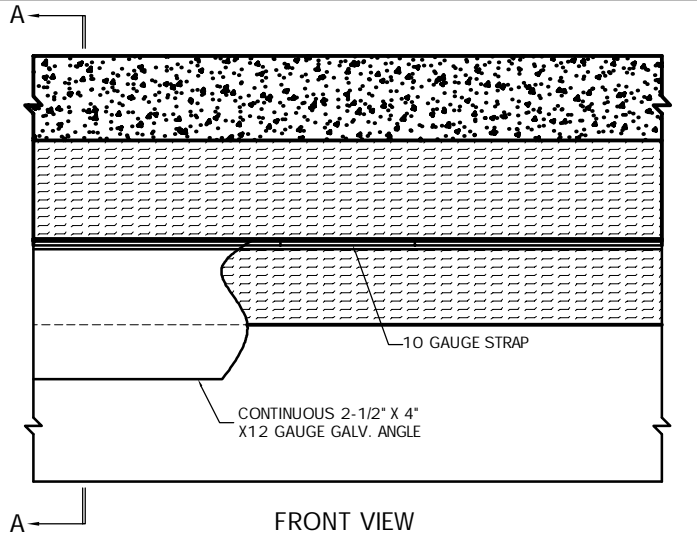


Trussbilt Manufacturing Top of Wall Joint Detail

Detail No. T35

Wall parallel to floor decking under valley - non-load bearing wall.
Investigated by Intertek for compliance with applicable requirements. For use with
Trussbilt's Fire Rated Wall Panel System TBM/MWP 180-01
For use with non-bearing wall installations.



- | | | |
|--|---|---|
| <p>1. Trussbilt fire rated wall panel TBM/MWP 180-01 (3 hour rating)</p> <p>2. Continuous 2-1/2" x 4" x 12 gauge (min.) A60, 409SS or 304SS w/ 9/16" Ø holes at 6" O.C. (max.).</p> <p>3. 4" x 10 gauge A60 strap with (2) 9/16" Ø holes 1" from each end. Locate strap 18" O.C. along wall run when wall is parallel or perpendicular but doesn't line up with a decking flute.</p> | <p>4. 1/2" x 2-1/2" min. concrete anchor to existing ceiling, both ends of strap.</p> <p>5. Fire rated ceiling/floor assembly - fluted decking parallel to wall run.</p> <p>6. Hilti CP777 Speed Plugs or equivalent, friction fitted to completely fill flute.</p> <p>7. Mineral wool safin, min. 4 PCF density, compressed 50%, flush w/ wall surfaces.</p> | <p>8. Minimum 1/8" (wet) thickness Hilti CFS-SP WB or equivalent firestop joint spray to completely cover mineral wool, overlapping minimum 1/2" onto wall panel straps & metal deck.</p> |
|--|---|---|