

Trussbilt Manufacturing

Top of Wall Joint Detail

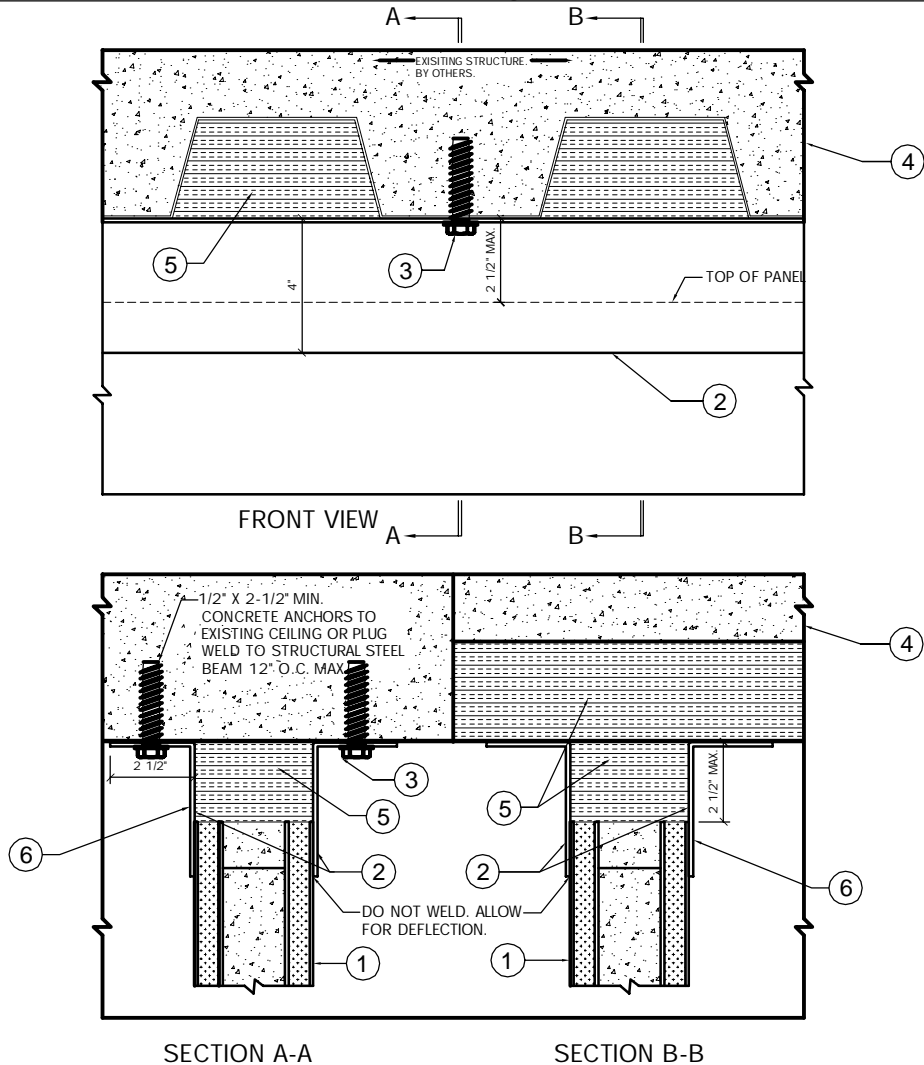
Detail No. T37

Wall perpendicular to floor decking - non-load bearing wall.

Investigated by Intertek for compliance with applicable requirements. For use with

Trussbilt's Fire Rated Wall Panel System TBM/MWP 180-01

For use with non-bearing wall installations.



- | | |
|--|---|
| <ol style="list-style-type: none"> 1. Trussbilt fire rated wall panel TBM/MWP 180-01 (3 hour rating) 2. Continuous 2-1/2" x 4" x 12 gauge (min.) A60, 409SS or 304SS w/ 9/16" Ø holes at 6" O.C. (max.). 3. 1/2" x 2-1/2" min. concrete anchor to existing ceiling, both ends of strap. | <ol style="list-style-type: none"> 4. Fire rated ceiling/floor assembly - fluted decking parallel to wall run. 5. Mineral wool saffing, min. 4 PCF density, compressed 50%, flush w/ wall surfaces. 6. Minimum 1/8" (wet) thickness Hilti CFS-SP WB or equivalent firestop joint spray to completely cover mineral wool, overlapping minimum 1/2" onto wall panel straps & metal deck. Both sides. |
|--|---|