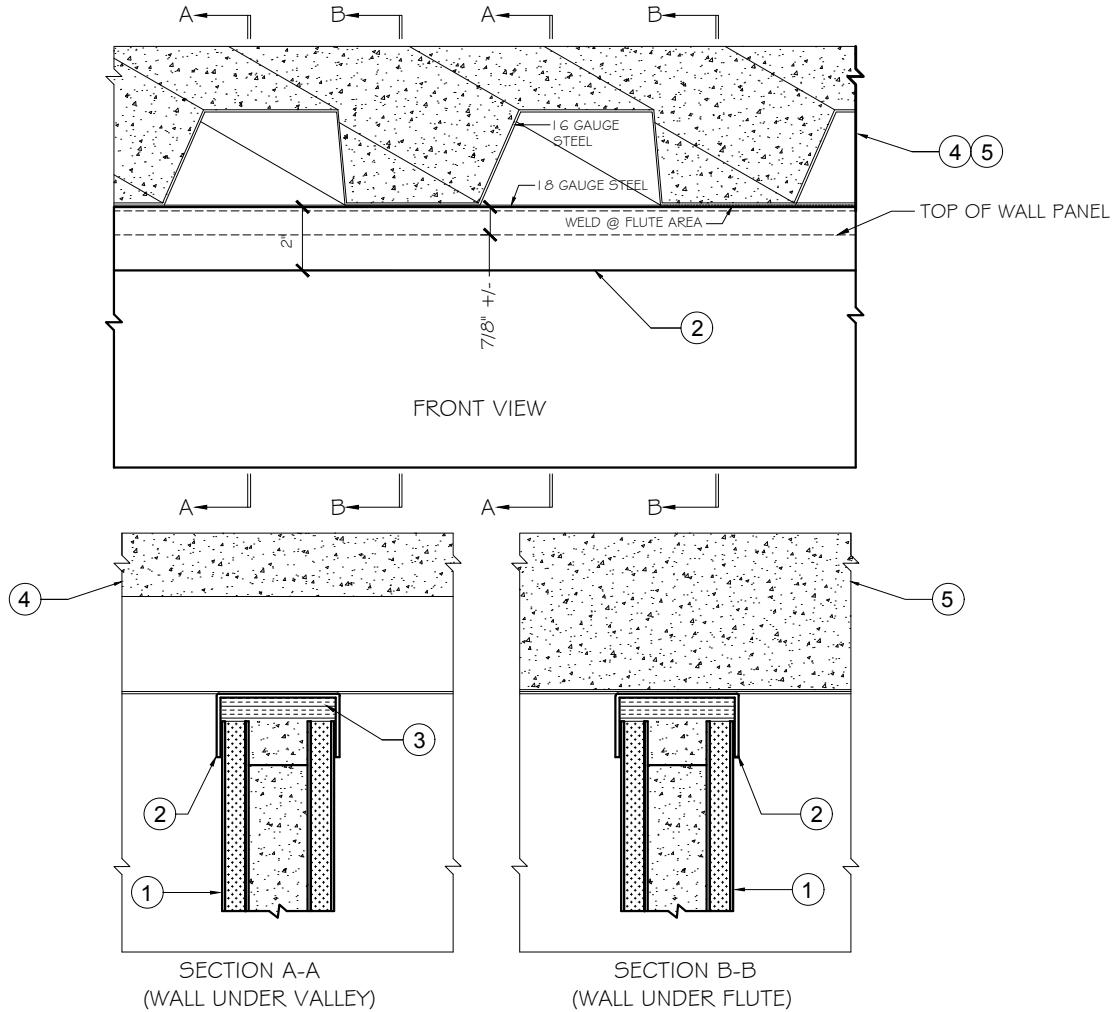


## Trussbilt Manufacturing Top of Wall Joint Detail Detail No. T39

Wall at angle (up to perpendicular) with composite floor decking flutes - load bearing & non-load bearing wall installations.  
 Investigated by Intertek for compliance with applicable requirements. For use with Trussbilt's Fire Rated Wall Panel System TBM/MWP 180-01  
 For use with load bearing & non-load bearing wall installations.



1. Trussbilt fire rated wall panel TBM/MWP 180-01 (3 hour rating)
2. 12 gauge (minimum) A60 or 409SS channel welded to wall panel and decking per manufacturer's details.
3. Cavity between end of wall panel and trim piece to be filled with concrete or rockwool insulation (4 PCF compressed 50% minimum)
4. Fire rated ceiling/floor assembly - wall under valley of composite closed cell decking.
5. Fire rated ceiling/floor assembly - wall under flute of composite closed cell decking.