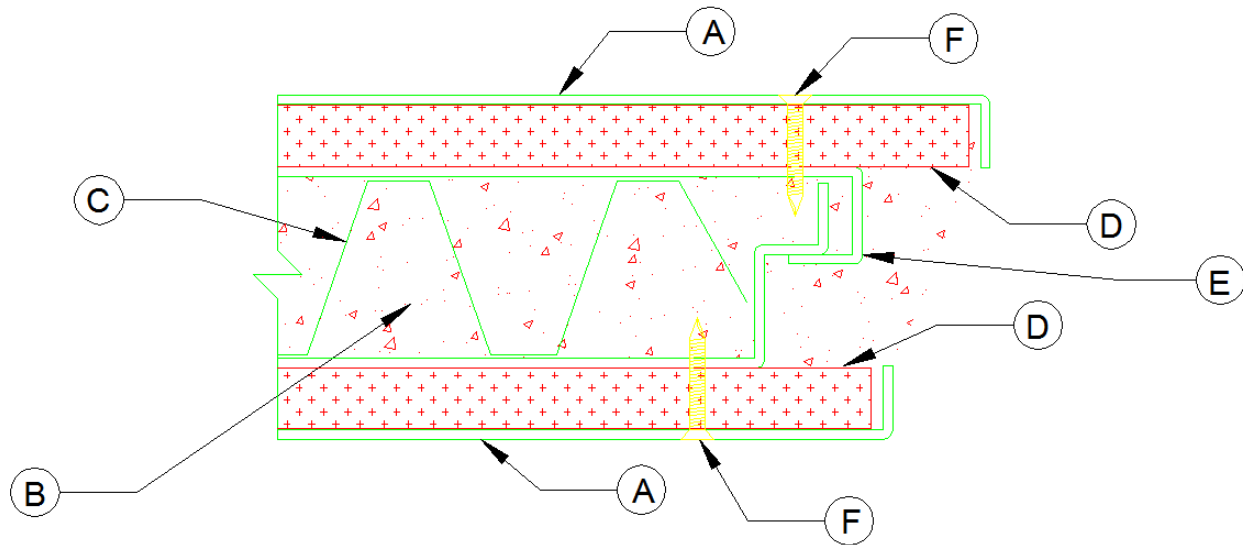


Trussbilt LLC
Design No. TBL/MWP 180-01
Fire Rated Trusswall Panel
ASTM E119, CAN/ULC S101, UL 263
Rating: 3 Hour, Bearing Wall Assembly
Max. Load: 1,700 PLF



CERTIFIED MANUFACTURER: Trussbilt LLC

CERTIFIED PRODUCT: Fire Rated Wall Panel

CERTIFIED MODEL: FR3 Trusswall

COMPONENTS:

- A. 12 GA steel outer skins; ASTM A1011/A1011M mild steel, ASTM A653A/A653M galvanized steel, or ASTM A240/A240M 409 series stainless steel
- B. Max. 1/8 in. aggregate size early strength cement (filled in field)

C. 28 GA min. steel stiffeners

D. 5/8 in. thick G-P Densglass sheathing attached to outer skin and inner sheet with Marathon 292 SEE-GEE non-combustible adhesive or with fasteners (see Item F)

E. 12 GA inner sheets

F. 1-1/4 in. long 8-32 F.H. carbon steel screws, welded and finished smooth with vertical spacing 21 in. min., 8 in. from ends, 14 in. min. horizontal spacing, 2 in. min. from edges