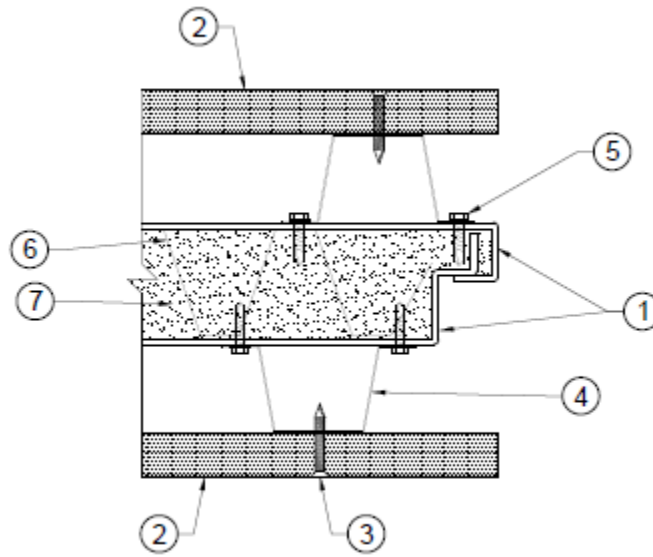


Trussbilt LLC
Design No. TBL/MWP 120-02
Fire Rated Trusswall Panel
ASTM E119, CAN/ULC S101, UL 263
Rating: 2 Hour, Non-load Bearing



CERTIFIED MANUFACTURER: Trussbilt LLC

CERTIFIED PRODUCT: Fire Rated Wall Panel

CERTIFIED MODEL: Trusswall

COMPONENTS:

1. 12 GA steel outer skins; ASTM A1011A/A1011M Mild Steel, ASTM A653A/A653M Galvanized Steel, or ASTM A240/A240M 409 Series Stainless Steel. Panels secured together by 2 in. welds 12 in. on center (oc).
2. Min. 3/4 in. thick Type X gypsum board fastened max. 12 in. oc. All joints taped and covered with joint compound.
3. Min. #6, 1-1/4 in. long Type "S" drywall screws.
4. Min. 20 GA 1-1/2 in. high steel furring channels.
5. #10 x 3/4 in. long hex-head, self-drilling TEK screws, 12 in. oc, max. 3 in. from ends.
6. 28 GA steel continuous W-channel inner stiffener.
7. CMX foam concrete density 30 (±2) pcf.