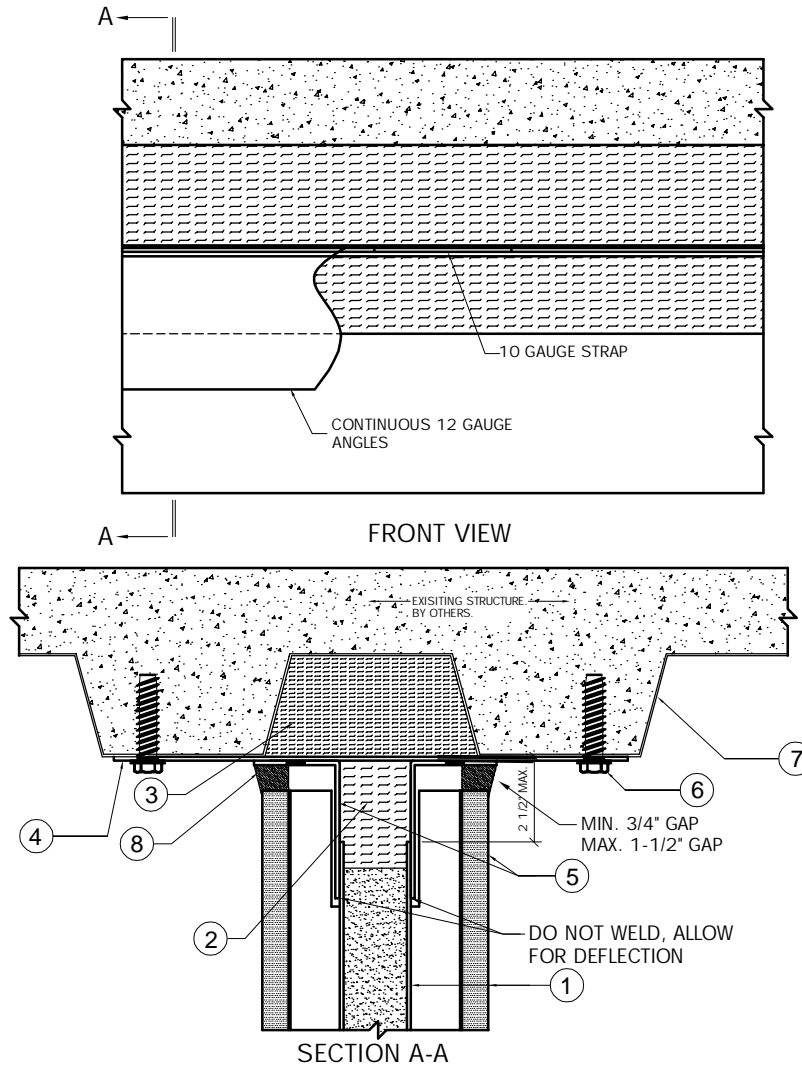


Trussbilt, LLC Top of Wall Joint Detail Detail No. T25

Wall parallel to floor decking under valley - non-bearing wall.
Investigated by Intertek for compliance with applicable requirements. For
use with Trussbilt's Fire Rated Wall Panel System TBL/MWP 120-02.
For use with non-bearing wall installations.



1. Trussbilt fire rated wall panel TBL/MWP 120-02 (2 hour rating)
2. Cavity between end of ceiling panel and trim piece to be filled with rockwool insulation (4 PCF compressed 50% minimum).
3. Hilti CP777 Speed Plugs friction fitted to completely fill flute.
4. 4" x 10 gauge A60 or 409SS strap with (2) 9/16" Ø holes 1" from each end. Locate strap 18" o.c. along wall run when wall is parallel or perpendicular but doesn't line up with a decking flute.
5. Continuous 2-1/2" x 4" x 12 gauge (min.) A60, 409SS or 304SS angles w/ 9/16" Ø holes at 6" o.c. (max.).
6. 1/2" x 2-1/2" (min.) concrete anchor to existing ceiling, both ends of strap.
7. Fire rated ceiling/floor assembly - fluted decking parallel to wall run.
8. Fill gap with Hilti Firestop sealant CP606 or Hilti Firestop FS-One sealant.