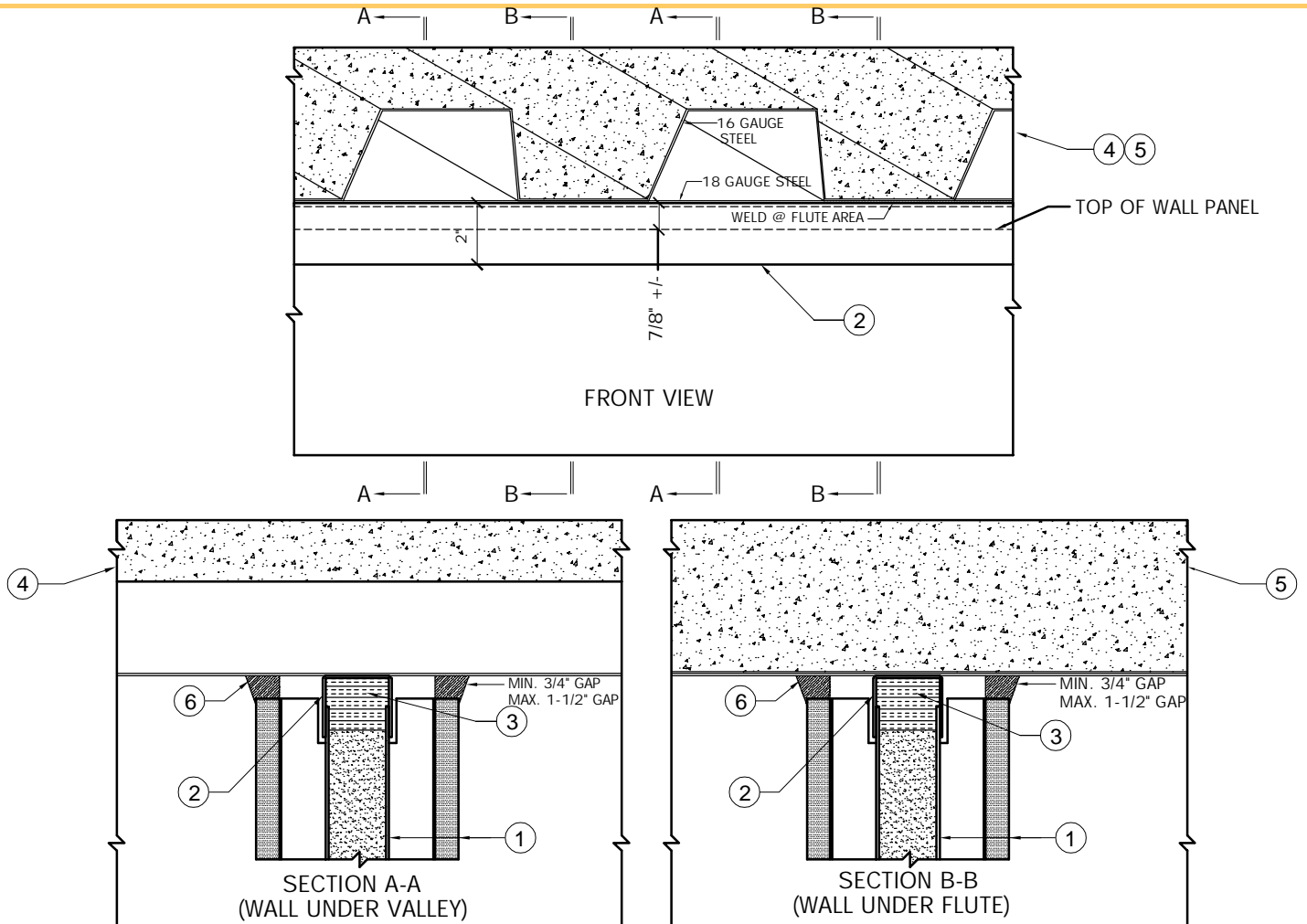


## Trussbilt, LLC Top of Wall Joint Detail Detail No. T29

Wall at angle (up to perpendicular) with composite floor decking flutes - non-bearing wall installations.  
Investigated by Intertek for compliance with applicable requirements. For use with Trussbilt's Fire Rated Wall Panel System TBL/MWP 120-02. For use with non-bearing wall installations.



1. Trussbilt fire rated wall panel TBL/MWP 120-02 (2 hour rating)
2. 12 gauge (minimum) A60 or 409SS channel welded to wall panel and decking per manufacturer's details.
3. Cavity between end of wall panel and trim piece to be filled with concrete or rockwool insulation (4 PCF compressed 50% minimum)
4. Fire rated ceiling/floor assembly - wall under valley of composite closed cell decking.
5. Fire rated ceiling/floor assembly - wall under flute of composite closed cell decking.
6. Fill gap with Hilti Firestop sealant CP606 or Hilti Firestop sealant FS-One.