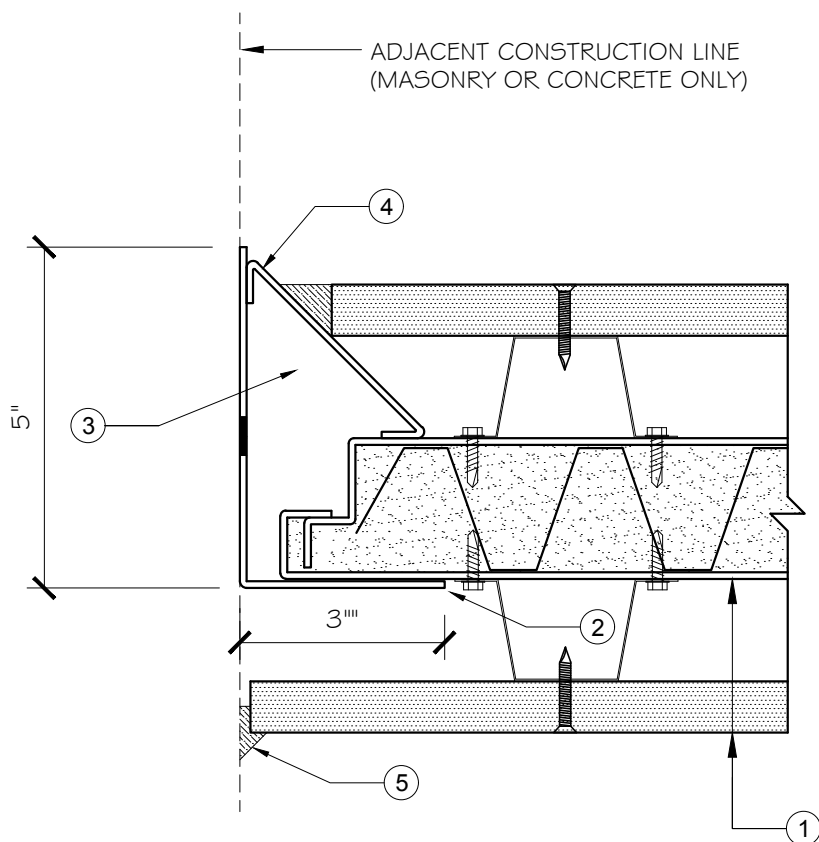


Trussbilt, LLC End of Wall Joint Detail

Detail No. E24

Investigated by Intertek for compliance with applicable requirements. For use with Trussbilt's Fire Rated Wall Panel System TBL/MWP 120-02.



1. Trussbilt fire rated wall panel TBI/MWP 120-02 (2 hour rating)
2. 12 gauge (minimum) A60 or 409SS wall channel:
 - Concrete / Masonry Substrate: prepared with holes for 3/8" (minimum) diameter mechanical anchors at 18" o.c. (maximum)
3. Cavity between end of wall panel and trim can be void of material or filled with rockwool insulation (4 PCF compressed 50% minimum).
4. 12 gauge (minimum) A60 or 409SS wall closure plate welded to wall panel and wall channel.
5. Fill gap with Hilti Firestop sealant CP606 or Hilti Firestop sealant FS-One.