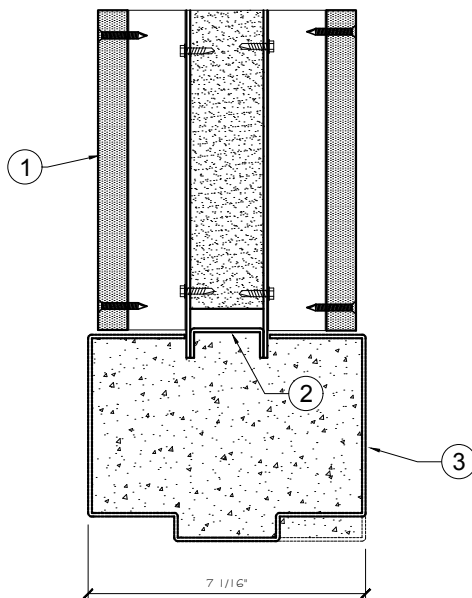


Trussbilt, LLC Frame Installation Detail

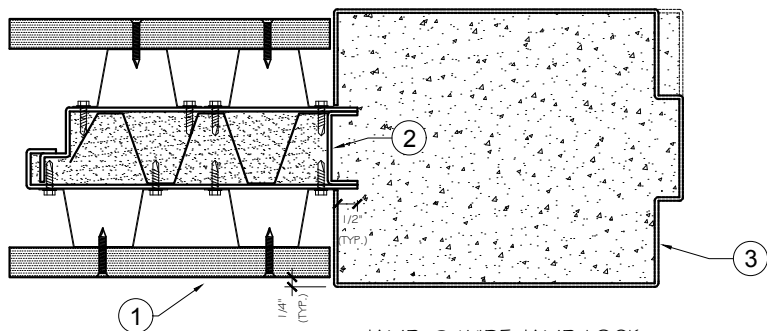
Detail No. F21

Investigated by Intertek for compliance with applicable requirements. For use with Trussbilt's Fire Rated Wall Panel System TBL/MWP 120-02. For non-bearing wall installations.

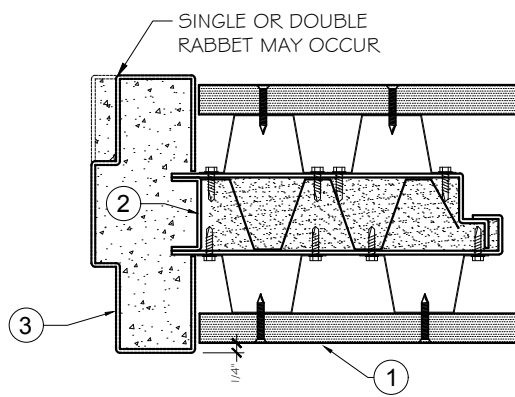
A FIRE RATED DOOR AND FRAME ASSEMBLY (INCLUSIVE OF RATED HARDWARE AND GLAZING) MUST BE INSTALLED IN CONJUNCTION WITH THIS DETAIL OR THE FIRE RATING WILL NOT BE MAINTAINED.



HEAD



JAMB @ WIDE JAMB LOCK



JAMB

1. Trussbilt fire rated wall panel TBM/MWP 120-02 (2 hour rating)
2. 12 gauge minimum galv. channel. Spot or plug welded in place.
3. Fire rated frame and door assembly welded to fire rated wall panel per manufacturers instructions. Frame to be grouted.