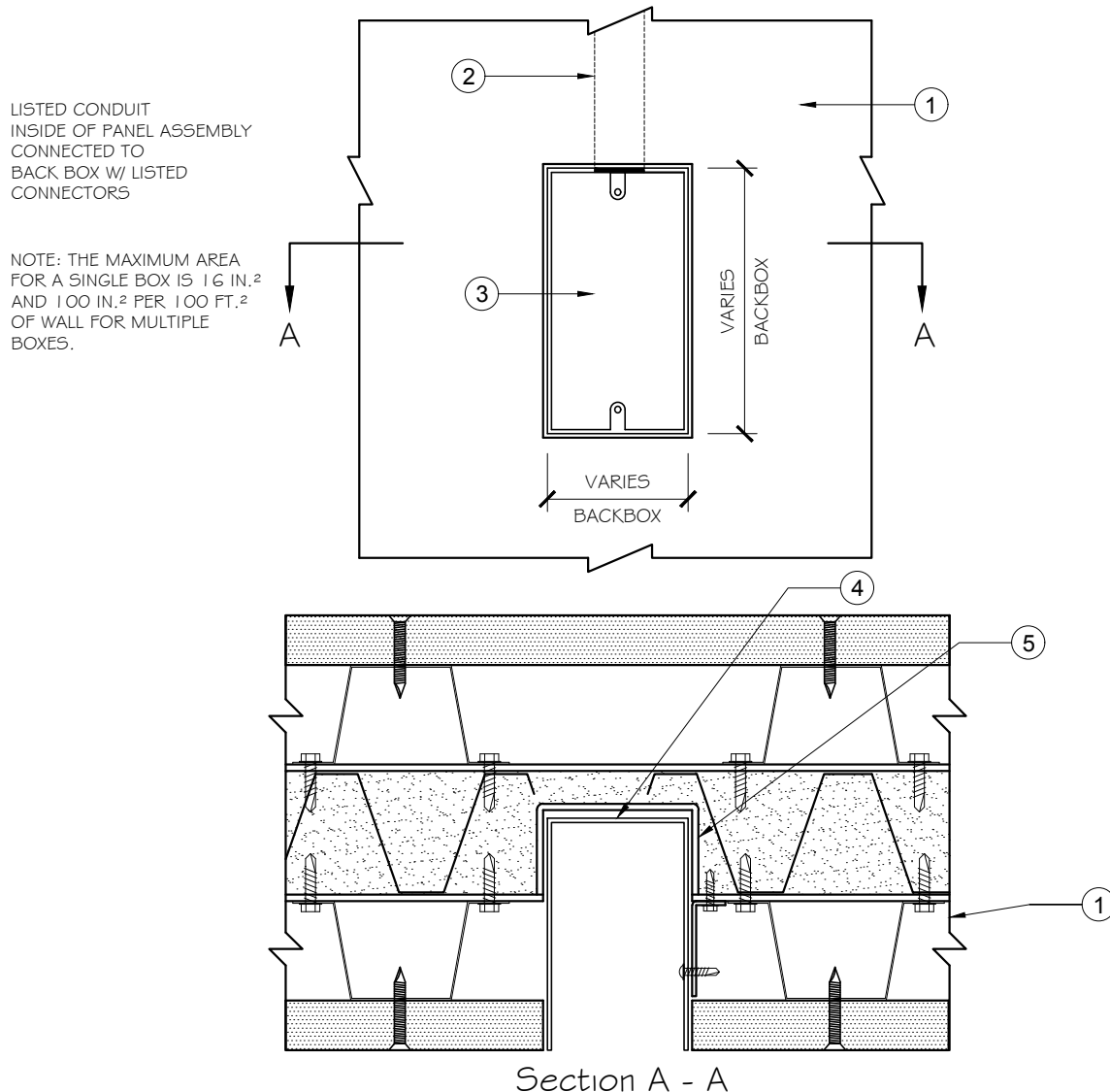


Trussbilt, LLC

Electrical Box and Conduit Installation

Detail No. M21

Investigated by Intertek for compliance with applicable requirements. For use with Trussbilt's Fire Rated Wall Panel System TBL/MWP 120-02.



1. Trussbilt fire rated wall panel TBM/MWP 120-02 (2 hour rating)
2. Listed conduit inside of panel connected to listed back box w/ listed connector.
3. Listed electrical box.
4. Electric box may be mounted either side of panel. Penetration through panel not permitted.
5. 16 gauge minimum grout protection.