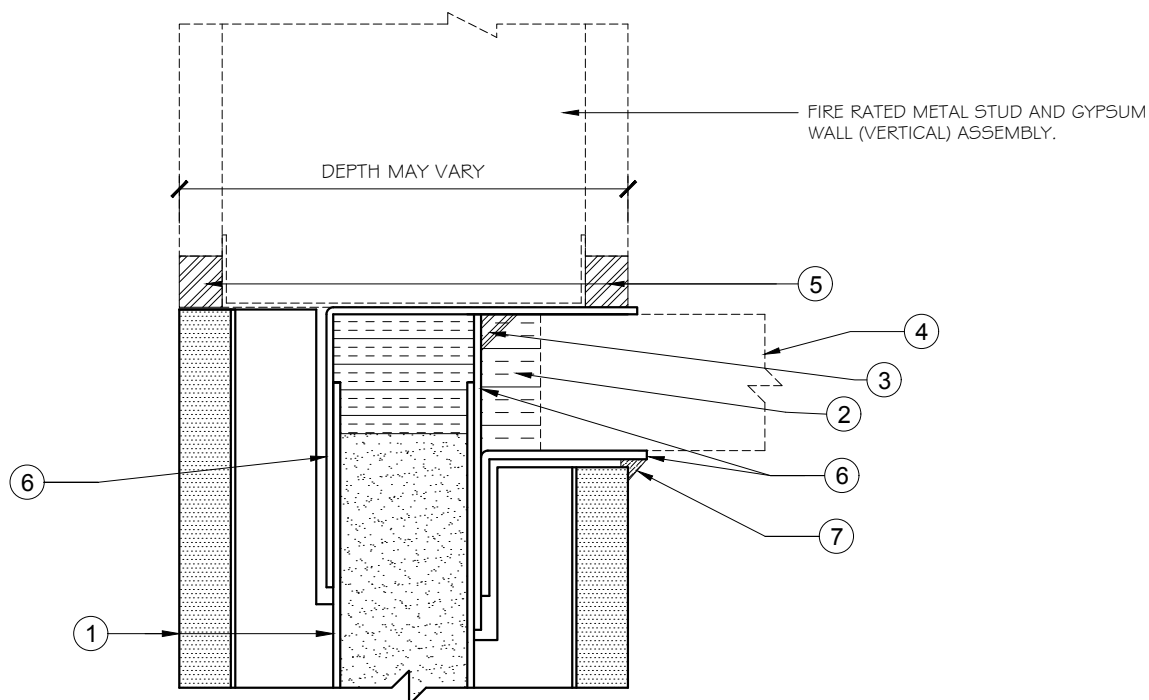


Trussbilt, LLC Top of Wall Joint Detail

Detail No. T23

Investigated by Intertek for compliance with applicable requirements. For use with Trussbilt's Fire Rated Wall Panel System TBL/MWP 120-02. For use with non-bearing wall installations.



1. Trussbilt fire rated wall panel TBL/MWP 120-02 (2 hour rating)
2. Cavity between end of ceiling panel and trim piece to be filled with rockwool insulation (4 PCF compressed 50% minimum).
3. 1/4" x 1/4" (minimum) thickness of Hilti Firestop CP606 sealant or Hilti Firestop FS-One sealant.
4. Maximum security steel ceiling panel. TrussDek or similar.
5. 5/8" (minimum) thickness of Hilti Firestop CP606 sealant or Hilti Firestop FS-One sealant
6. 12 gauge (minimum) A60 or 409SS angles / plates continuous both sides.
7. Fill gap with Hilti Firestop sealant CP606 or Hilti Firestop sealant FS-One.