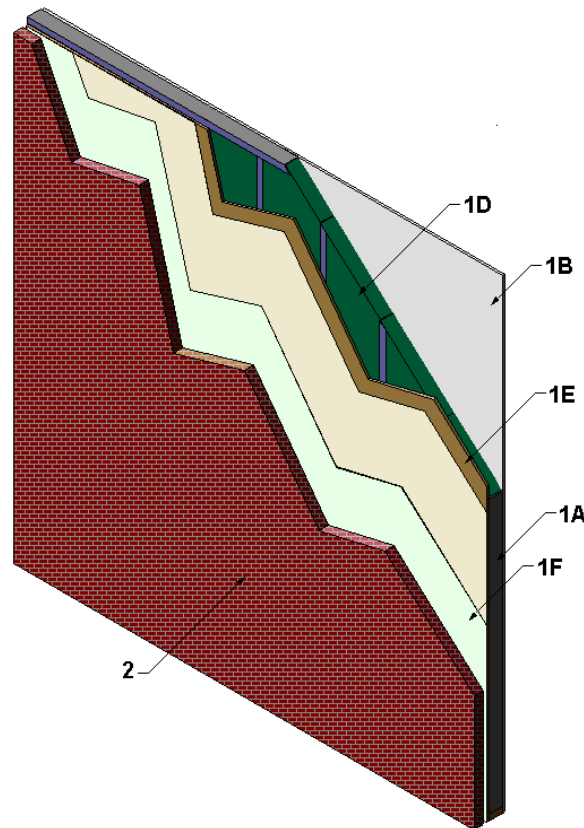


Louisiana-Pacific Corporation
Design No. BTC/WPPS 60-04
Non-Loadbearing Wall
Blazeguard® Sheathing
ASTM E119
Fire Resistance Rating: 1 Hour
(See Item 1B for exposure side requirements)
Restricted Load – Max. 41.6% design load



1. WALL ASSEMBLY: Construct a wall assembly using the following elements:

A. STEEL FRAMING: Install channel-shaped steel studs spaced a max. of 16 in. on center (oc) and meeting the following requirements:

- Min. 0.033 in. (20 GA) thick
- Min. 5-1/2 in. web
- Min. 1-5/8 in. flange

Use top and bottom steel track with size and gauge requirements equal to the steel studs. Attach these to the floor and ceiling with appropriate mechanical fasteners spaced max. 24 in. oc. Fasten steel studs to top and bottom track using 1/2 in. long, min. No. 8 pan-head steel framing screws.



B. GYPSUM BOARD –

- Exterior Fire Exposure Only: Install one layer of nominal 5/8 in. thick Type X gypsum board, oriented vertically on interior side. Secure gypsum board using nominal 1 in. long, No. 6 Type S screws spaced max. 8 in. oc.
- Exterior and Interior Fire Exposure: Install two layers of nominal 1/2 in. thick Type X gypsum board, oriented vertically on interior side. Secure base layer using nominal 1 in. long, No. 6 Type S screws spaced max. 8 in. oc. Secure face layer with the joints staggered from the base layer, using nominal 1-5/8 in. long, No. 6 Type S screws spaced max. 8 in. oc.

C. JOINT TAPE AND COMPOUND (Not Shown)
– Install vinyl or casein, dry or premixed joint compound applied to exterior face of gypsum board in two coats to all exposed fastener heads and gypsum board joints. Install min. 2 in. wide paper, plastic, or fiberglass tape embedded in the first layer of compound over joints in gypsum board.

D. INSULATION – Install Listed, nominal 5-1/2 in. thick, nominal 2.5 pcf density unfaced mineral fiber batt insulation friction fit between the steel framing (Item 1A).

E. **CERTIFIED MANUFACTURER** – Louisiana-Pacific Corporation

CERTIFIED PRODUCT – Wood Sheathing, Fire Retardant Coated Sheathing

CERTIFIED MODEL – Blazeguard® (Direct Applied, Plywood) or Blazeguard® (Direct Applied, OSB)

Install nominal 48 in. wide x 96 in. tall, nominal 15/32 in. min. thick Blazeguard® (Direct Applied, Plywood) or nominal 7/16 in. min. thick Blazeguard® (Direct Applied, OSB) sheathing with the white side facing out. Install sheathing staggered at gypsum seams. Secure sheathing to steel framing (Item 1A) using 1-7/8 in. long Type S screws spaced 6 in. oc around the perimeter and 12 in. oc in the field.

F. VAPOR BARRIER – Install Tyvek® HomeWrap® vapor barrier fastened over the sheathing (Item 1E) using sufficient fasteners to prevent air pockets in the wrap.

2. **EXTERIOR WALL COVERING**: Install nominal 4 in. wide brick veneer fastened with corrugated metal wall ties attached to steel framing (Item 1A), through sheathing (Item 1E) with nominal 1-1/4 in. long, No. 6 Type S screws, spaced a max. of every fourth course and matching the stud spacing horizontally.