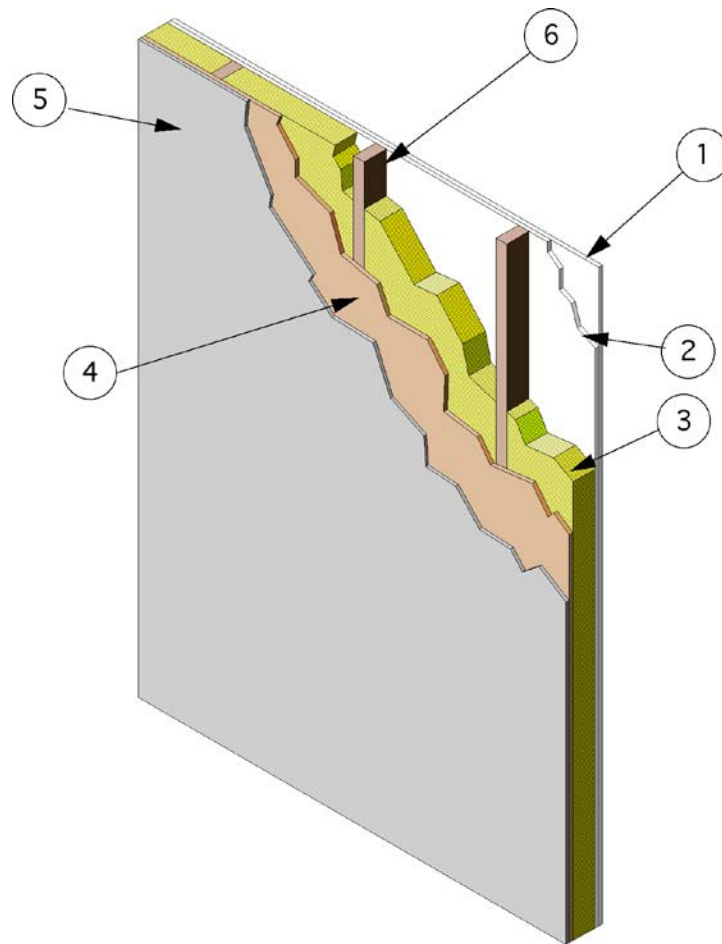

**Louisiana-Pacific Corporation
Design No. BTC/WPPS 120-01
Loadbearing Wall Assembly
Blazeguard® Sheathing
ASTM E119
Fire Resistance Rating: 2 Hour**



- 1. WALLBOARD, GYPSUM:** Fire side. Face layer 5/8 in. thick x 4 ft. x 10 ft. Type X gypsum wallboard, applied vertically, fastened with 8d cement coated nails, 2-3/8 in. long cup-head drywall nails with 0.113 in. shank diameter and 9/32 in. head diameter, spaced 8 in. on center (oc) along all studs and runners. All joints and nail heads were covered with paper tape and/or gypsum joint compound.

JOINT TAPE AND COMPOUND – Vinyl or casein, dry or premixed joint compound applied to face layers of gypsum wallboard in two coats to all exposed fastener heads and gypsum wallboard joints. A min. 2 in. wide paper, plastic, or fiberglass tape embedded in first layer of compound over joints in gypsum wallboard.



2. **WALLBOARD, GYPSUM:** Base layer 5/8 in. thick x 4 ft. x 10 ft. Type X gypsum wallboard, applied vertically, fastened with 6d cement coated nails, 1-7/8 in. long, cup-head drywall nails with 0.0915 in. shank diameter and 1/4 in. head diameter, spaced 6 in. oc along all studs and runners.
3. **CAVITY INSULATION:** Unfaced mineral fiber batt insulation having a nominal 3-1/2 in. thickness, 3 pcf density, and friction fit between the studs, cross-bracing, top and bottom plates.
4. **PANEL:** A nominal 48 x 96 in. panel of either a nominal 1/2 in. (APA rated 15/32 in.) thick plywood or 7/16 in. thick OSB with 0.060 in. thick inorganic laminate boards** adhered to both faces of the wood sheet. Plywood core panels are nominal 5/8 in. thick and OSB core panels are nominal 9/16 in. thick. Panels are attached to the wood framing with 1-7/8 in. long, 6d nails, and spaced 6 in. oc around the perimeter and 12 in. oc in the field. (**The inorganic laminate boards are composed of a fire resistant slurry imbedded into a glass fiber mat and are called Pyrotite Sheets).

LISTED MANUFACTURER: Louisiana-Pacific Corporation

WOOD SHEATHING – Fire Retardant Coated Sheathing Blazeguard® (Direct Applied, Plywood) or Blazeguard® (Direct Applied, OSB)

5. **EXTERIOR FINISH:** (Optional) Installed in accordance with manufacturer's installation instructions.
 - A. T-1-11 PLYWOOD – APA rated siding, Series 303, including textures, rough sawn, MDO, brushed, channel grooved, and lap siding.
 - B. PARTICLE BOARD – OSB, wafer board, or hardboard exterior siding building sidings, including patterned panels.
 - C. CEMENTITIOUS STUCCO – Portland cement or synthetic stucco systems with self-furring metal lath or adhesive base coat. Min. thickness 3/8 in.
 - D. VINYL SIDING – Exterior plastic siding.
6. **WOOD STUDS:** Nominal 2 in. x 4 in. wood studs spaced 16 in. oc, with two 2 in. x 4 in. wood studs as a top plate and one 2 in. x 4 in. wood stud as a bottom plate, and horizontal cross-bracing positioned at mid-height of the wall.