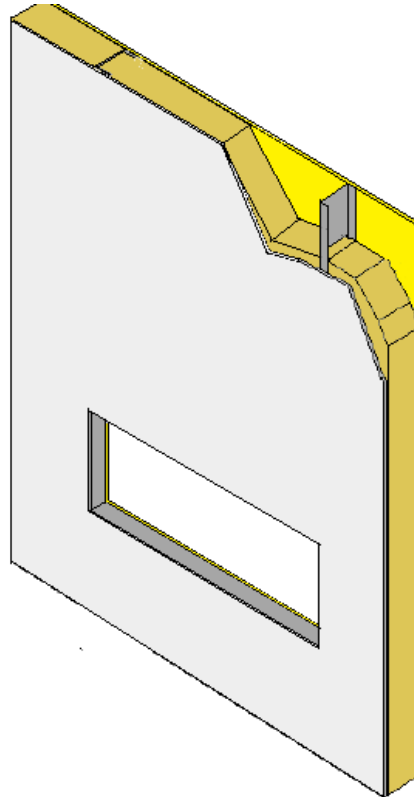

Huntsman Building Solutions (USA) LLC
Design No. HBS/FI 30-06
Exterior – Non-Load Bearing Wall Assembly
Heatlok® HFO Closed Cell Spray Foam Insulation
NFPA 285
Rating: Meets Conditions of Acceptance



- 1. GYPSUM BOARD:** 5/8 in. thick Type X gypsum board installed with long dimension perpendicular to steel studs. Attach studs with # 6, Type S, 1-1/4 in. long bulge-head screws, spaced 8 in. on center (oc) around the perimeter and 12 in. oc in the field.
- 2. STEEL STUDS:** Min. 3-5/8 in., 25 GA steel studs. Max. spacing 24 in. oc. Secure steel studs to top and bottom track using 1/2 in. self-drilling, zinc plated truss screws.

3. INTERIOR WALL INSULATION:

CERTIFIED PRODUCT: Heatlok® HFO Polyurethane Foam Insulation

Install nominal 3-5/8 in. thick, 2.0 pcf density, layer of Heatlok® HFO polyurethane foam to completely fill the steel stud cavity.

- 4. JOINT COMPOUND:** (Not Shown) Vinyl or casein, dry or premixed, joint compound applied to face layers of gypsum board in two coats, to all exposed fastener heads and gypsum board joints.



- 5. EXTERIOR SHEATHING:** Install 5/8 in. thick, GP DensGlass® Exterior Sheathing over exterior side of steel studs using 1-1/4 in. self-tapping screws, spaced 8 in. oc around the perimeter and 12 in. oc in the field.

Consult the listing report on the Directory of Building Products (<https://bpdirectory.intertek.com>) for the edition of the standard(s) evaluated.