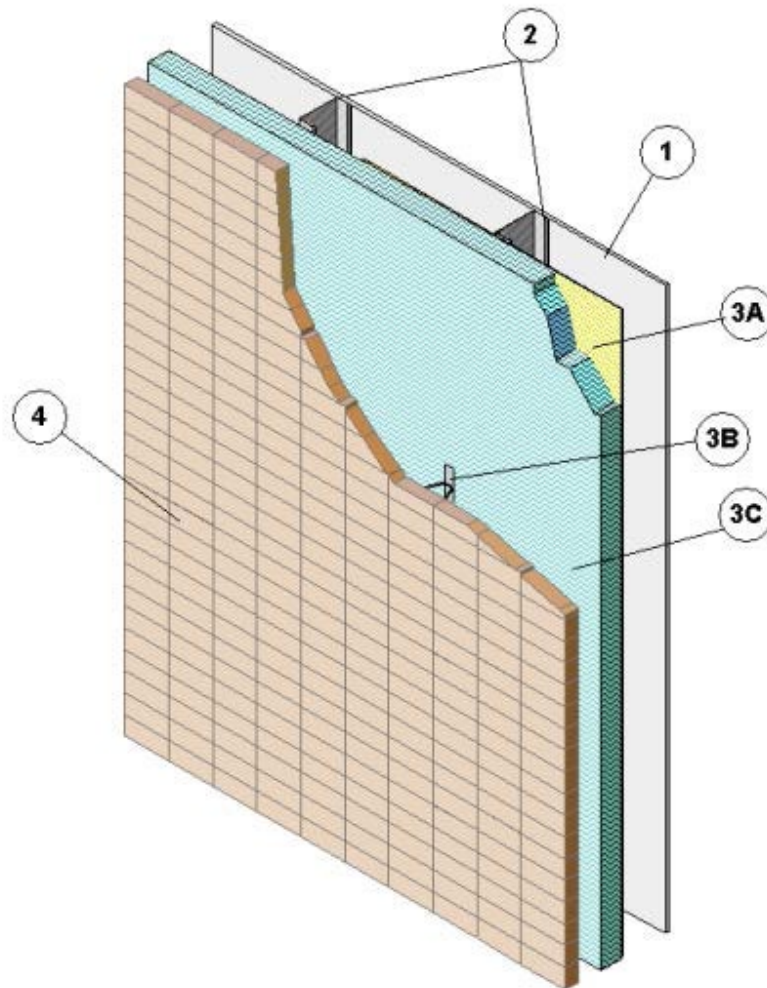

Huntsman Building Solutions (USA) LLC
Design No. HBS/FI 30-07
Exterior – Non-Load Bearing Wall Assembly
Heatlok® HFO Closed Cell Spray Foam Insulation
NFPA 285
Rating: Meets Conditions of Acceptance



1. GYPSUM BOARD: 5/8 in. thick FIREBLOC® Type X gypsum board installed with long dimension perpendicular to steel studs. Attach studs with # 6, Type S, 1-1/4 in. long bugle-head screws, spaced 8 in. on center (oc) around the perimeter and 12 in. oc in the field.

2. STEEL STUDS: Install min. 3-5/8 in., 25 GA, steel studs spaced max. 24 in. oc. Secure studs to 25 GA steel tracks at the top and bottom using # 8, 1/2 in. long pan-head framing screws. Install 16 GA lateral braces (not shown), 48 in. vertically oc. Secure bracing with 1/2 in. self-tapping screws.



3. EXTERIOR WALL COVERING: Incorporate the following construction features into exterior wall assembly:

- A. **SHEATHING** – Install 1/2 in. thick DensGlass® Gold Sheathing gypsum perpendicular to steel studs. Attach using # 6, Type S screws, 1-1/4 in. long, spaced 8 in. oc around the perimeter and 12 in. oc in the field.
- B. **ANCHORS** – Install HOHMANN & BARNARD INC. 3-1/2 in. X-Seal HDG brick ties, spaced 24 in. oc, vertically on each steel stud, securing them through sheathing using # 14, 5 in. long HOHMANN & BARNARD INC. polymer-coated screws with washer.

C. **EXTERIOR WALL INSULATION:**

CERTIFIED PRODUCT: Heatlok® HFO Closed Cell Spray Foam Insulation

Install Heatlok® HFO spray polyurethane foam insulation, applied over the sheathing, at a thickness of 3-1/2 in. ± 0.28 in., and with max. density of 2.0 pcf.

- 4. **JOINT COMPOUND:** (Not Shown) Vinyl or casein, dry or premixed, joint compound applied to face layers of gypsum board in two coats, to all exposed fastener heads and gypsum board joints.
- 5. **BRICK FINISH:** Install nominal 4 in. clay brick (5-5/8 in. × 2-1/4 in. × 7-5/8 in.) laid in a running bond pattern. Use Type S mortar, leaving a nominal 2 in. wide air gap between the brick and the exterior wall insulation. Install nominal 4 in. × 94 in. angle steel lintel over the window, expanding 8 in. past the window jamb. Cover the window header, lambs, and sill with 0.090 in. thick aluminum flashing.

Consult the listing report on the Directory of Building Products (<https://bpdirectory.intertek.com>) for the edition of the standard(s) evaluated.