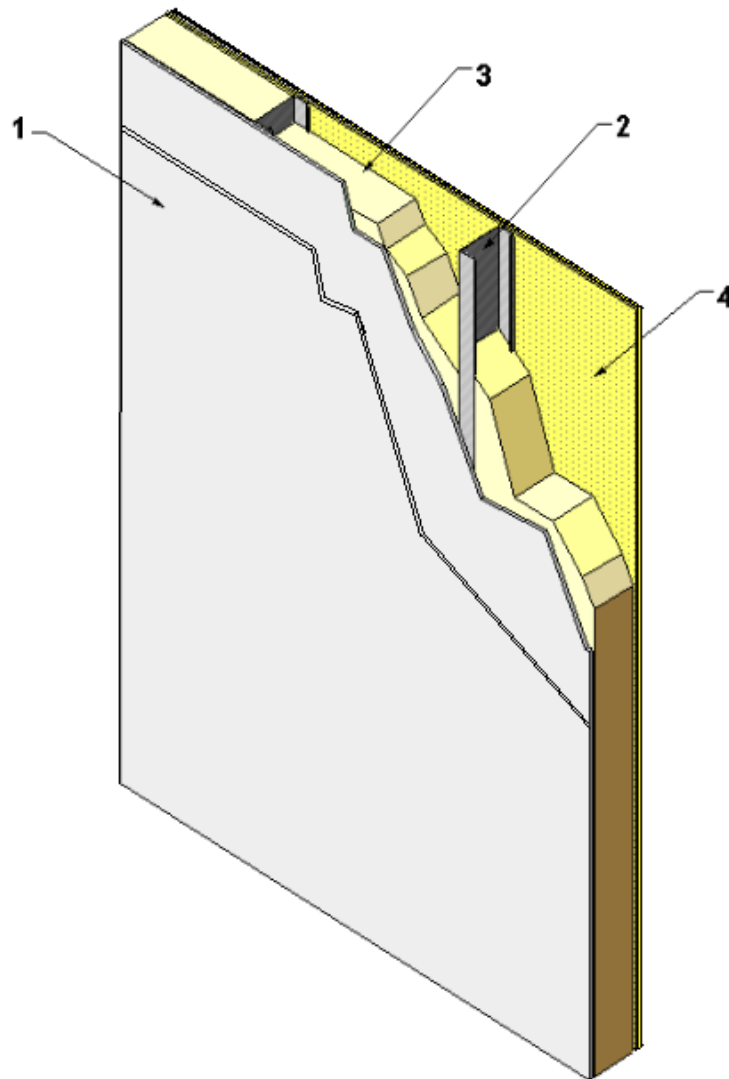

Huntsman Building Solutions (USA) LLC
Design No. HBS/FI 60-05
Load Bearing Wall Assembly
HEATLOK® HFO Closed Cell Spray Foam Insulation
ASTM E119
Fire Resistance Rating – 1 Hour



1. GYPSUM BOARD: Two layers of 5/8 in. thick Type X gypsum board installed with long dimension perpendicular to steel studs. Attach studs with # 6, Type S, 1-1/4 in. long bulge-head screws, spaced 8 in. on center (oc) around perimeter and 12 in. the field.

2. STEEL STUDS: Min. 3-5/8 in. 20 GA steel studs. Max. spacing 24 in. oc. Secure steel studs to top and bottom track using 1/2 in. long pan-head framing screws. Install lateral braces (not shown) 60 in. vertically oc. Secure bracing with # 8, 1/2 in. long pan-head framing screws.



3. INTERIOR WALL INSULATION:

CERTIFIED PRODUCT: Heatlok® HFO
Polyurethan Foam Insulation

Install a full cavity fill, 2.0 pcf density, of Heatlok® HFO polyurethane foam to completely fill the steel stud cavity.

4. JOINT COMPOUND: (Not Shown) Vinyl or casein, dry or premixed, joint compound applied to face layers of gypsum board in two coats, to all exposed fastener heads and gypsum board joints.

5. EXTERIOR SHEATHING: Install two layers of 5/8 in. thick, GP DensGlass® Exterior Sheathing over the exterior side of the steel studs using 1-7/8 in. self-tapping screws, spaced at 8 in. oc on the perimeter and 12 in. oc in the field.

Consult the listing report on the Directory of Building Products (<https://bpdirectory.intertek.com>) for the edition of the standard(s) evaluated.