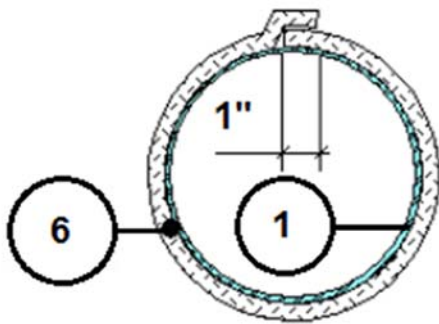
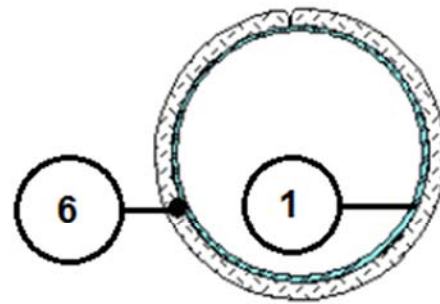

3M Company
Design No. 3MU/DI 60-04
Firestop System
3M™ Fire Barrier™ Dryer Ventilation Wrap (DVW)
ASTM E2816-18b
Condition B – 60 minutes
ASTM E814-13a (2017)
Test Pressure Differential – 2.5 Pa (0.01 in. of water)
T- Rating 60 minutes; F-Rating 60 minutes



Overlap Joint Installation for Round Ducts



Compressed Butt Joint Installation for Round Ducts

Figure 1. 3M™ Fire Barrier™ Dryer Ventilation Wrap

- 1. DUCT:** Reference Figure 1. Use SMACNA compliant ventilation duct for vertical or horizontal installation and meeting the following requirements:

- Steel Gauge: Min. 26 GA
- Shape: Round (straight seam or spiral seam)
- Dimensions: Max. 7 in. diameter.
- Joint Treatment: Apply silicone sealant to all joints, or alternatively apply 3M™ 1525CW FSK Facing Tape to all joints.
- Installation: Duct installed vertically through the supporting construction (Item 2) or offset within the joist cavity using SMACNA compliant, min. 26 GA steel elbows or fittings.

Rigidly support the duct in accordance with IMC, SMACNA or NFPA 90A requirements designed to

carry the weight of the insulated duct under a fire load equivalent to a 60-minute exposure of the ASTM E119 time-temperature curve.

- 2. SUPPORTING CONSTRUCTION:** Use min. 60-minute fire resistance rated floor/ceiling assembly meeting the following minimum requirements:

- Overall Floor Depth: Min. 10-5/8 in.
- Framing: Min. 2 in. x 10 in. solid sawn wood joists
- Flooring Type: Min. ¾ in. wood.
- Ceiling Membrane: One layer, 5/8 in. thick gypsum board. See corresponding listed fire resistance rated designs for approved manufacturers and models.



3. HORIZONTAL SUPPORTS: Support the duct portion within the floor/ceiling air cavity in accordance with IMC, SMACNA or NFPA 90A requirements designed to carry the weight of the insulated duct under fire load equivalent to a 60-minute exposure of the ASTM E119 time-temperature curve.

4. THROUGH-OPENING: Refer to Figure 2. Create a circular through-opening in the supporting construction (Item 2) sized 1-1/2 inches greater in diameter than the corresponding outside duct (Item 1) dimensions. Position the insulated duct (Item 1) concentrically within the through-opening.

5. FILL, VOID OR CAVITY MATERIAL – Apply one of the materials listed below to fill the annular space created between the insulated duct (Item 1) and the supporting construction (Item 2), specifically at the gypsum ceiling membrane and at the wood floor membrane.

CERTIFIED MANUFACTURER: 3M Company

CERTIFIED PRODUCT: Firestop Sealant

CERTIFIED MODELS: 3M™ Fire Barrier™ IC 15WB+ or 3M™ Fire Barrier™ CP 25WB+

6. CERTIFIED MANUFACTURER: 3M Company

CERTIFIED PRODUCT: Dryer Ventilation Wrap

CERTIFIED MODEL: Nominal 1/2 in. thick, nominal 8 pcf, 3M™ Fire Barrier™ Dryer Ventilation Wrap (DVW)

DUCT INSULATION: Install one layer of 3M™ Fire Barrier™ Dryer Ventilation Wrap (DVW) around the full length of the duct (Item 1) and through the supporting construction (Item 2). Use compressed

butt joints (min. 1 in. compression) or min. 1 in. overlap joints. Secure the insulation with min 0.047 in. stainless steel wire, max. 12 in. on center (oc). For transverse overlap joints, center the wire on the overlap. For transverse butt joints position the wire 1/2 in. from each side of the compressed transverse butt joints. Tape all joints with 3M™ 1525CW FSK Facing Tape.

7. FIRESTOP SUPPORT: Refer to Figure 2. Use min. 1-1/2 in. x 1-1/2 in. x 1/8 in. steel angles. Ensure the angles are min. 4-1/2 in. longer than the duct (Item 1) diameter and center these on opposite sides of the duct over the Duct Insulation (Item 6) and Firestop Collar (Item 8). Fasten the angles to the supporting construction (Item 2) with min. No. 10 screws of the appropriate type for the underlying construction; use one screw on each side. Fasten the angles to the insulated duct (Item 1) with min. No. 10 self-drilling hex-head or panhead steel screws. Use one screw on each side of the duct (Item 1).

8. FIRESTOP COLLAR: Refer to Figure 2.

CERTIFIED MANUFACTURER: 3M Company

CERTIFIED PRODUCT: Dryer Ventilation Wrap

CERTIFIED MODEL: Nominal 1/2 in. thick, nominal 8 pcf, 3M™ Fire Barrier™ Dryer Ventilation Wrap (DVW)

Install a min. 12 in. long, 3M™ Fire Barrier™ Dryer Ventilation Wrap (DVW) collar on the top side of the supporting construction (Item 2). Secure the collar with min. 0.047 in. stainless steel wire, positioned 1-1/2 in. from the bottom of the collar and 1 in. from the top of the collar. Tape the top of the collar to the Dryer Ventilation Wrap (Item 6) with 3M™ 1525CW FSK Facing Tape.

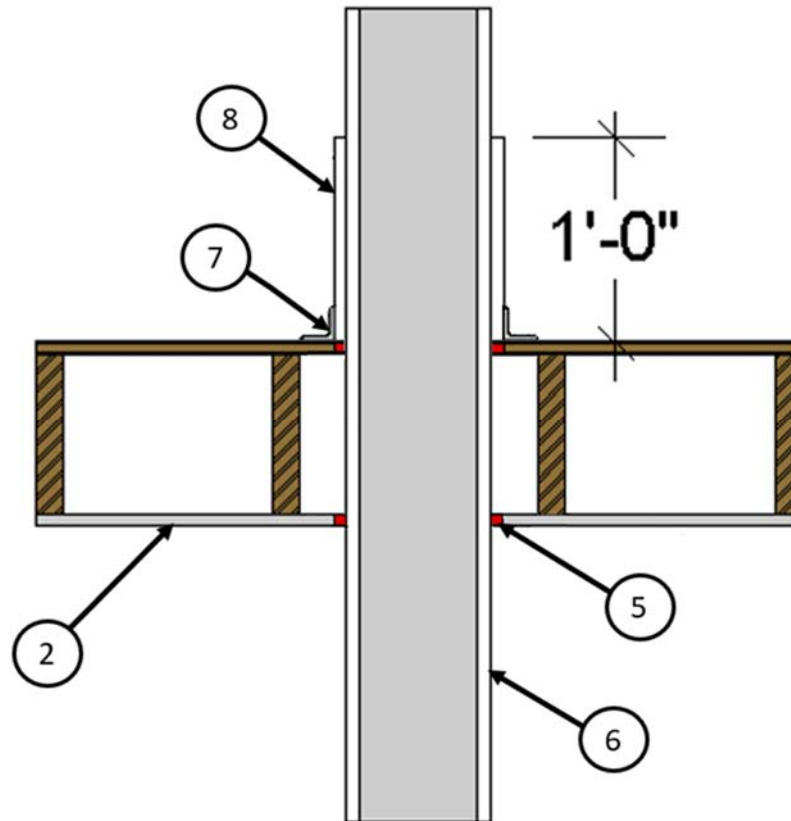


Figure 2. Firestop Details

Consult the listing report on the Directory of Building Products (<https://bpdirectory.intertek.com>) for the edition of the standard(s) evaluated.