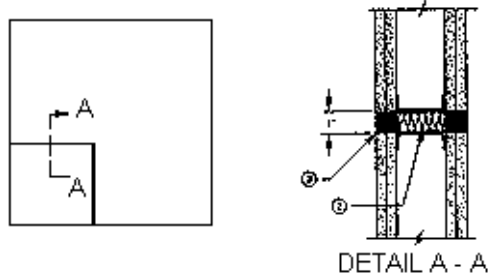


DESIGN NO. TRC/PV 126-01
VERTICAL (WALL), F & T RATINGS - 2 HRS, 6 MINUTES
TEST PRESSURE DIFFERENTIAL - 2.5 Pa (0.01" OF WATER) MINIMUM



Manufacturer's Designation: 950 GW-12.

1. Wall: Nominal 5" thick steel stud and gypsum drywall partitions; Minimum 2 hr fire rating; Maximum Size of Wall Opening - 1 diameter.
2. Insulation: 2-1/2" by 1" Mineral Wool.
3. Caulking Compound or Filler Material: Minimum thickness 1-1/4" Metalines, Inc. Metacaulk* 950.

*Component bearing the Warnock Hersey Certification Mark