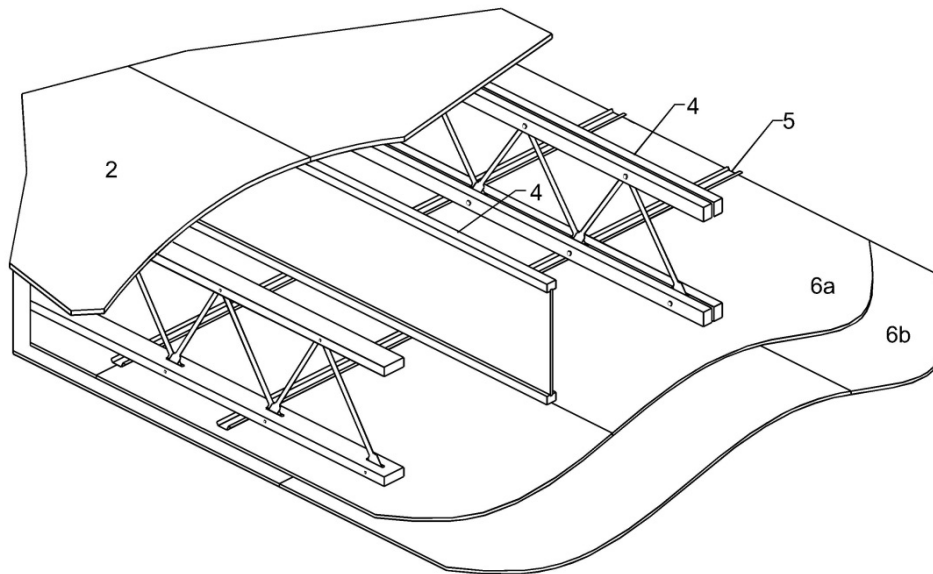

Design Number RBL/SFWT 60-01
REDBUILT OPEN-WEB TRUSS & RED-I JOIST SERIES

RedBuilt LLC
ASTM E119 and CAN/ULC S101
Load Bearing Fire Resistance Rated Roof/Ceiling, Floor/Ceiling Assembly
60-Minute Rating



1. FLOOR TOPPING (Optional, not shown): Gypsum concrete, lightweight or normal concrete topping. When used as a roof assembly, materials for a built-up roof covering that are described in an assembly that provides a Class A, B, or C rating on combustible wood decks may be used.

2. FLOOR SHEATHING: Min. 5/8 in. thick wood sheathing, designed and installed per code requirements. When used as a roof assembly, min. 1/2 in. thick wood sheathing may be used, when designed and installed per code requirements.

3. INSULATION (Optional, not shown): When installed, insulation shall be installed above the joist flanges and supported by stay wires spaced a min. of 12 in. On Center (oc).

4. CERTIFIED COMPANY: RedBuilt LLC

CERTIFIED PRODUCT: Shop fabricated wood trusses

CERTIFIED MODELS:

RED-I JOIST SERIES: RED-I45L, RED-I53, RED-I58, RED-I45, RED-I65, RED-I90, RED-I90H and RED-I90HS.

OPEN-WEB TRUSS SERIES: RED-L, RED-W, RED-S, RED-M and RED-H.

9-1/4 in. min. deep joists spaced a max. of 24 in. oc. Installed in accordance with the Code. The max. spacing may be increased to 48 in. oc when the ceiling is applied to stripping spaced a max. of 24 in. oc. The stripping must be a nominal 2 X 4, construction-grade lumber attached to the

bottom flange of the joists using two 10d nails.

5. RESILIENT CHANNELS (Optional): Min. 0.019 in. thick galvanized steel resilient channel attached perpendicular to the bottom flange of the joists with one 1-1/4 in. drywall screw. Channels spaced a max. of 16 in. oc. The max. channel spacing may be increased to 24 in. oc when joists are spaced a max. of 16 in. oc.

6. GYPSUM WALLBOARD: Two layers of min. 1/2 in. Type X gypsum wallboard attached with the long dimension perpendicular to the resilient channels (or joists) as follows:

6a. Wallboard Base Layer: Base layer of wallboard attached to resilient channels (or joists) using 1-1/4 in. type S drywall screws at 12 in. oc. When resilient channels are installed, edge joints shall be centered on joists. End joints of wallboard staggered a min. of one channel (or joist) spacing.

6b. Wallboard Face Layer: Face layer of wallboard attached to resilient channels (or joists) through base layer using 1-5/8 in. Type S drywall screws spaced 12 in. oc. Edge joints of wallboard face layer offset a min. distance equal to the joist spacing, from those of base layer. End joints shall be offset from base layer joints by a min. of one channel (or joist) spacing and shall be centered in-between channel (or joist) spacings. Additionally, wallboard face layer attached to base layer with 1-1/2 in. Type G drywall screws spaced 8 in. oc, placed 1-1/2 in. from face layer end joints.

7. FINISH SYSTEM (not shown): Face layer joints covered with tape and coated with joint compound. Screw heads covered with joint compound.