

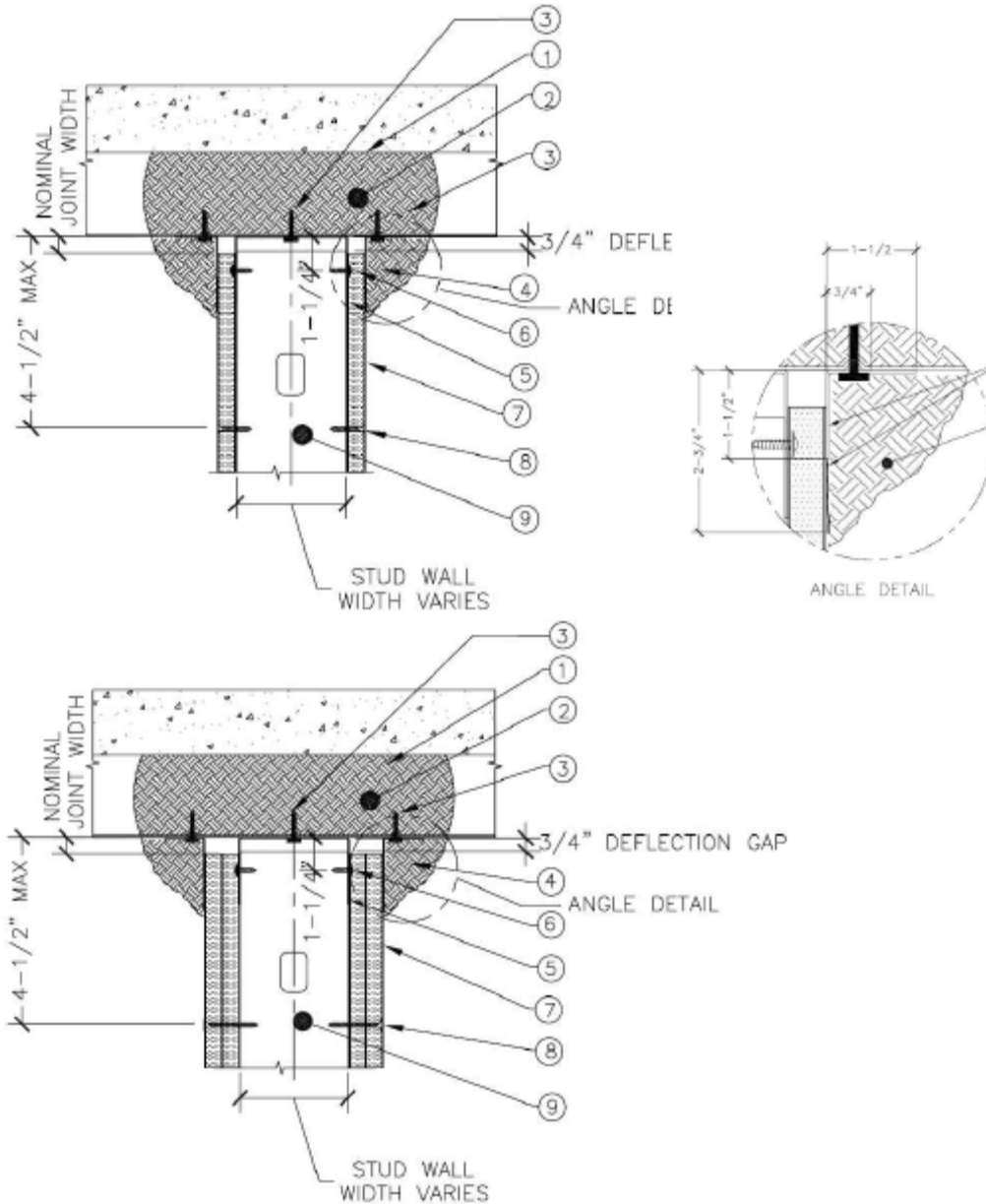
Design No. CEM/JS 120-04

CEMCO HEAD OF WALL JOINT SYSTEM

RATINGS: ASTM E814, UL 2079 - 2 HRS F,T

Joint Movement – 1/2" Maximum Compression and Extension, 500 Cycles

Furnace Pressure Differential - 2.5 Pa (0.01 inches water column)



1. **Floor/Ceiling Assembly:** Concrete assembly bearing a 2-Hour fire resistance rating
2. **Sprayed Protection:** Grace Construction Products "Monokote MK-6", or Isolatek International "CAFECO 300" or "Blaze Shield II", spray applied protection. Flutes may be filled either with sprayed protection, or with 4PCF density rockwool insulation.
3. **Slotted Track Fastener:** Type 0, 0.145 X 1" power actuated fastener, installed at 16" OC maximum.
4. **Firestop Component*:** CEMCO mesh angle, minimum 25 gauge, 1 ½" x 2 ¾", or 1 ½" x 1 ½" minimum.
5. **Slotted Track:** CEMCO Slotted Track (CST) Minimum 25 gauge steel, Minimum width 2 ½".
6. **Stud Fastening Screws:** Waferhead framing screw, No. 8 by 9/16" long.
7. **Gypsum Wallboard:** One or two layers of 5/8" Type X gypsum wallboard forming a 1 Hour or 2 Hour rated wall assembly.
8. **Drywall Screws:** No. 6 x 1-1/4" bugle head Type S wallboard screws located 12" on centers max., and top screw is located 3 ½" from slab.
9. **Wall Studs:** CEMCO Min. 25 gauge steel stud, minimum width 2 ½".

***Component Bearing the WHI Listing Mark.**