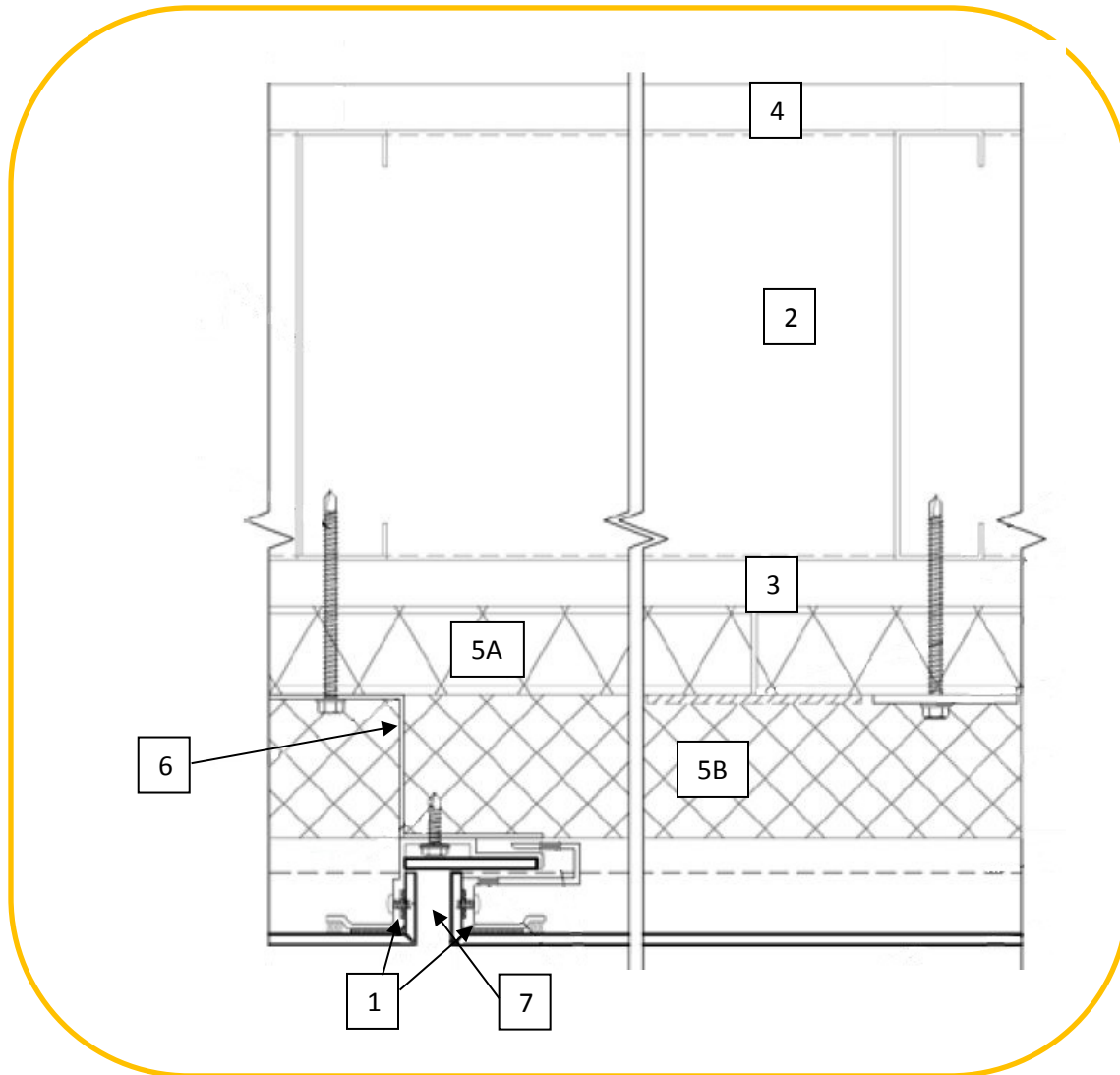


**NOW Specialties, Inc**  
**Design No. NSI/MCMWP 30-01**  
**Exterior Wall Systems**  
**NOW 8000 MCM PANEL**  
**NFPA 285**  
**Rating: Meets the Conditions of Acceptance**





1. **CERTIFIED MANUFACTURER:** NOW Specialties, Inc

**CERTIFIED PRODUCT:** MCM PANEL

**CERTIFIED MODEL:** NOW 8000

NOW-8000 2 in. aluminum base extrusions installed horizontally over vertical z-girts to allow for mounting of the bottom row of wall panels using 1 in. hex head self-drilling screws. The wall panels are 0.16 in. (4 mm) thick, FR Core Alpolc or equivalent aluminum composite panels. Subsequent panels are installed by attaching the perimeter male extrusions to the vertical z-girts with a ½ in. joint space between wall panels with the same joint space at both horizontal and vertical joints.

2. **NON-LOADBEARING WALL ASSEMBLY:** Construct a non-loadbearing wall assembly that shall comply with the local building code or other applicable regulatory requirements as established by the local Authority Having Jurisdiction.
3. **BASE WALL EXPOSED SIDE SHEATHING:** 5/8 in. thick 4 ft.× 8 ft. Type X glass mat sheathing (ASTM C1177 compliant), installed with the long dimension perpendicular to the studs using #6 × 1-1/4 in. long self-tapping bugle head screws at 8 in. o.c. on the perimeter and 12 in. o.c. in the field.
4. **BASE WALL UNEXPOSED SIDE CLADDING:** 5/8 in. thick 4 ft.× 8 ft. Type X gypsum board (ASTM C1396 compliant), installed with the long dimension perpendicular to the other steel studs using #6 × 1-1/4 in. long self-tapping bugle

head screws at 8 in. o.c. on the perimeter and 12 in. o.c. in the field.

## 5. **INSULATION:**

- A. **Exterior Wall Continuous Insulation:** 1-1/4 in. thick glass fiber foil faced on both sides R-Value 8.3 insulation (ASTM C1289 compliant) installed onto wall using 3 in. bugle head self-drilling fasteners and 2 in. diameter solid cap washers. Each fastener/washer combination and insulation board joint covered by a 3.5 in. wide piece of aluminum tape.
  - B. **Z-girt Cavity Insulation:** 2 in. thick semi-rigid mineral fiber insulation board 4.4pcf density (ASTM C612 compliant) installed into Z-girt cavities.
6. **WALL Z-GIRTS:** 16 GA × 2 in. Z-girts installed vertically 16 in. o.c. spacing to hold insulation layer and to attach 4 mm ACM panels.
  7. **WALL VERTICAL AND HORIZONTAL JOINTS:** ½ in. wall panel joints installed so that the vertical joint on the wall assembly coincides with the centerline of the window opening and the first horizontal joint above the window opening is at 18 in.
  8. **OPENINGS:** (Not Shown) The perimeter of the opening must be finished with 0.40 in. thick aluminum flashing flush with the exterior edge of the panels and with a 2 in. leg within the interior side of the window opening.