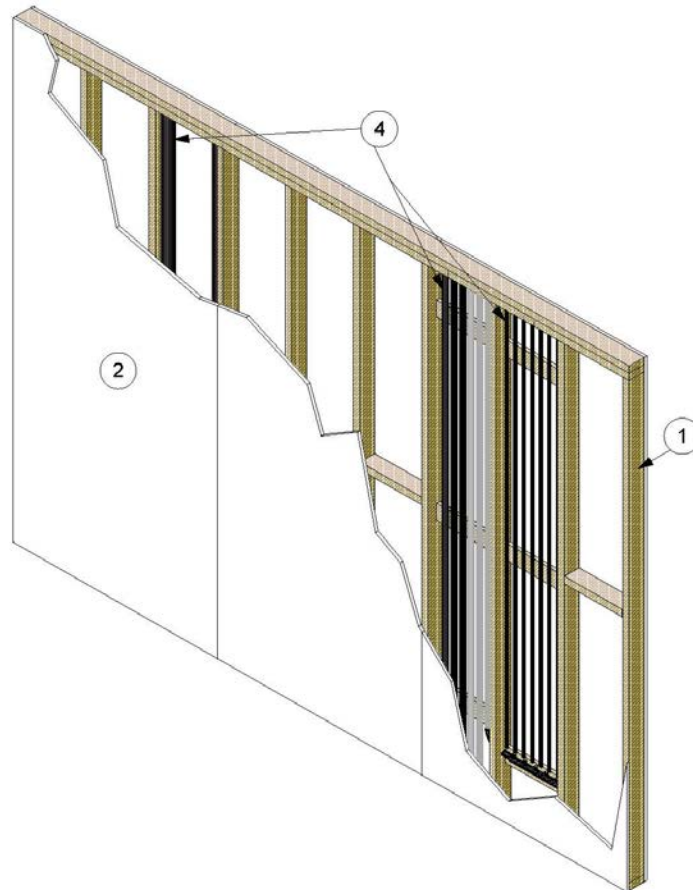

Viega LLC
Design No. VL/FWDP 60-01
Wall Assembly

Viega PureFlow System, ViegaPEX Barrier, Viega PureFlow PEX, and Viega FostaPEX
ASTM E 119-12, CAN/ULC S101-07, UL 263, NFPA 251, and UBC 7-1
2005 NDS Restricted Load – Max. 78% of full design load per stud
CSA-O86-09 Restricted Load – Max. 76% of full design load per stud
Rating: 1 Hour



- 1. FRAMING:** Install nominal 2 × 4 in. wood studs spaced max. 16 in. on center (oc) between a top plate consisting of two nominal 2 × 4 in. wood studs and one nominal 2 × 4 in. bottom plate. Attach each stud to top and bottom plates using 16d framing nails. Install nominal 2 × 4 in. lumber cut to fit in the stud cavity bracing at mid-height of wall. Install additional bracing max. 42 in. oc in stud cavities with PEX tubing (Item 4) as supports for the PEX tubing.
- 2. GYPSUM BOARD:** Install one layer of nominal 5/8 in. thick Type X gypsum board, oriented vertically. Secure gypsum board to framing (Item 1) using nominal 1-7/8 in. long Type W drywall screws or nominal 1-5/8 in. long cup-head drywall nails spaced nominally 6 in. oc around the perimeter and 8 in. oc around in the field.



3. JOINT TAPE AND COMPOUND: (Not Shown)
Install vinyl or casein, dry or premixed, joint compound applied to exterior face of gypsum board in two coats to all exposed fastener heads and gypsum board joints. Install min. 2 in. wide paper, plastic, or fiberglass tape embedded in the first layer of compound over joints in gypsum board.

4. CERTIFIED COMPANY: Viega LLC

CERTIFIED PRODUCT: 3/8 in. to 2 in. (9.5 mm to 51 mm) PEX Tubing

MODELS: Viega PureFlow System, ViegaPEX Barrier, Viega PureFlow PEX, or Viega FostaPEX

PEX TUBING: Install 3/8 in. through 2 in. (9.5 mm to 51 mm) nominal pipe size PEX Tubing. The max. weight of PEX tubing shall be 11 lb. or 1.3 lb. per ft. per stud cavity. Any manifolds or other accessories shall be considered as part of the total weight. Support PEX tubing to framing (Item 1).