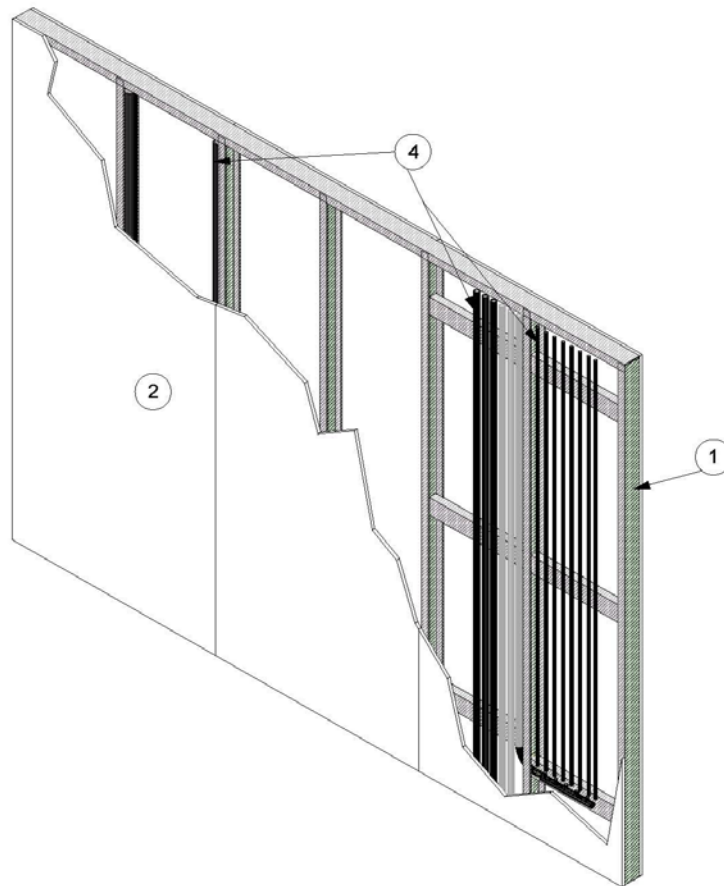


---

**Viega LLC**  
**Design No. VL/FWDP 60-02**  
**Non-Bearing Wall Assembly**  
**Viega PureFlow System, ViegaPEX Barrier, Viega PureFlow PEX, and Viega FostaPEX**  
**ASTM E 119-12, CAN/ULC S101-07, UL 263, NFPA 251, and UBC 7-1**  
**Rating: 1 Hour**

---



- 1. FRAMING:** Install channel shaped min. 25 GA 3-5/8 in. deep galvanized steel studs cut 3/8 in. shorter than assembly height, spaced max. 24 in. on center (oc) friction fit into a top and bottom channel shaped min. 25 GA 3-5/8 in. deep track. Top and bottom track shall be attached to floor and ceiling with fasteners spaced max. 24 in. oc. Install bracing max. 42 in. oc in stud cavities with PEX tubing (Item 4) as supports for the PEX tubing.
- 2. GYPSUM BOARD:** Install one layer of nominal 5/8 in. thick Type X gypsum board, oriented vertically. Secure gypsum board to framing (Item 1) using nominal 1-5/8 in. long Type S self-tapping drywall screws spaced nominally 6 in. oc around the perimeter and 8 in. oc around in the field.
- 3. JOINT TAPE AND COMPOUND:** (Not Shown) Install vinyl or casein, dry or premixed, joint compound applied to exterior face of gypsum board in two coats to all exposed fastener



heads and gypsum board joints. Install min. 2 in. wide paper, plastic, or fiberglass tape embedded in the first layer of compound over joints in gypsum board.

**4. CERTIFIED COMPANY:** Viega LLC

**CERTIFIED PRODUCT:** 3/8 in. to 2 in. (9.5 mm to 51 mm) PEX Tubing

**MODELS:** Viega PureFlow System, ViegaPEX Barrier, Viega PureFlow PEX, or Viega FostaPEX

**PEX TUBING:** Install 3/8 in. through 2 in. (9.5 mm to 51 mm) nominal pipe size PEX Tubing. The max. weight of PEX tubing shall be 11 lb. or 1.3 lb. per ft. per stud cavity. Any manifolds or other accessories shall be considered as part of the total weight. Support PEX tubing to framing (Item 1).