

WARNING

If the information in this manual is not followed exactly, a fire or explosion may result causing property damage, personal injury or loss of life.

Do not store or use gasoline or other flammable vapors and liquids in the vicinity of this or any other appliance.

WHAT TO DO IF YOU SMELL GAS

- Open windows.
- Do not touch electrical switches.
- Do not try to light any appliance.
- Extinguish any open flame
- Do not use the phone in your building.
- Immediately call your gas supplier from a neighbor's phone. Follow the gas supplier's instructions.
- If you cannot reach your gas supplier, call the fire department.



We recommend that our gas hearth products be installed and serviced by professionals who are certified in the U.S. by the National Fireplace Institute® (NFI) as NFI Gas Specialists.



This appliance may be installed in an aftermarket, permanently located, manufactured home (USA only) or mobile home. This unit cannot be installed where prohibited by local codes.

This appliance is only for use with the type(s) of gas indicated on the rating plate. A conversion kit is supplied with this appliance.

In the Commonwealth of Massachusetts:

- Installation must be performed by a licensed plumber or gas fitter;
- A CO detector shall be installed in the room where the appliance is installed.

WARNING: Improper installation, adjustment, alteration, service or maintenance can cause injury or property damage. Refer to this manual. For assistance or additional information consult a qualified installer, service agency or the gas supplier.

CAUTION

THIS MANUAL IS TO REMAIN WITH THE HOMEOWNER.

CE MANUEL EST DE RESTER AVEC LE PROPRIÉTAIRE D'UNE MAISON.

AVERTISSEMENT

Assurez-vous de bien suivre les instructions donné dans cette notice pour réduire au minimum le risqué d'incendie ou pour éviter tout dommage matériel, toute blessure ou la mort.

Ne pas entreposer ni utiliser d'essence ni d'autre vaperurs ou liquides inflammables dans le voisinage de cet appereil ou de tout autre appereil.

QUE FAIRE SI VOUS SENTEZ UNE ODEUR DE GAZ:

- Ne pas tenter d'allumer appereil.
- Ne touchez à aucun interrupteur. Ne pas vous servir des telephones se trouvant dans le batiment où vous vous trouvez.
- Evacuez la pièce, le bâtiment ou la zone.
- Appelez immédiatement votre fournisseur de gaz depuis un voisin. Suivez la instructions du fournisseur.
- Si vous ne pouvez rejoindre le fournisseur de gaz, appelez le service dos incendies.

L'installation et service doit être execute par un qualifié installer, agence de service ou le fournisseur de gaz.

Cet appareil peut être installé dans une maison préfabriquée (mobile) déjà installée à demeure si les règlements locaux le permettent.

Cet appareil doit être utilisé uniquement avec les types de gaz indiqués sur la plaque signalétique. Ne pas convertir cet appareil à d'autres gaz, à moins d'utiliser une trousse de conversion certifiée.

FOR YOUR SAFETY

A qualified installer, service agency, or the gas supplier must perform installation and service.

Do not store or use gasoline or other flammable vapors and liquids in the vicinity of this or any other appliance.

WARNING

Do not operate this appliance with the glass removed, cracked or broken. A licensed technician or other qualified person should do replacement of glass.

WARNING

Do not burn wood, paper or other materials in this wall unit.

The installation must conform with local codes or, in the absence of local codes, with the current National Fuel Gas Code, ANSI Z223.1, or the current Natural Gas and Propane Installation Code, CSA B149.1

Table of Contents

SPECIFICATIONS - MODEL JP 4220	3
SAFETY AND WARNING INFORMATION.....	4
SPECIFIC REQUIREMENTS FOR THE COMMON WEALTH OF MASSACHUSETTS	5
CONGRATULATIONS.....	6
BUILDING PERMIT AND INSTALLATION INSPECTION APPROVAL REQUIREMENTS	6
GENERAL APPLIANCE SPECIFICATIONS	7
CLEARANCES TO COMBUSTIBLES FROM APPLIANCE SURFACES	8
PLANNING THE INSTALLATION.....	9
FRAMING DIMENSIONS.....	10
FRAMING AND POSITIONING	11
GENERAL INFORMATION	12
GAS SUPPLY REQUIREMENTS	13
GAS PRESSURE REQUIREMENTS	14
GENERAL INSTALLATION INSTRUCTIONS.....	15
GENERAL FLUE VENTING INSTRUCTIONS.....	16
EXTERIOR VENT LOCATIONS AND RESTRICTIONS	17
FLUE VENTING COMPONENTS IDENTIFICATION.....	18
MASTER FLUE VENTING REQUIREMENTS CHART.....	19
MINIMUM RISE HORIZONTAL TERMINATION.....	21
VERTICAL RISE HORIZONTAL TERMINATION.....	22
VERTICAL THROUGH-THE-ROOF VENTING.....	23
JP 4220 DOOR OPERATION	25
TO REMOVE DOOR.....	25
DOOR REPLACEMENT	25
INSTALLATION CHECK OFF LIST.....	26
LIGHTING CHECK OFF LIST	26
LIGHTING AND OPERATION INSTRUCTIONS	27
TROUBLE SHOOTING THE JP-4220 FIREPLACE	28
CUSTOMER INFORMATION	29
MAINTENANCE.....	29
NATURAL TO LP GAS CONVERSION	30
NATURAL GAS TO LP GAS CONVERSION – REGULATOR SPECIFIC INSTRUCTIONS	31
NATURAL GAS TO LP GAS CONVERSION – PILOT SPECIFIC INSTRUCTIONS	32
NATURAL GAS TO LP GAS CONVERSION – MAIN ORIFICE SPECIFIC INSTRUCTIONS	33
LP GAS PRESSURE REQUIREMENTS.....	34
GENERAL WIRING DIAGRAM.....	35
REPLACEMENT PARTS.....	36
FIELD INSTALLATION ITEMS	36
PIAZZETTA DESIGN WARRANTY QUALIFICATION & SERVICE REFERENCE FORM	39
PIAZZETTA DESIGN EXTENDED LIFETIME PROTECTION AND LIMITED WARRANTY	41

SPECIFICATIONS - MODEL JP 4220

	<u>High Fire</u>	<u>- Adjustable to -</u>	<u>Low Fire</u>
BTUH. (MODEL JP 4220)	NAT. GAS	38,000	26,500
BTUH. (MODEL JP 4220)	LP GAS	38,000	26,000



NOTE: LPG OPERATION: Wall Unit is shipped with natural gas main and pilot orifices installed. L.P. orifices are included – see installation instruction for conversion to L.P.

MAIN ORIFICE(S), 0 FT. – 2000 FT. (0M – 610M): # 43 (2), Nat. Gas (1.35mm L.P. Gas)(2)

HIGH ALTITUDE, 2000 FT. - 4500 FT. (610M – 1370M) MAIN ORIFICE(S): # 43 (2), Nat. Gas (#55 L.P. Gas)(2)

See Main Orifice conversion instructions on page 37.

P4 FIREPLACE EFFICIENCY: 76.2% Natural Gas & LP (Canada)

CO-AXIAL DIRECT VENT FLUE: 5" INNER, 8" OUTER

TOTAL WEIGHT: 375 POUNDS

SAFETY: AGA CERTIFIED Thermocouple System with Remote Ignition and Modulating Control

APPLIANCE CERTIFICATION AND TESTING AGENCY

INTERTEK TESTING SERVICES, ICBO#AA647-4

Certified under ANSI Z-21.50-03 • CSA 2.22-03 & CSA 2.17-M91. Approved for bedroom and aftermarket mobile home installations.

UL307B approved for "mobile homes, after first sale of home, not for recreational vehicles."

GAS REQUIREMENTS **SUPPLY PRESSURE:** GAS INLET: 1/2" N.P.T.
NAT. GAS: **5.0" W.C.** (1.7" W.C. MIN., 3.5" W.C. MAX.)
L.P. GAS: **11.0" W.C.** (5.0" W.C. MIN., 13.0" W.C. MAX.)

APPROVED VENT SYSTEMS DURAVENT, AMERI-VENT, SECURE-VENT, SELKIRK, METAL-FAB

MINIMUM CLEARANCES TO COMBUSTIBLE CONSTRUCTION

UNIT BASE TO FLOOR	0 in. (0mm)	GLASS EDGE TO ADJACENT SIDEWALL	16 in. (407mm)
UNIT TO ENCLOSURE SIDEWALL	2-1/4 in. (58mm)	VENT PIPE TOP TO COMBUSTIBLES	2 in. (51mm)
UNIT TO ENCLOSURE BACK WALL	3-1/2. (89mm)	VENT PIPE SIDES TO COMBUSTIBLES	1 in. (25mm)
UNIT TOP TO ENCLOSURE CEILING	31 in. (787mm)	VENT PIPE BOTTOM TO COMBUSTIBLES	1 in. (25mm)
UNIT TOP TO ROOM CEILING	31 in. (787mm)		

THIS FIREPLACE INCLUDES A SEALED COMBUSTION SYSTEM, CERAMIC LINED FIREBOX, NEO-CERAM GLASS, REMOTE PIEZO IGNITER, AND AGA CERTIFIED SAFETY SYSTEM.

OPTIONS: DECORATIVE FRONTS, TEN (10) PIECE LOG SET AND COALS, WHITE STONE BURNING MEDIA, GLACIAL ICE CUBES.

NOTE: This installation must conform to local codes. In the absence of local codes, you must comply with the **National Fuel Gas Code, ANSI Z223.1-latest edition** in the U.S.A. and the Natural Gas and Propane Installation Code, **CSA B149 Installation Codes** in Canada.

WARNING: Do not operate this appliance with the glass removed, cracked or broken. A licensed or qualified person should do replacement of glass.

This appliance may be installed in an aftermarket, permanently located, manufactured home (USA only) or mobile home. This unit cannot be installed where prohibited by local codes.

This appliance is only for use with the type(s) of gas indicated on the rating plate. A conversion kit is supplied with this appliance.

Cet appareil peut être installé dans une maison préfabriquée (mobile) déjà installée à demeure si les règlements locaux le permettent.

Cet appareil doit être utilisé uniquement avec les types de gaz indiqués sur la plaque signalétique. Ne pas convertir cet appareil à d'autres gaz, à moins d'utiliser une trousse de conversion certifiée.

AVERTISSEMENT : N'actionnez pas cet appareil le verre étant coupé, fendu ou cassé. Une personne autorisée ou qualifiée devrait faire le remplacement du verre.

THIS MANUAL IS TO REMAIN WITH THE HOMEOWNER.

CE MANUEL EST DE RESTER AVEC LE PROPRIÉTAIRE D'UNE MAISON.

SAFETY AND WARNING INFORMATION

READ and UNDERSTAND all instructions carefully before starting this appliance. **FAILURE** to follow these instructions may result in a possible fire hazard and will void the warranty.

Any safety screen or guard removed for servicing must be replaced before operating this appliance.

DO NOT USE this appliance if any part has been under water. Immediately **CALL** a qualified service technician to inspect the appliance and to replace any part of the control system and any gas control which has been underwater.

THIS UNIT IS NOT FOR USE WITH SOLID FUEL.

Installation and repair should be **PERFORMED** by a qualified service person. The appliance and venting system should be **INSPECTED** before initial use and at least once annually by a professional service person. More frequent cleaning may be required due to excessive lint from carpeting, bedding, material, etc. It is **IMPERATIVE** that the unit's control compartment, burners, and circulating air passageways **ARE KEPT CLEAN** to provide for adequate combustion and ventilation.

Always **KEEP** the appliance clear and free from combustible materials, gasoline, and other flammable vapors and liquids.

NEVER OBSTRUCT the flow of combustion and ventilation air. Keep the front of the appliance **CLEAR** of all obstacles and materials for servicing and proper operation.

Due to high temperature, the appliance should be **LOCATED** out of traffic areas and away from furniture and draperies. Clothing or flammable material **SHOULD NOT BE PLACED** near the appliance.

Children and adults should be **ALERTED** to the hazards of high surface temperature and should **STAY AWAY** to avoid burns or clothing ignition. Young children should be **CAREFULLY SUPERVISED** when they are in the same room as the appliance.

This unit **MUST** use one of the vent systems described in the Installing Your Wall Unit section of the Installers Guide. **NO OTHER** vent systems or components **MAY BE USED**.

This gas wall unit and vent assembly **MUST** be vented directly to the outside and **MUST NEVER** be attached to a chimney serving a separate solid fuel-burning appliance. Each gas appliance **MUST USE** a separate vent system. Common vent systems are **PROHIBITED**.

If the vent-air intake system is disassembled for any reason, reinstall according to the instructions provided for the initial installation.

The vent system assembly for this wall unit must be periodically examined by a qualified service agency.

INSPECT the external vent cap on regular basis to make sure that no debris is interfering with the airflow. The flow of combustion and ventilation air is not to be obstructed.

DO NOT ABUSE the glass door by striking the glass, slamming the door shut, etc.

USE only authorized parts and materials obtained from JOPI, Inc. when replacing defective or damaged glass. **Usage of Non-OEM parts and materials is strictly prohibited and will void the warranty.** Usage of substitute components may cause a fire hazard resulting in property damage or potentially fatal injuries.

DO NOT USE abrasive cleaners on the glass door assembly. **DO NOT ATTEMPT** to clean the glass door when it is hot.

Turn off the gas before servicing this appliance. It is recommended that a qualified service technician perform an appliance check-up every 9 months and possibly more frequently depending on usage.

DO NOT place furniture or any other combustible household objects within 36 inches of the wall unit front.

Specific Requirements for the Common Wealth of Massachusetts

The information in this section applies to all installations performed in the Common Wealth of Massachusetts only.

- a) For all side wall horizontally vented gas fueled equipment installed in every dwelling, building or structure used in whole or in part for residential purposes and where the side wall exhaust vent termination is less than seven (7) feet above grade, the following requirements shall be satisfied:
 - 1. If there is no carbon monoxide detector with an alarm already installed in compliance with the most current edition of NFPA 720, NFPA 70 and the Massachusetts State Building code in the residential unit served by the side wall horizontally vented gas fueled equipment, a battery operated carbon monoxide detector with an alarm shall be installed in compliance with the most current edition of NFPA 720, NFPA 70 and the Massachusetts State Building Code.
 - 2. In addition to the above requirements, if there is not one already present, a carbon monoxide detector with an alarm and a battery back up shall be installed and located in accordance with the installation requirements supplied with the detector on the floor level where the gas equipment is installed. The carbon monoxide detector with an alarm shall comply with 527 CMR, ANSI/UL 2034 Standards or CSA 6.19 and the most current edition of NFPA 720. In the event that the requirements of this subdivision can not be met at the time of the completion of the installation of the equipment, the installer shall have a period of thirty (30) days to comply with this requirement; provided, however, that during said thirty (30) day period, a battery operated carbon monoxide detector with an alarm shall be installed in compliance with the most current edition of NFPA 720, NFPA 70 and the Massachusetts State Building Code. In the event that the side wall horizontally vented gas fueled equipment is installed in a crawl space or an attic, the carbon monoxide detector may be installed on the next adjacent habitable floor level. Such detector may be a battery operated carbon monoxide detector with an alarm and shall be installed in compliance with the most current edition of NFPA 720, NFPA 70 and the Massachusetts State Building Code.
 - 3. A metal or plastic identification plate shall be permanently mounted to the exterior of the building at a minimum height of eight (8) feet above grade directly in line with the exhaust vent terminal for the horizontally vented gas fueled heating appliance or equipment. The sign shall read, in print size no less than one-half (1/2) inch in size, "GAS VENT DIRECTLY BELOW, KEEP CLEAR OF ALL OBSTRUCTIONS"
 - 4. A final inspection by the state or local gas inspector of the side wall horizontally vented equipment shall not be performed until proof is provided that the state or local electrical inspector having jurisdiction has granted a permit for installation of carbon monoxide detectors and alarms as required above.
- (b) EXEMPTIONS: The following equipment is exempt from 248 CMR 5.08(2) (a) 1 through 4:
 - 1. The equipment listed in Chapter 10 entitled "Equipment Not Required To Be Vented" in the most current edition of NFPA 54 as adopted by the Board; and
 - 2. Product Approved side wall horizontally vented gas fueled equipment installed in a room or structure separate from the dwelling, building or structure used in whole or in part for residential purposes.
- (c) When the manufacturer of Product Approved side wall horizontally vented gas equipment provides a venting system design or venting system components with the equipment, the instructions for installation of the equipment and the venting system shall include:
 - 1. A complete parts list for the venting system design or venting system; and
 - 2. Detailed instructions for the installation of the venting system design or the venting system components.
- (d) When the manufacturer of a Product Approved side wall horizontally vented gas fueled equipment does not provide the parts for venting the flue gases, but identifies "special venting systems", the following shall be satisfied:
 - 1. The referenced "special venting system" instructions shall be included with the appliance or equipment installation instructions; and
 - 2. The "special venting systems" shall be Product Approved by the Board, and the instructions for that system shall include a parts list and detailed installation instructions.
- (e) A copy of all installation instructions for all Product Approved side wall horizontally vented gas fueled equipment, all venting instructions, all parts lists for venting instructions, and/or all venting design instructions shall remain with the appliance or equipment at the completion of the installation.

CONGRATULATIONS

You are the owner of a world-class decorative gas direct vent sealed combustion wall unit.

This elegant, highly efficient Wall Unit will be a constant source of comfort and fascination. It will be the focal point of beauty and interest in your home.

The Piazzetta Design Wall Unit is a frame of artistic beauty. Your New Piazzetta Design Wall Unit comes with a remote control which allows you to operate the fixture hands free. From the lighting of the pilot to the time you shut it down to pursue other activities this little control will make your new wall unit as convenient as your television.

Carefully read the following instructions prior to actual installation. Proper Piazzetta Design Wall Unit installation and operation will give you years of safe, trouble free comfort and enjoyment.

If you have any questions regarding installation or operation of your Piazzetta Design Wall Unit please contact your local dealer.

...CAUTION...

Due to high temperatures, the Wall Unit should be located out of traffic areas and away from furniture and draperies. Children and adults should be alerted to the hazards of high surface temperature and should stay away to avoid burns or clothing ignition. Young children should be carefully supervised when they are in the same room as the Piazzetta Design Gas Wall Unit.

Clothing or other flammable material should not be placed on or near the wall unit.

Any safety screen or guard removed for servicing an appliance must be replaced prior to operating this appliance.

Installation, repair and any adjustments to the burner must be done by a qualified service person. The appliance should be inspected before use and at least annually by a professional service person. More frequent cleaning may be required due to excessive lint from carpeting, bedding material, carbon build-up, etc. It is imperative that control compartments, burners and air passageways of the appliance be kept clean. The burner and pilot should be visually checked periodically.

DO NOT use this appliance if any part has been under water or exposed to moisture corrosion. Immediately call a qualified service technician to inspect the wall unit and replace any part of the control system and any gas control, which has been under water. DO NOT use this wall unit if the burner *does not* light immediately. Turn unit off and call a Piazzetta Design approved service person *if there is any* delay in burner light off.

It is JOPI, Inc. policy that no responsibility is assumed by the company or by any of its employees or representatives for any damages caused by an inoperable, inadequate, or unsafe condition which is the result, either directly or indirectly, of any improper operation, installation or servicing procedures.

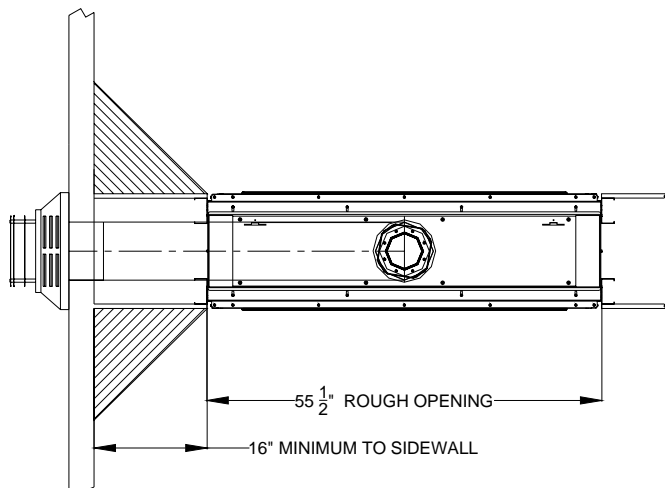
Building Permit and Installation Inspection Approval Requirements

All installations of Piazzetta Design wall units and inserts must comply with all the requirements stated in this Installation and Operating Instructions Manual. The dealer and/or installer must also obtain all required Building Permits and Inspection Approval from the local building inspection department or the local body having jurisdiction. In order to validate warranty coverage, Piazzetta Design may require facsimile copies of the Building Permit and Inspection Approval forms. Failure to provide adequate proof that the installation conforms to all local requirements and the requirements stated in the Installation and Operating Instructions Manual will void all applicable warranty.

INSTALLER: THESE INSTRUCTIONS ARE TO REMAIN WITH HOMEOWNER.
--

JP 4220 GAS DIRECT VENT FIREPLACE

GENERAL APPLIANCE SPECIFICATIONS



MINIMUM ROUGH FRAMING DIMENSIONS	
HEIGHT	43"
WIDTH	55 1/2"
DEPTH	19"
FROM UNIT TOP TO ROOM CEILING	37"

ADJACENT WALLS:

A wall perpendicular to and in front of this fireplace's edge must be at least 16 inches.

A wall at 45° to the glass surface and starting at this Wall Unit's outer edge is permitted. Projections behind this wall (in shaded area) are permitted.

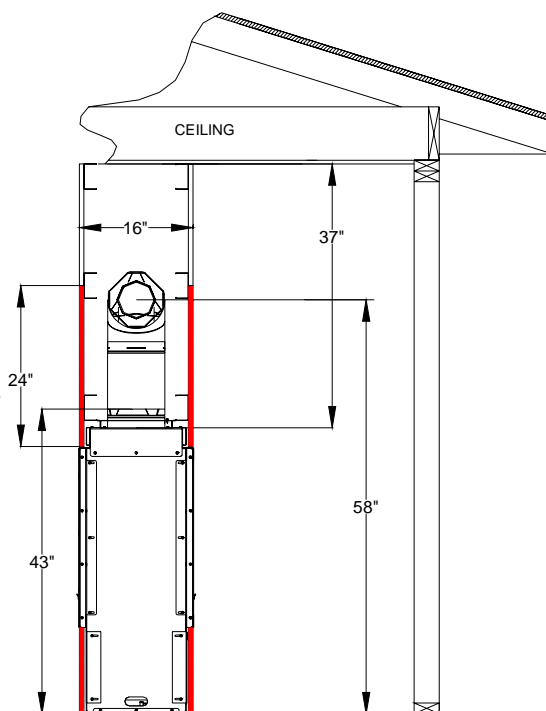
NOTES:

There is no minimum installation height for the Piazzetta Design Grace Unit, however enclosure ceiling height of 37" must be observed.

MANTEL :

A Non-Combustible Mantel may be of any size and placed at any location above the unit.

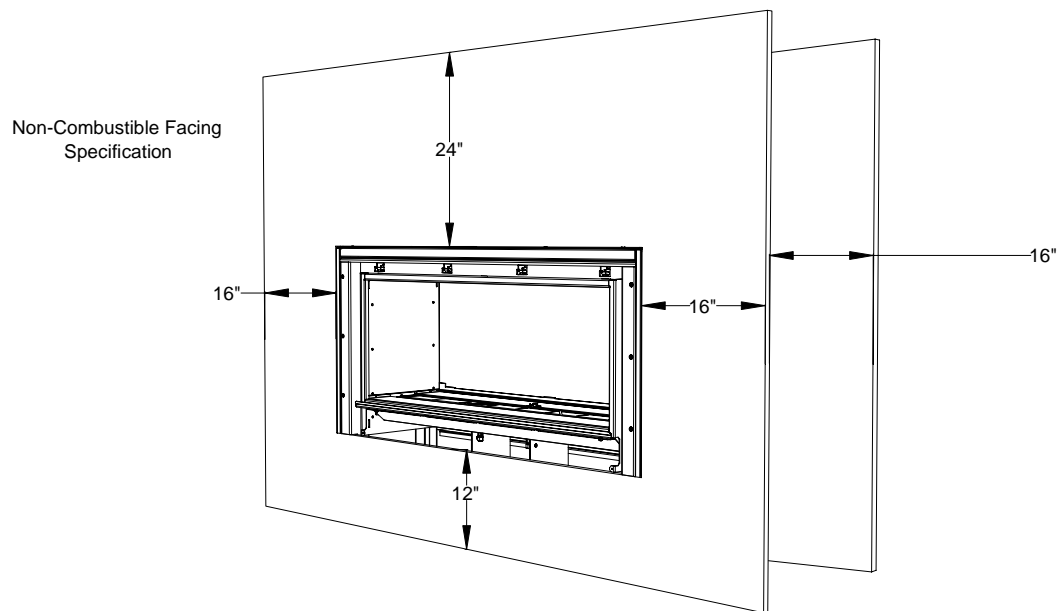
24" MINIMUM
NON-COMBUSTIBLE
FROM TOP OF UNIT'S
FRONT LEDGE, AS SHOWN.



WARNING FIRE RISK - ODOR RISK

- Install appliance on hard metal or wood surfaces extending full width and depth of this wall unit.
- Do NOT install this wall unit directly on carpeting, vinyl or any combustible material other than wood. Construct chase to all clearance specifications in manual.
- Locate and install appliance to all clearance specifications in manual.

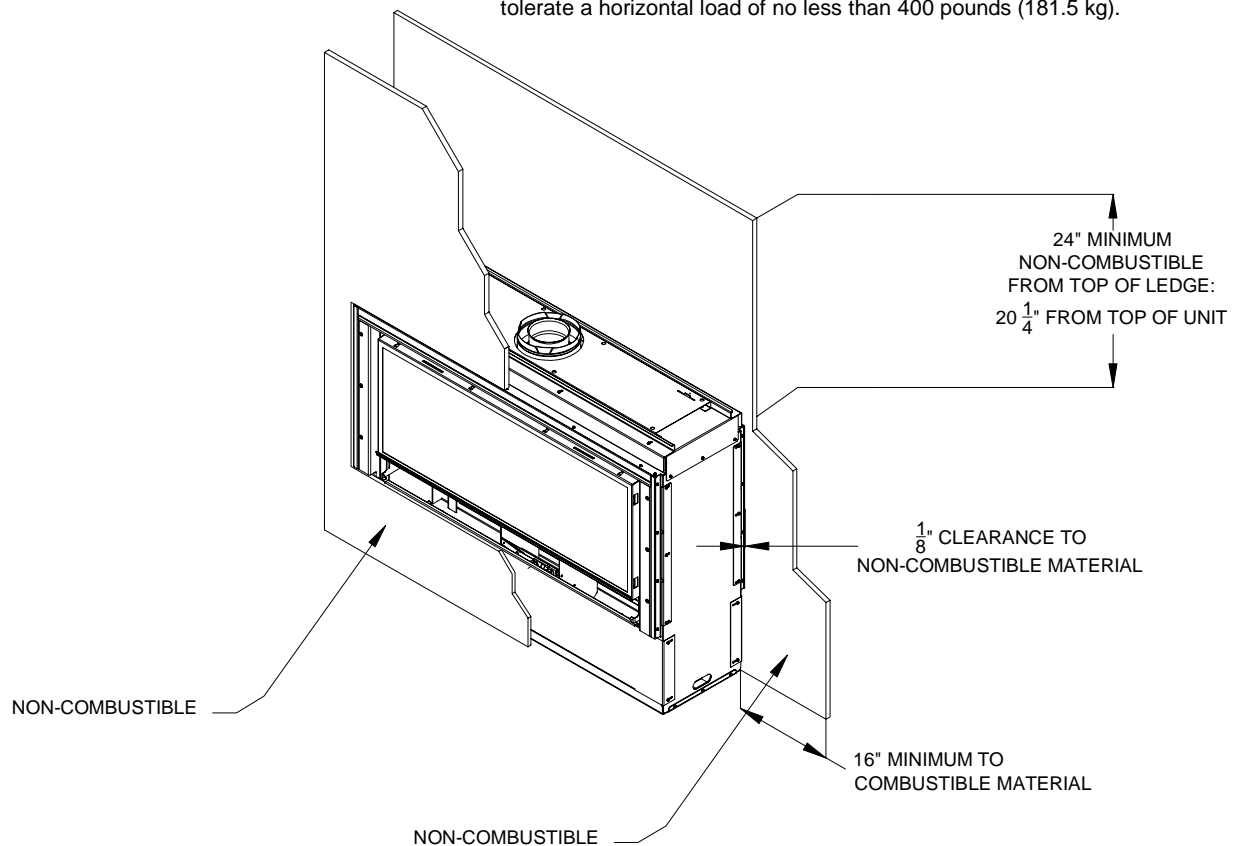
CLEARANCES TO COMBUSTIBLES FROM APPLIANCE SURFACES



FRAMING NOTES:

The sides of this wall unit must be framed in on the sides with Steel or other non-combustible support studs.

Supports under the unit may be combustible but supports must tolerate a horizontal load of no less than 400 pounds (181.5 kg).



PLANNING THE INSTALLATION

When planning on appliance installation, it is necessary to determine the following information before installing:

- Where the appliance is to be installed.
- The vent system configuration to be used.
- Gas supply piping. ***If this unit is to be used with LP Gas it should be converted at this time. (See Pages 30-32)***
- Framing and finishing details.

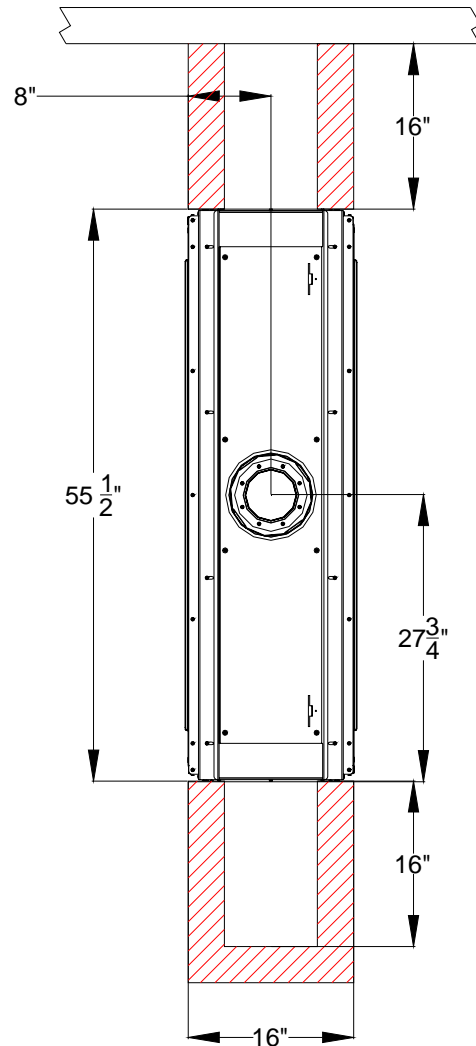
Selecting Appliance Location

When selecting a location for your appliance, it is important to consider the required clearances to walls.

DOUBLE SIDED UNITS:

Outside Dimensions for an Island or Non-Load Bearing Inner Wall Installation are as shown.

Combustible Materials MUST NOT be within 16 inches of the sides of this unit.



FRAMING DIMENSIONS

Rough Framing Height

The Rough Framing Height must be maintained to allow this wall unit and a 12 inch stack, 90-degree elbow, and 12 inch horizontal run connected directly to the top, on certain vent systems, to slide into the framing cavity. Once the wall unit is positioned inside the framed cavity, non-combustible nailer studs should be added at a minimum height of 41 inches above the platform level of this wall unit. The nailer stud will allow for securing non-combustible facing materials..

Constructing the Appliance Chase

A chase is a vertical box-like structure built to enclose this wall unit and its vent system. Vertical vents that run on the outside of a building may be, but are not required to be, installed inside a chase.

Construction of the chase may vary with the type of building. These instructions are not substitutes for the requirements of local building codes. *Always adhere to local building codes.*

Chases should be constructed in the manner of all outside walls of the home to prevent cold air drafting problems. The chase should not break the outside building envelope in any manner.

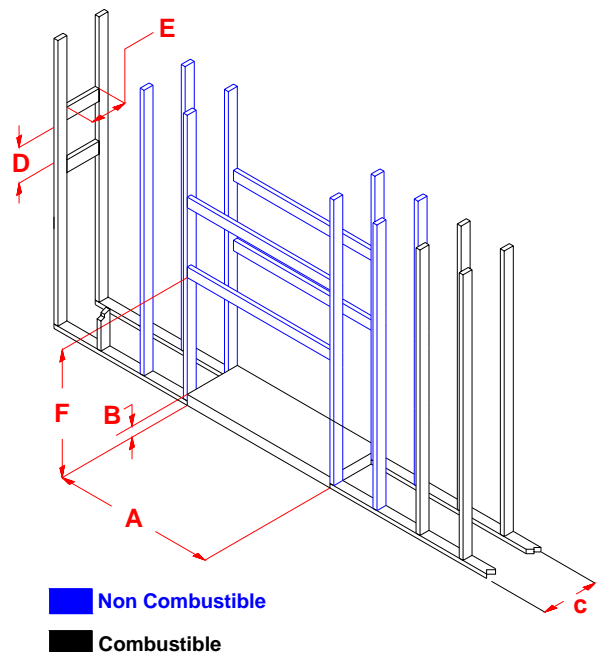
Wall, ceiling, base plate and cantilever floor of the chase should be insulated. Vapor and air infiltration barriers should be installed in the chase as per regional codes for the rest of the home. Additionally, in regions where cold air infiltration may be an issue, the inside surfaces of the chase may be sheet rocked and taped for maximum air tightness.

To further prevent drafts, the fire stops should be caulked with high temperature caulk to seal the gaps. Gas line holes and other openings should be caulked with high temp caulk (we recommend 1000° Silicate Stove Sealant *Mill-pac See Note on this product on page 36 of this manual*) or stuffed with un-faced insulation.

The dimensions of the chase which has been certified for use with this Piazzetta Design wall unit are as follows:

- A. The unit may be installed on a combustible platform however, the ceiling height of the chase or enclosure must be no less than 37 inches from the top of the unit. The platform dimensions must be at least 19 ½ inches by 55 ½ inches.
- B. Non-Combustible Studs must be used to frame in this platform and must be constructed outside its perimeter as shown in the chart above. *No combustible materials may be within 16 inches of the sides of this unit or within 24 inches above this unit.*
- C. The chase must have a ceiling with a height of no less than 77 inches from the platform on which the unit is installed, or 37 inches from the Top of the Unit.

Minimum Rough Framing Dimensions		
	DESCRIPTION	DIMENSION (INCHES)
A	Width	55 ½
B	Height	No Minimum
C	DEPTH (assumes that 3/4" thick facing material is used.)	14 ½
D	Vent opening height	11
E	Vent opening width	10
F	Platform to Nailer NC Stud	46

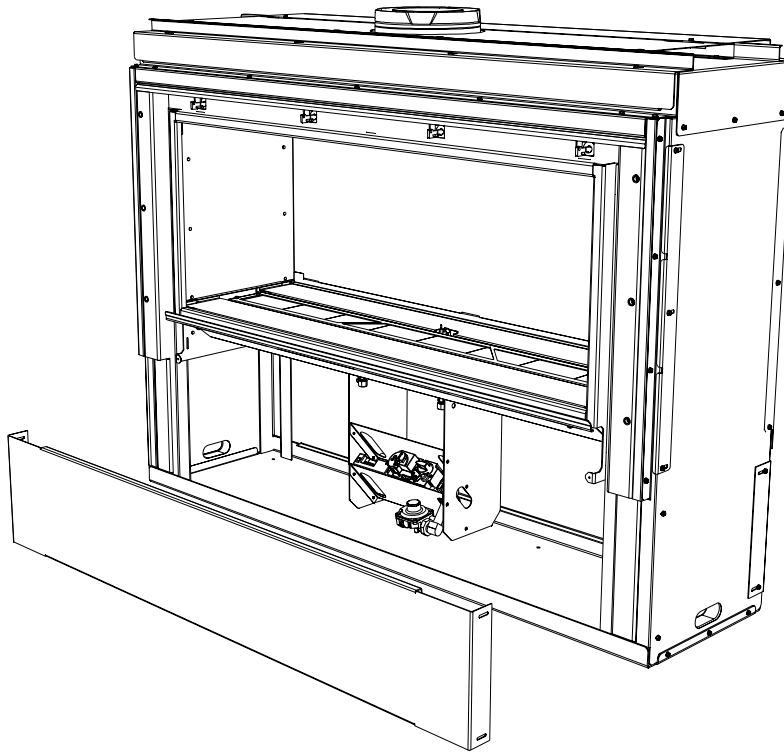


FRAMING AND POSITIONING

The platform is to be constructed as seen in this diagram.

Platform dimensions: $\frac{3}{4}$ " X 19- $\frac{1}{2}$ " X 55- $\frac{1}{2}$ "

The base of this unit has been perforated with eight lag screw locations. To access these it is advisable to remove the lower facing skirt as shown below. When the unit is in proper position use four $\frac{3}{8}$ " X 1- $\frac{1}{2}$ " Lag Screws to secure it to the platform.



Note: Correct placement of the unit is important. The facing material must be flush with the front of the unit. **The base of this unit is *one inch* behind the flush front of the unit.** The thickness of the facing material will determine the correct position of the unit.

Once the correct location of the unit has been found in regards to the wall in which it is placed and the unit has been secured, replace the facing skirt and adjust it with a small piece of the facing material which will cover the new wall. Secure the Facing Skirt.

Note: If this unit is to be used with LP Gas it should be converted at this time. (See Pages 30-32)

GENERAL INFORMATION

Your Piazzetta Design Gas Wall Unit has a state-of-the-art co-axial direct vent, sealed combustion system. This advanced and highly efficient system brings in outside air for combustion and has a separate exhaust vent encapsulated just inside of the intake. The Piazzetta Design system maintains high air quality, maximizes efficiency and assures proper operation in today's "air-tight" homes.

SAFETY AND STRUCTURAL CONCERNS:

The JP 4220 Wall Unit must be installed and serviced by a Piazzetta Design approved service person. Any adjustments to burner or the pilot must be made by a Piazzetta Design approved service person. If pilot goes out, *always* wait five (5) minutes before attempting to relight pilot.

VENTING REQUIREMENTS:

This Piazzetta Design Wall Unit must be vented using approved coaxial pipe (5" X 8") on the unit's starter collar. Use only Piazzetta Design specified vents and vent caps when installing your wall unit. Closely follow venting locations, directions and requirements. Observe the restrictions relating to vent position on exterior of home. Be sure all vent pipe sections are fully twist-locked and leak-proof.

The burners must light immediately & the flame must travel promptly and smoothly across the entire burner. The flame must not "lift" off the burner. DO NOT operate unit if burner does not light immediately or if flame lifts off the burner.

The Piazzetta Design Direct Vent Wall Unit may be placed within 16 inches of adjacent sidewalls. Non-combustible (marble, brick, stone, etc.) mantels can be installed at any desired height above the decorative facade.

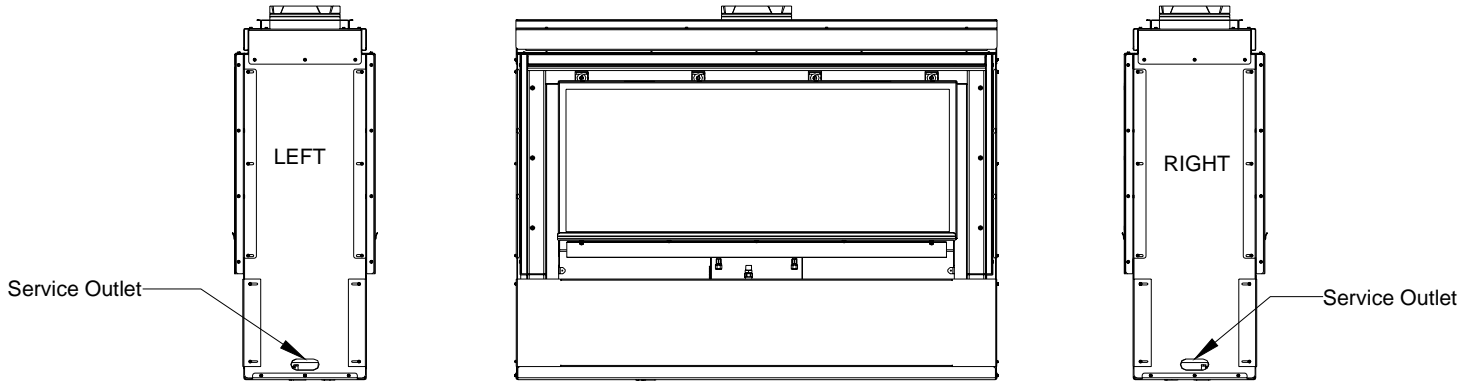
Always use Piazzetta Design decorative facades and Piazzetta Design approved vent systems and vent caps.

OPERATION DURING POWER OUTAGES

The wall unit is designed to operate during power outages.

SERVICE OUTLET LOCATIONS

For use in the next section, gas supply can be made to either side of the unit.



GAS SUPPLY REQUIREMENTS

Correct gas pressure and proper gas supply line sizing is imperative to the successful performance of your Piazzetta Design gas wall unit. Be sure the gas supplier or plumber carefully checks for correct gas pressure and gas line sizing when installing the wall unit.

- It is ***critical*** to carefully check for gas leaks when hooking up the wall unit – check with soap & water solution. ***DO NOT USE ANY IGNITION DEVICE!***
- Be sure to install “approved” flex gas line with brass-to-brass fittings to prevent gas leaks at connections.
- Gas supply piping must include a drip leg to eliminate the possibility of contaminants entering the gas train.
- Adhere strictly to local and national codes for entire installation.
- Correct gas pressure and proper gas supply line sizing is imperative to the

GAS SUPPLY LINE SIZING

The Piazzetta Design Gas Wall Unit comes equipped with a 1/2” N.P.T. Female inlet. Gas supply piping must enter the Wall Unit cabinet on the right side.

An approved manual shut-off ball valve is supplied with the wall unit. The appliance and its individual shut-off valve must be disconnected from the gas supply piping system during any pressure testing of that system at test pressures in excess of ½ PSIG (3.5 kPa).

The appliance must be isolated from the gas supply piping system by closing its manual shut-off ball valve during any pressure testing of the gas supply piping system at test pressures equal to or less than 1/2 PSIG (3.5 kPa).

A proper gas line diameter must be selected to run from the supply regulator to the Wall Unit. Refer to the following table for proper gas pipe diameters. Strictly adhere to the correct pipe sizes.

WARNING: Never use any type of pipe thread sealants or compounds on the seats of flare or compression connections.

PIPE LENGTH (FEET)	SCHEDULE 40 PIPE INSIDE DIA.		TUBING, TYPE L OUTSIDE DIA.	
	NAT.	L.P.	NAT.	L.P.
0-10	1/2” (1.3 cm)	3/8” (1.0 cm)	1/2” (1.3 cm)	3/8” (1.0 cm)
10-40	1/2” (1.3 cm)	1/2” (1.3 cm)	5/8” (1.6 cm)	1/2” (1.3 cm)
40-100	1/2” (1.3 cm)	1/2” (1.3 cm)	3/4” (2.0 cm)	1/2” (1.3 cm)
100-150	3/4” (2.0 cm)	1/2” (1.3 cm)	7/8” (2.3 cm)	5/8” (1.6 cm)
150-200	3/4” (2.0 cm)	1/2” (1.3 cm)	7/8” (2.3 cm)	3/4” (2.0 cm)
NOTE: Some areas allow coated stainless steel (CSST), copper tubing or galvanized pipe – check with local approval agencies and codes. <u>NEVER</u> use plastic pipe.				

GAS PRESSURE CHECKING REQUIREMENTS

Inlet and manifold gas pressure checking taps are located on gas valve. A qualified installer shall take pressure measurements at these ports to verify and set the correct gas pressures during initial installation.

CRITICAL: Check for gas leaks with soap and water solution.

GAS PRESSURE REQUIREMENTS

ONE MAJOR CAUSE OF OPERATING PROBLEMS WITH GAS APPLIANCES CAN BE IMPROPER GAS PRESSURE!

Problems such as changes in flame color or configuration, gas pilot or burner outages, intermittent operation, changes in heat output, excessive burner noise, etc. are nearly always the result of changes in gas pressure or improper gas pressure at the time of the installation. The most important item to check during the installation and the first thing to check when problems occur is gas pressure!

Gas supplies normally enter a residence at 1/2 PSI (13" – 15" W.C.) (3 KPA). A pressure regulator is then placed outside the residence, near the gas meter, which drops this pressure to 7" W.C. (1.8 KPA) (Nat. Gas). This "inches to inches" regulator is of adequate capacity to service the gas appliances (such as dryer, furnace, etc.). If this regulator's capacity is not sufficient to add the Gas Wall Unit, an additional "inches to inches" regulator must be installed for the Wall Unit. This wall unit is equipped with a regulator which will reduce this service to 3.5" W.C. (0.87 kPa). EXCEPTION: Some codes allow 2-PSI (1.4KPA) supplies to enter the residence, in which case "pounds to inches" regulators are used.

The following table provides information on correct gas pressure requirements. Be sure your gas supplier or plumber carefully follows this table.

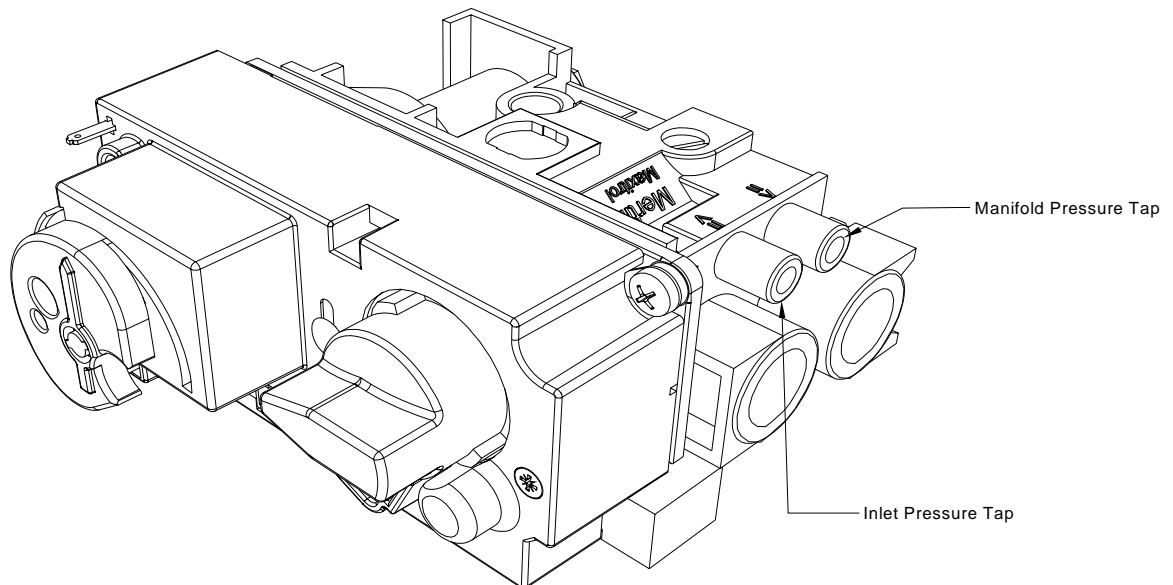
GAS PRESSURE REQUIREMENTS

	DESIRED INLET PRESSURE	MINIMUM INLET PRESSURE	MAXIMUM INLET PRESSURE	MANIFOLD OUTLET PRESSURE	AIR SHUTTER POSITION*
NATURAL GAS	7.0" W.C. (1.75 kPa)	5.0" W.C. (1.12 kPa)	13.0" W.C. (3.24 kPa)	3.5" W.C. (0.87 kPa)	1/4 " OPEN MIN. (6.5 mm)
L.P. GAS	11.0" W.C. (2.75 kPa)	11" W.C. (2.75 kPa)	13.0" W.C. (3.24 kPa)	10.0" W.C. (2.5 kPa)	3/8" OPEN MIN. (9.5 mm)

TURN FLAME TO MAXIMUM WITH REMOTE CONTROL. GAS PRESSURES MAY VARY PLUS OR MINUS 5%.

***NOTE:** For high altitude (above 2,000 feet) some variations in air shutter settings may be required. Variance of $\pm 1/16$ " is generally acceptable.

Manifold pressure must be taken at the "MANIFOLD PRESSURE" tap and inlet pressure at the "INLET PRESSURE" tap **with the burner operating** by a qualified installer.



GENERAL INSTALLATION INSTRUCTIONS

CAUTION: Each installation must conform to all local, state and national codes. Refer to the national fuel gas code and local zoning and code authorities for details on installation requirements. The Piazzetta Design Wall Unit must be vented to the outside in accordance with the latest edition of the National Fuel Gas Code. In the absence of local codes, the installation must conform to the most current edition of the National Fuel Gas Code ANSI Z223.1, also known as NFPA 54. NOTE: The Piazzetta Design JP 4220 Wall Unit is approved for mobile home and bedroom installations.

CAUTION: The Piazzetta Design JP 4220 Wall Unit may be installed in a manufactured (mobile) home after the first sale of the home. Manufactured home (mobile home) installation must conform with the Manufactured Home Construction and Safety Standard, Title 24 CFR, Part 3280, or, when such a standard is not applicable, the Standard for Manufactured Home Installations, ANSI A225.1/NFPA 501A, or CSA Z240.4-Gas Equipped Mobile Housing. Consult your local building official. Note: For mobile home installations unit must be bolted to the floor and properly grounded.

The JP 4220 Wall Unit must be installed by a qualified service person.

1. After selection of the desired wall unit location, prepare the rough opening using framing dimensions on page 10. Be sure to also prepare opening to allow for co-axial vent).
2. Check to make certain all venting requirements and locations are being followed.
3. This Wall Unit is designed for installation into rough framing. **NOTE:** FRAMING MATERIAL ABOVE WALL UNIT MUST MAINTAIN CORRECT CLEARANCE TO WALL UNIT AND VENT PIPES.

WARNING: One-inch clearance to sides & below and 2 inches clearance on top of horizontal sections and elbows.

4. NOTE: A removable panel in the enclosure for future visual inspection of flue connection is recommended.
5. Have gas supplier or qualified plumber install gas supply line to wall unit and connect to the ½" female connector. Be sure gas and plumbing instructions (see Page 13 through 14) and all local and national codes are carefully followed.

IMPORTANT: Any safety screen, guard, glass, grill etc. removed for servicing this wall unit must be replaced prior to operating this wall unit.

GENERAL FLUE VENTING INSTRUCTIONS

The Piazzetta Design Wall Unit must be vented using the Piazzetta Design approved vent system components. Approved brands of vent components include DuraVent, AmeriVent, Selkirk, Secure-Vent, or Metal-Fab vent pipes and venting components. All warranties will be voided and serious fire, health or other safety hazards may result from any of the following actions: Installation by unauthorized personnel; installation of any damaged component; unauthorized modification of vent system; installation of any components not approved by Piazzetta Design; failure to meet all clearance requirements; failure to properly twist-lock and positively seal all components. Consult local building codes before beginning the installation.

WARNING

Always maintain required clearances (air spaces) to combustibles to prevent a fire hazard. Do not fill air spaces with insulation. Check installation instructions for minimum clearance requirements between the outer walls of the vent pipe and nearby combustible surfaces. Be sure to check the vent termination clearance requirements from decks, windows, soffit, gas regulators, air supply inlets, and public walkways, as specified in these installation instructions and local building codes.

SAFETY PRECAUTIONS FOR THE INSTALLER: Wear gloves and safety glasses for protection, Exercise extreme caution when using ladders or on rooftops, and be aware of electrical wiring locations in walls and ceilings.

This gas appliance and vent system must be vented directly to the outside of the building, and never attached to a chimney serving another solid fuel or gas burning appliance. Each direct vent gas appliance must have its own separate vent system. Common vent systems are prohibited.

To assure proper venting performance of this high-performance Piazzetta Design Direct Vent Wall Unit, it is critical that all brands of vent pipe sections are sealed tightly and leak-proof. This means that all pipe sections must be carefully rotated into the fully "twist-locked" position.

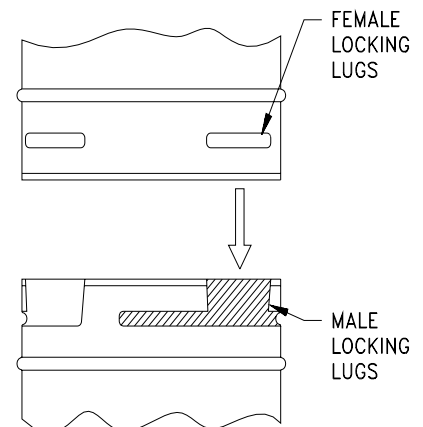
We strongly recommend that fixed length pipe sections be used in place of telescoping sections whenever possible.

Note: When using vent pipe manufactured by DuraVent, you must use Milpak 1000° silicate stove sealant (#65-06-00909). Aluminum foil tape may be used on the outer (air intake) pipe joint but is not mandatory. Local Codes may vary. Contact your dealer for proper materials.

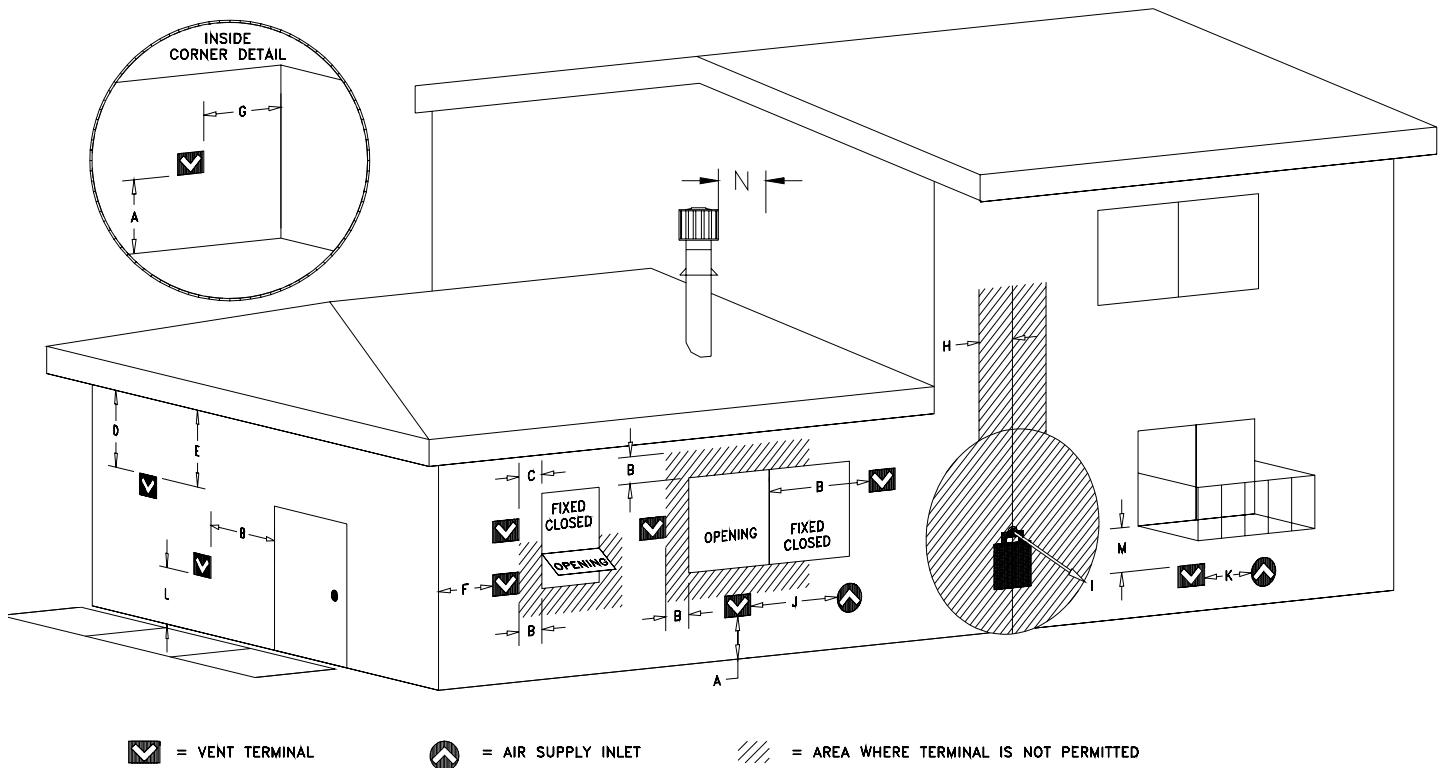
Do not separate telescoping sections. They must be used as complete assemblies.

COMPONENT "TWIST-LOCK" CONNECTION PROCEDURE

Approved pipe and fittings are designed with special twist-lock connections. Follow manufacturer specific instructions for proper assembly of vent runs. Twist-lock procedure is as follows: four (4) indentations, located on the female ends of pipes and fittings are designed to slide straight in to the male ends of the adjacent pipes and fittings, by orienting the four pipe indentations so that they match and slide into the four entry slots on the male ends. Push the pipe sections completely together then twist-lock one section clockwise, approximately $\frac{1}{4}$ turn until the two sections are fully locked. The female locking lugs will not be visible from the outside on the black pipe or fittings. They may be located by examining inside of the female ends.



EXTERIOR VENT LOCATIONS AND RESTRICTIONS



ALL MEASUREMENTS FROM CENTER LINE OF VENT CAP

✓ - Vent Terminal

⬆ - Air Supply Inlet

≡ - Area where terminal is not permitted

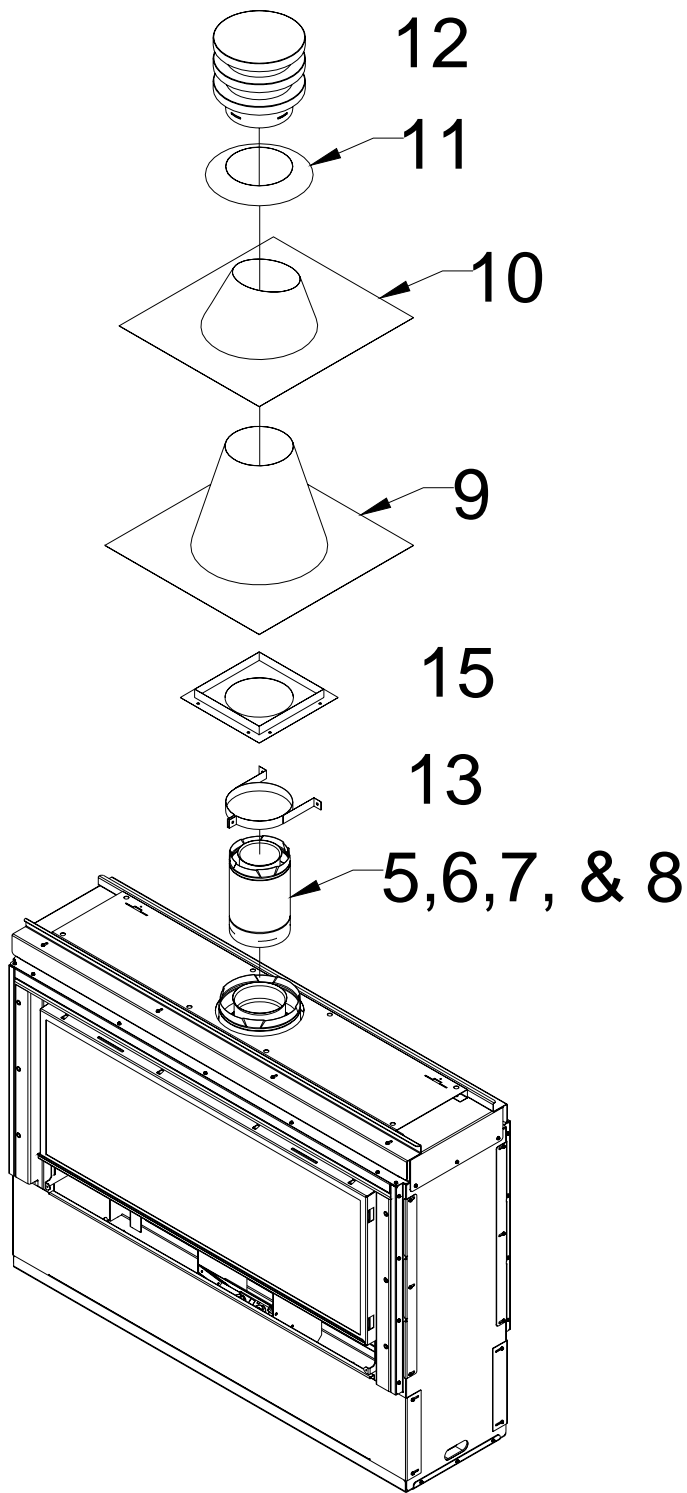
<p>A = Clearance above grade, veranda, porch, deck, or balcony (*12 inches (30 cm) minimum). Vinyl surfaces require 24" min.</p> <p>B = Clearance to window or door that may be opened (*12 inches (30 cm) minimum).</p> <p>C = *Clearance to permanently closed window (minimum 12 inches (30 cm) recommended to prevent condensation on window)</p> <p>D = *Vertical clearance to ventilated or soffit located above the terminal from the center-line of the terminal (18 inches (46 cm) minimum) Vinyl surfaces require 24" min (60 cm).</p> <p>E = *Clearance to unventilated soffit (12 inches (30 cm) minimum) Vinyl surfaces require 24" min (60 cm)</p> <p>F = Clearance to outside corner – 7 inches (18 cm).</p> <p>G = Clearance to inside corner – 12 inches (30 cm). Vinyl surfaces require 24" min (60 cm).</p>	<p>H = *Not to be installed above a meter/regulator assembly within 3 feet (90 cm) horizontally from the center-line of the regulator</p> <p>I = *Clearance to service regulator vent outlet *3 feet (92 cm) minimum.</p> <p>J = *Clearance to non-mechanical air supply inlet to building or the combustion air inlet to any other appliance. 12 inches (30 cm) minimum.</p> <p>K = *Clearance to a mechanical air supply inlet 6 feet (1.8 m) minimum</p> <p>L = † Clearance above paved side-walk or a paved driveway located on public property (*7 feet (2.1 m) minimum)</p> <p>M = Clearance under veranda, porch, deck, or balcony (*12 inches (30 cm) minimum ‡)</p> <p>N = Minimum 24" horizontal clearance to any surface, such as an exterior surface, for vertical terminations.</p>
--	--

† A vent shall not terminate directly above a sidewalk or paved driveway, which is located between two single-family dwellings and serves both dwellings.

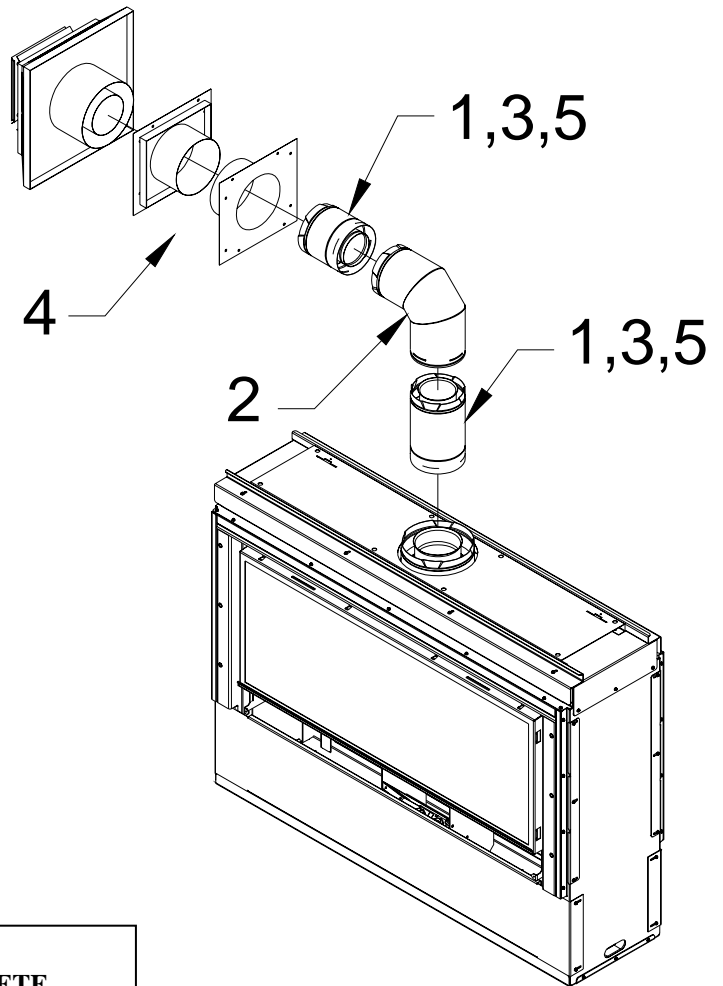
‡ Only permitted if veranda, porch, deck, or balcony is fully open on a minimum of two sides beneath the floor.

As specified in CGA B1:19 Installation Codes (1991). **Note:** Local codes or regulations may require different clearances.

FLUE VENTING COMPONENTS IDENTIFICATION



ITEM	DESCRIPTION
1	12" VENT STACK
2	90° GALVANIZED ELBOW
3	24" VENT STACK
4	ADJUSTABLE WALL THIMBLE
5	48" VENT STACK
6	90° GALVANIZED ELBOW
	45° GALVANIZED ELBOW
7	ADJUSTABLE WALL THIMBLE
8	ATTIC INSULATION SHIELD 12"
9	ROOF FLASHING (0/12 TO 6/12)
10	ROOF FLASHING (7/12 TO 12/12)
11	STORM COLLAR
12	VERTICAL VENT CAP
13	SUPPORT BAND
14	HORIZONTAL VENT CAP
15	FIRE STOP SPACER



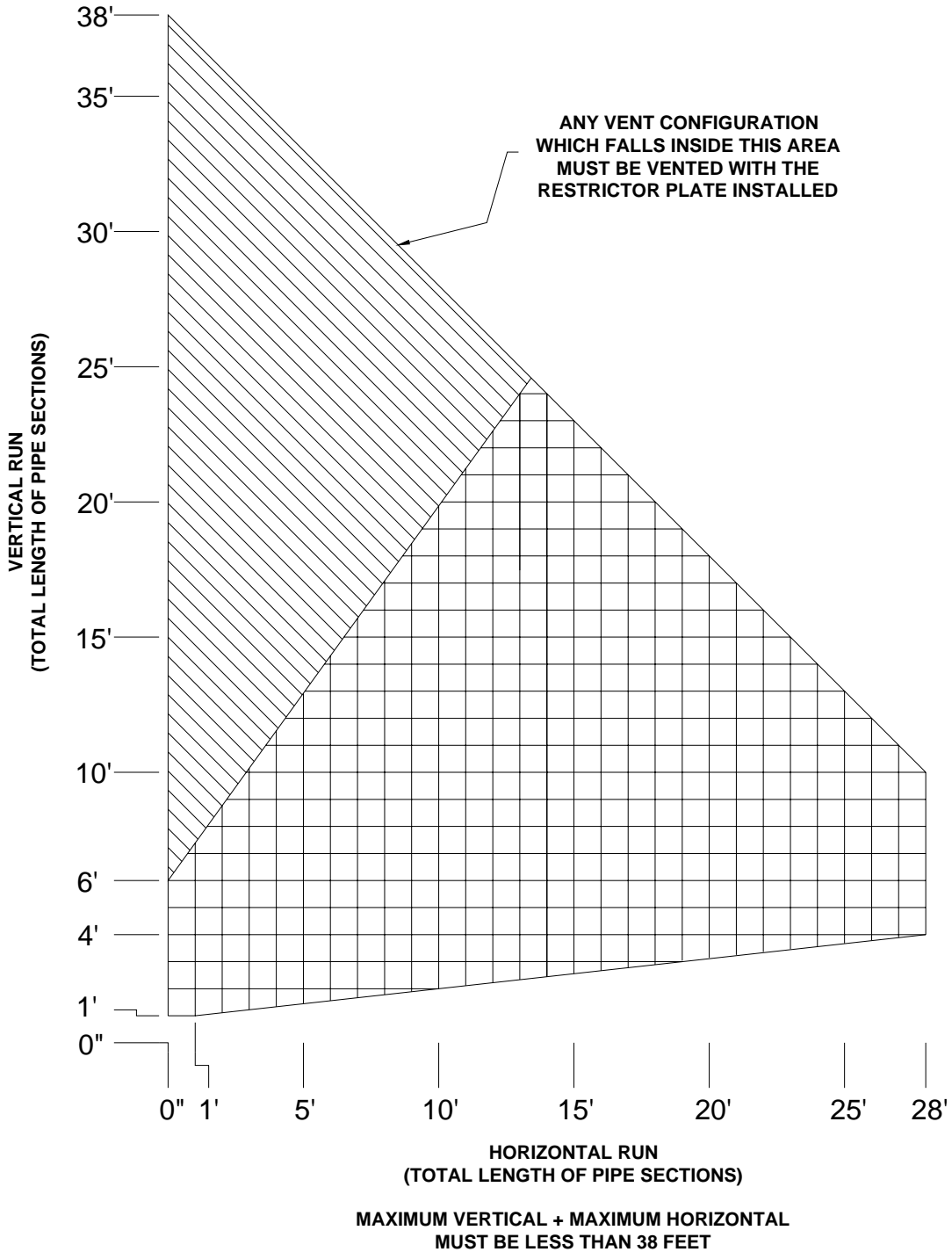
**DO NOT SEPARATE TELESOPING SECTIONS.
ALWAYS USE TELESOPING SECTIONS AS COMPLETE
ASSEMBLIES.**

MASTER FLUE VENTING REQUIREMENTS CHART

NOTE: THIS CHART IS APPLICABLE TO BOTH NATURAL GAS AND LPG INSTALLATIONS.

IMPORTANT NOTES:

1. Minimum vent run is Twelve (12) inches vertical before any 90-degree elbow may be applied.
2. 28 feet maximum horizontal run allowed only if the first vertical section connected directly to the top of this wall unit is between 4 feet and 10 feet in length.
3. Two 45-degree elbows may be connected directly to the initial 12 inch section of this wall unit to create a horizontal offset, however the extents of the configuration must fall within the chart below.



IMPORTANT VENTING CONFIGURATION NOTES

MAXIMUM HORIZONTAL RUN

- A. Maximum Horizontal Run allowed is 28 feet if a vertical starter section that is between 4 foot and 10 feet is connected directly to this wall unit's flue starter collar and only one 90 degree elbow is used.
- B. The **MINIMUM** Vent Run for this unit is 12 inches Vertical by 12 inches Horizontal.

MAXIMUM VENT SYSTEM LENGTH

- A. Combined total length of all straight pipe sections in the vent system shall be less than 38 feet if using only one 90-degree elbow or equivalent.
- B. Combined total length of all straight pipe sections in the vent system shall be less than 33 feet when using two 90-degree elbows or equivalent.

USING 90 DEGREE ELBOWS

A single 90° vertical-to-horizontal elbow is already calculated into the allowable maximum 28' horizontal run. The Venting Requirements Chart on assumes that for all horizontal runs calculated, one 90-degree elbow is used within the venting system. **Each additional 90° elbow reduces the maximum horizontal distance by 5'.**

If you plan to use more than one 90-degree elbow within the vent system, first use the Venting Requirements Chart (Figure #14) and calculate the maximum horizontal run you are allowed based on the first vertical section connected directly to the wall unit. From this maximum horizontal run calculated, subtract 5 feet for each additional 90-degree elbow you will use.

CAUTION: If a vertical-to-horizontal discharge elbow or a horizontal-to-horizontal discharge elbow is enclosed within a wall, floor or ceiling, a top air space clearance of 3" must be maintained. Be sure to maintain 1" air space to any combustibles (2" above horizontal runs).

Example 1: By using three total 90° elbows the maximum horizontal distance has been reduced to 22 ft. Since one 90° Elbow has been calculated into a standard horizontal vent run, two additional 90° Elbows would decrease the total horizontal length by 10 feet. (5 feet per 90° Elbow)

Example 2: If the first vertical section connected directly to the Wall Unit is between 4 feet and 10 feet long, you are allowed a maximum 28 feet of horizontal run. If you plan to use two (2) 90-degree elbows in the entire system, subtract five (5) feet from the 28 feet maximum horizontal run calculated. Your maximum allowed horizontal run would then be 23 feet.

USING 45-DEGREE ELBOWS

Two 45-degree elbows may be used in place of one 90-degree elbow. On 45-degree runs, one foot of diagonal pipe is equal to 8-1/2 inches horizontal run and 8-1/2 inches vertical run. Two 45-degree elbows may be connected directly to the vent starter 12 inch section on this wall unit to create an offset to provide the required clearances to combustible framing or sheathing materials.

Two 45-degree elbows may be connected directly to the 12 inch starter vent stack of this wall unit to create a horizontal offset. 28 feet maximum horizontal run allowed with this offset configuration only if the first vertical section connected directly to the last 45-degree elbow is more than 4 feet long. For maximum allowable horizontal distances with the 45-degree offsets, see the Master Venting Configuration Chart.

Note: Each 45° elbow reduces the maximum horizontal distance by 3 feet.

SUPPORT: Horizontal runs of pipe will require one vent support for every 3 ft. of pipe.

MINIMUM RISE HORIZONTAL TERMINATION

The JP 4220 Wall Unit must be installed by a qualified Piazzetta Design approved serviceperson.

The Maximum Horizontal Run allowed is 12 inches if a 90-degree elbow and a starter section of 12 inches is connected directly to this wall unit's flue starter collar.

In this configuration, the horizontal centerline of the 90° elbow will be 58" inches up from the floor level of this Wall Unit.

See GENERAL APPLIANCE SPECIFICATIONS on page 7 and MASTER FLUE VENTING REQUIREMENTS CHART on Page 19.

Always maintain 1" clearance from vent pipe sides and bottom to combustibles, 2" clearance on top of pipe on horizontal runs and on top of horizontal discharge elbows. Do not fill air spaces with insulation or other material.

1. Position wall unit in desired location. See for guidelines on proper vent cap placement on the exterior of home. Check to determine if wall studs are in the way when venting system is attached. If this is the case, you may want to adjust the wall unit location or modify the exterior wall framing to allow the vent system to penetrate the wall.
2. Measure from the floor level of the wall unit up 58 inches [add ¼" rise for every foot of horizontal run] and mark wall directly at the center of where the vent pipe will penetrate the exterior wall.
3. Cut and frame a 10" wide x 11" high opening in the wall. The hole must be positioned so the vent system will have a ¼" rise per foot of run AND be perpendicular to the wall. The height of the opening must be located to meet all local and national building codes. Do not allow the termination to be easily blocked or obstructed. If wall being penetrated is non-combustible material, i.e. masonry block, brick, etc., a 9 inch diameter hole is acceptable.
4. Attach the 90-degree elbow to the starter section of 12 inches. Attach a horizontal section to the 90-degree elbow. Be sure all vent component connections are in their fully twist-locked position and are leak-proof. Be sure 1000° sealant is used on the inner pipe joints of all pipe sections manufactured by Simpson DuraVent. The length of the horizontal piece that fits through the wall will be determined by the location of the wall unit relative to the wall. For a normal installation where this wall unit is installed directly against an exterior wall constructed using 2x4 lumber or 2x6 lumber, only a 6" horizontal section is required. There MUST be a minimum of 1" air space clearance to combustibles from all vent components (2" above horizontal runs and horizontal discharge elbows).
5. **A wall thimble must always be used when penetrating combustible wall materials.**
6. From the exterior of the home, slide the horizontal vent cap over the end of the horizontal pipe and tightly secure the cap to the wall with screws. Seal with a high quality caulking.

NOTE: Combustible wall thickness cannot exceed 8" maximum.

NOTE: Venting terminal should not be recessed into wall or siding.

VERTICAL RISE HORIZONTAL TERMINATION

The minimum vertical section required to be connected directly to the starter adapter on this wall unit is 48 inches when used with a maximum horizontal run of 28 ft. If the total length of the vertical sections connected directly to the starter adapter on this wall unit is between 4 feet and 10 feet, you are allowed a maximum 28 feet horizontal run, but cannot exceed 38 feet in total run length. For any vertical run above 6 feet, the included restrictor plate must be used. For other venting configurations within these maximum limits, see page 19.

Combined total length of all pipe sections (include restriction of elbows) in the vent system shall be less than 38 feet if using only one or 33 feet if two 90-degree elbows are used;

NOTE: The horizontal run of vent pipe must be level or have a ¼" rise for every 1' of run toward the termination. Never allow the vent to run downward. This will cause high temperatures and the possibility of a fire.

This JP 4220 Wall Unit must be installed by a qualified Piazzetta Design service person

1. Position wall unit in desired location. See Figure for guidelines on proper vent cap placement on exterior of home. Check to determine if wall studs are in the way when vent system is attached. If this is the case you may want to adjust the wall unit location.
2. Locate position where vent pipe will pass through any ceilings and will penetrate the outside wall. Since vent pipe sections "overlap" we suggest pre-assembling and measuring the total vent pipe run so you can more accurately locate the point where the vent pipe will penetrate the outside wall. Be sure all vent components are properly twist locked and leak-proof.
3. Cut and frame a 10" wide x 11" high opening in the outside wall openings and 10" x 10" opening in ceiling openings. The outside wall hole must be positioned so the vent system will run with a ¼" per foot rise AND be perpendicular to the wall. The height of the opening must be located to meet all building codes and not allow the termination to be easily blocked or obstructed. A ceiling fire stop spacer is required at any floor (ceiling) opening.
4. Connect vent pipe to the wall unit adapter on top of wall unit vent outlet.

NOTE: DO NOT SEPARATE TELESCOPING SECTIONS. THEY MUST BE USED AS COMPLETE ASSEMBLIES.

5. The horizontal pipe must end flush with the exterior wall of the home. Horizontal pipe will require a proper support every 3 ft. of vent pipe. THERE MUST BE A MINIMUM OF 1" CLEARANCE TO COMBUSTIBLES FROM ALL VENT PIECES (2" above horizontal runs).
6. **A wall thimble must always be used when penetrating combustible wall materials.**
NOTE: Combustible wall thickness cannot exceed 8" maximum.
7. From the exterior of the home, slide the horizontal vent cap over the end of the horizontal pipe and tightly secure the vent cap to the wall with screws. Seal with high quality caulking.

NOTE: Venting terminal (Vent Cap) should not be recessed into wall or siding.

VERTICAL THROUGH-THE-ROOF VENTING

The maximum vertical run of vent pipe is 38 ft. from the starter collar of the wall unit. Maintain 1" air space clearances on all sides of vents (2" above horizontal runs).

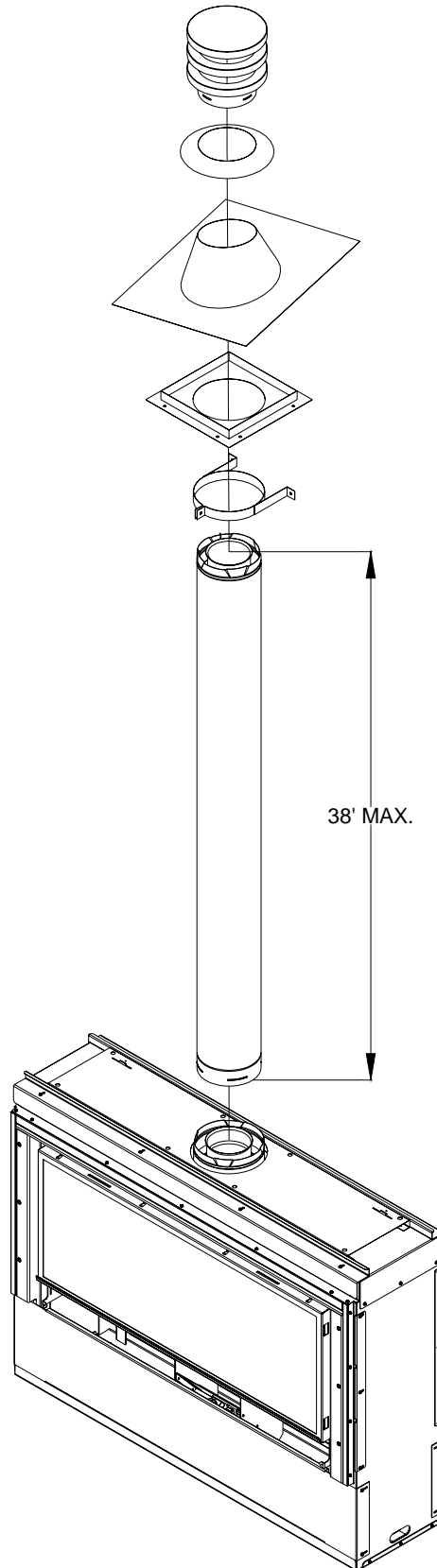
If an offset is required directly on top of the wall unit, two 45° elbows may be connected directly to the top of this wall unit to create a horizontal offset then to run upwards vertically. Doing so will continue to allow the use of the 35 feet maximum vertical run.

The JP 4220 Wall Unit must be installed by a qualified Piazzetta Design approved serviceperson.

1. Place the wall unit in its desired location. Drop a plum bob from the ceiling to the position of the wall unit flue exit. Mark the location where the vent will penetrate the ceiling. Drill a small hole at this point. Next, drop a plum bob from the roof to the hole previously drilled in the ceiling. Mark and drill the spot where the vent will penetrate the roof. Determine if ceiling joists, roof rafters or other framing will obstruct the venting system. You may wish to relocate the wall unit or to offset, to avoid cutting load bearing members.
2. Cut and frame a 10" x 10" opening in the ceiling centered on the hole drilled in Step No. 1.
3. To determine the length of the vent pipe required, measure the distance from the wall unit flue outlet to the ceiling, the ceiling thickness, the vertical rise in the attic or second story and allow sufficient vent height above roofline. For two story installations, fire stops are required at each floor level. If an offset is needed in the attic, additional pipe and elbows will be required.
4. Assemble the desired lengths of vent pipe and elbows to reach from the wall unit flue outlet. Ensure that all vent pipe and elbow connections are in their fully twist-lock position and that inner pipe joints are sealed and are leak-proof. Maintain 1" airspace clearances to combustibles (2" above horizontal runs). Draw an ellipse on the surface of the roof, centered in the small drilled hole placed in the roof in Step 1, using the flashing as a template. Cut an opening in the roof following the outside edge of the ellipse. The opening should be a sufficient size to meet all clearance requirements. Continue to assemble lengths of pipe and elbows necessary to reach up through the roofline. Galvanized pipe and elbows may be utilized in the attic, as well as above the roofline. The galvanized finish is desirable above the roofline due to its higher corrosive resistance.
 - a) If an offset is necessary, it is important to support the vent pipe every 3 ft. to avoid excessive stress on the elbows and possible separation. Wall straps are available for this purpose.
 - b) Whenever possible, use 45° elbows instead of 90° elbows. The 45° elbow offers less restriction to the flow of flue gases and intake air. If a 90° elbow is necessary there must be a minimum of one 4 foot pipe section rise from the 90° elbow to the vent cap. A maximum of three 90° elbows are allowed per installation.
5. Slip the flashing over the pipe sections protruding through the roof. Secure the base of the flashing to the roof with roofing nails and seal flashing to roof. Ensure the roofing material overlaps the top edge of the flashing. Verify the minimum clearance to combustibles at the roofline does not fall within one inch of the outside of the venting.
6. Continue to add pipe sections until the pipe and the vent cap meet the minimum building code requirements, as outlined on the following page.
 - a) For multi-story vertical installation, a ceiling fire stop is required at the second floor and any subsequent floors. The opening should be framed to 10" x 10" inside dimensions.
 - b) Any occupied areas above the first floor, including closets and storage spaces, which the vertical vent passes through, must be enclosed. The enclosure may be framed and sheet rocked with standard construction materials, however, be sure to maintain minimum allowable clearances between the outside of the vent pipe and the combustible surfaces of the enclosure.

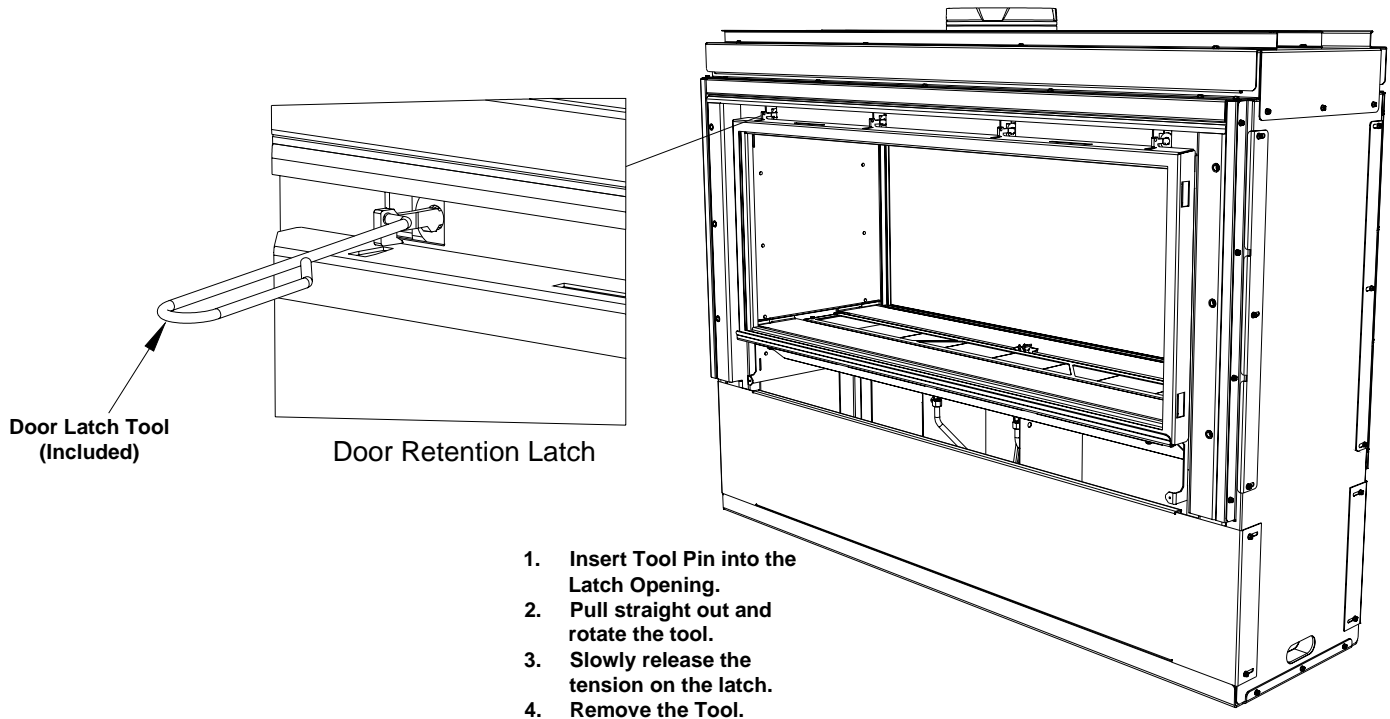
□ Height “*H” of top of vent cap can be determined as follows:

ROOF PITCH	“H” DIMENSION	
	FEET	METERS
FLAT to 6/12	2	.6
7/12 to 9/12	2	.6
10/12 to 12/12	4	1.2
13/12 to 16/12	6	1.8
17/12 to 21/12	8	2.4



JP 4220 DOOR OPERATION

TO REMOVE DOOR



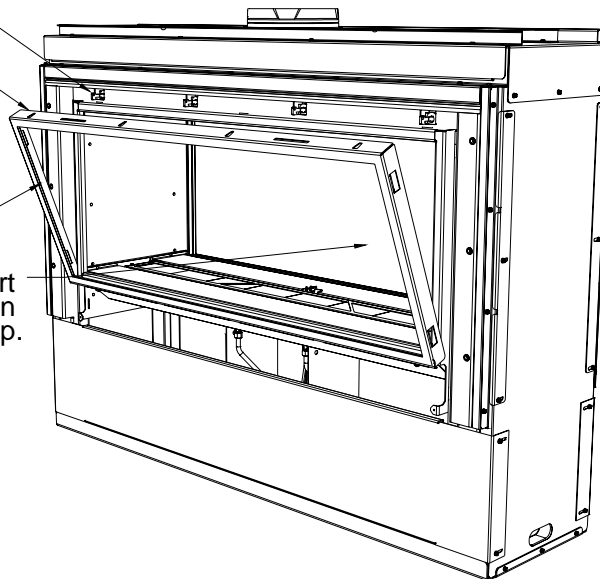
Repeat this procedure on the remaining latches

Door Retention Latch

Door Retention Slot

Note:

When removing this door be sure to provide ample support to the frame, by grasping it on the sides and not from the top.



DOOR REPLACEMENT

Door Replacement is the reverse of the featured description above. Special care should be observed with any fragile appliance. If the door frame or the glass is damaged, replacement components **MUST** be ordered.

DO NOT Operate this appliance with damaged components, contact your JOPI Certified Installer for replacement components. See **Page 36** for Replacement Part Numbers and ordering information.

This door is sold as a complete assembly (Part # HA-56-00122), in the event of fracture or damage the glass must be completely removed from the unit prior to continued usage.

DO NOT ATTEMPT TO REPAIR THIS UNIT! DISASSEMBLY OF THIS UNIT WILL VOID THE WARRANTY.
To prevent ANY broken glass from interfering with air flow patterns it is absolutely necessary to contact your JOPI Certified Installer for advanced cleanup of this unit.

The following Check Off Lists must be completed prior to final operation of the Wall Unit.

INSTALLATION CHECK OFF LIST

- ☐ Co-axial vent rigid pipe, wall vent cap or roof vent cap must be installed by a Piazzetta Design approved person in accordance with instructions. All joints must be secured, "twist-locked" and leak-proof. 1000°F sealant must be used on the inner pipe joints of all DuraVent pipe sections.
- ☐ Horizontal or vertical vent cap must be installed "**right-side-up**" and tightly sealed to structure per instructions. Vent Caps must be Piazzetta Design approved.
- ☐ Proper exterior and interior clearances for vent systems and locations for wall vent cap/roof vent cap must be maintained.
- ☐ Carefully check for correct gas pressure, proper size gas lines and for gas leaks.
- ☐ Gas Supply Service must be installed in accordance with instructions and local and national codes.

LIGHTING CHECK OFF LIST

- ☐ All items on "Installation Check Off List" (see above) must be completed.
- ☐ Connect thermostat to speaker terminal panel next to gas valve.
- ☐ Check air shutter opening $-\frac{1}{4}$ " Nat. gas and LP gas.
- ☐ Carefully follow all Lighting and Log Installation Instructions.
- ☐ Make certain that burner lights immediately and flame runs promptly on burner and lights entire burner. DO NOT proceed with operation unless burner cycles "on/off" without delays.
- ☐ Make certain that the flame is "stable" and does not "lift" off burner. If flame lifts off burner, turn unit off and check that all vent pipes are "twist locked" and leak proof, the vent cap is "right side up" and that 1000° Sealant has been used on the inner pipe joints of all DuraVent pipe sections. DO NOT proceed with operation if flame is "lifting off" burner. If the venting configuration includes a vertical run of pipe above 6', The restrictor plate must be installed or "lift-off" will occur.

Note: Do not separate telescoping sections. They must be used as complete assemblies.
- ☐ Make certain glass door is in proper closed position and "centered" in firebox opening.

LIGHTING AND OPERATION INSTRUCTIONS

IMPORTANT: Be sure all items on "INSTALLATION CHECK OFF LIST" (PG. 30) have been completed!

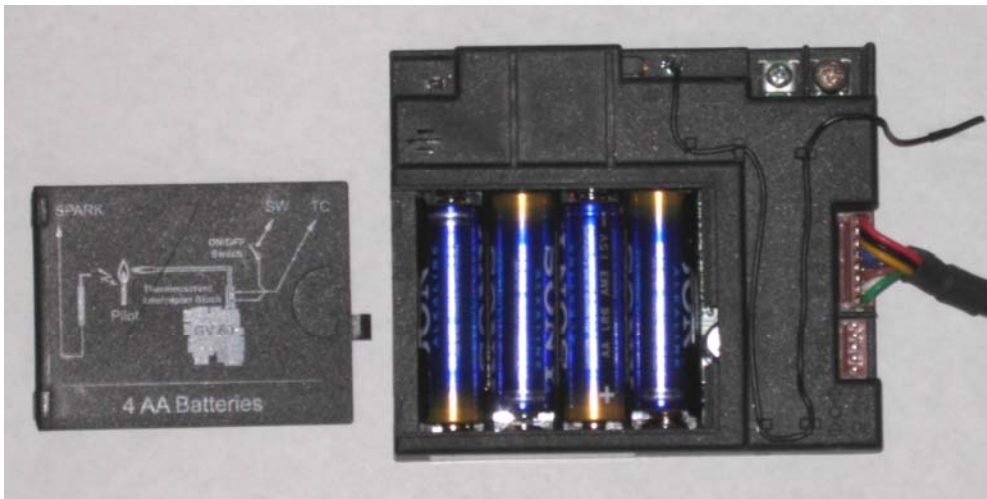
CAUTION: If the pilot goes out, be sure to wait a minimum of five minutes before relighting.

1. Make sure any gas supply shut-off cocks are open.
2. Pull open bottom slide drawer open to expose gas valve.
3. Rotate Gas Valve Dial counter- clockwise to "ON"

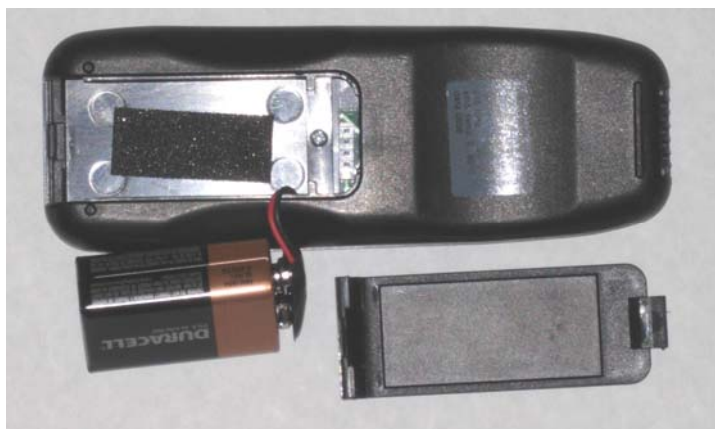


Gas Valve

4. Place Rocker Switch in ON position (-)
5. Install 4-AA batteries into receiver (located on the left side of gas valve):



6. Install a 9 volt battery into remote control:



7. Ignite pilot with remote control as follows:

Simultaneously press the "OFF" and UP ARROW buttons, until an audible "BEEP" is heard. This starts a timing sequence during which a series of "BEEPS" is heard:

Press both buttons to begin ignition sequence.



When beeping stops, the pilot flame should be lit. If there is no pilot, wait 5 minutes, and repeat this step. If it still does not light, refer to the MERTIK MAXITROL troubleshooting information included with these instructions.

8. Light the main burner:

Press and hold the UP ARROW BUTTON, until the main burner ignites, and the beeping stops. This is the high burner setting.

The flame level and height may be adjusted from pilot only (standing pilot), to the highest flame setting, using the UP & DOWN ARROW buttons.

9. The pilot may be left on continuously, or shut off completely by pressing the "OFF" button.

To restart, repeat Step " 7, above.

9. Open windows for first four hours of operation.

NOTICE: Initial heater start-up will cause some NON TOXIC "off gassing" of adhesives, gasket binders, paint and other materials. Most nuisance odors will be eliminated after the first two hours of operation; however, slight amounts may be present during first 24 hours of initial operation. To eliminate all nuisance odors, continuously operate this wall unit on the HIGH setting for 4 to 6 hours.

WARNING: Label all wires prior to disconnection when servicing controls. Wiring errors can cause improper and dangerous operation. Verify proper operation after servicing.

TROUBLE SHOOTING THE JP-4220 FIREPLACE

SYMPTOM	PROBABLE CAUSES	CORRECTIVE ACTION
1. Thin black coating (soot) forms on viewing glass.	A. Incorrect gas pressure B. Not enough combustion air	Have gas supplier check for correct gas inlet pressure (7" W.C. Nat. Gas; 11" W.C. LP Gas). If sooting continues, open air shutter on burner. If sooting still continues, shut off unit and call Piazzetta Design service person. NOTE: To clean glass – remove glass and wipe glass with cloth or paper towel.
2. A change in flame appearance or burner operation.	A. A change in gas pressure. B. Carbon, dirt, or lint.	Have your gas supplier check for correct gas 7" W.C. Nat. Gas; 11" W.C. LP Gas). If flame still needs adjustment see "Flame Adjustment" below. Clean out carbon, spider webs, lint, etc. from shutter area. Logs and burner. NEVER BLOCK AIR INTAKE OR OUTLET VENTS.

CUSTOMER INFORMATION

MAXIMUM ALLOWABLE SURFACE TEMPERATURE

Piazzetta Design Wall Units comply with UL Standards for maximum surface temperatures on exposed combustible surfaces adjacent to the unit. The Maximum allowable surface temperature is 117° F. over ambient (room) temperature. Thus, if a room is 70° – 80° the exposed combustible surfaces immediately surrounding the Wall Unit can have a surface temperature as high as 187° F. – 197° F. (Too hot to touch). This wall unit is certified to keep all adjacent surfaces close to this wall unit within the allowed temperature limits as long as all clearances to such surfaces are provided as required in this manual.

OVER FIRING OF BURNER

NEVER “over fire” units by adjusting gas pressure or drilling out the orifice to increase BTUH above nameplate specifications. Over firing can cause permanent damage to firebox and deterioration of parts and void warranty.

CLEANING VIEWING GLASS

The viewing glass should be cleaned periodically. Exterior glass surface may be cleaned with cleaner as desired. To clean interior surface of glass – use soap and water. CAUTION: Do not use oven cleaner to clean glass.

NOTE: Additives that are put in gas (both natural and propane) to make it smell can be harmful to glass and can leave a white film deposit on the glass. This deposit can be removed with cleaners such as KEL KEM “Polish Plus” (part # 65-06-00455) or comparable product (contact your dealer).

In some cases (especially propane) additives can cause “crazing” or etching on the glass. This is not a common occurrence and it is not covered under the warranty. The solution may be to change propane suppliers.

SOOTING

Sooting is caused by improper installation or air shutter operation. However, some small areas of soot deposits on log surfaces are deemed acceptable. If you observe large soot areas (larger than 1”x1”) on log surfaces or signs of sooting on the door glass (usually a thin black film on the Wall Unit viewing glass or on the outside of the home around the vent cap), the unit must be immediately turned off and the local Piazzetta Design dealer promptly informed. Piazzetta Design dealers will correct “sooting” problems, but Piazzetta Design and their dealers are not responsible for damage caused by excessive sooting that has not been immediately brought to their attention.

OPERATION DURING POWER FAILURE

This wall unit is designed to operate during power outages.

MAINTENANCE

1. **ANNUAL MAINTENANCE OF PIAZZETTA DESIGN UNITS IS REQUIRED.** The following procedures must be performed each year by a Piazzetta Design approved service person. NOTE: Any adjustments to burner or the pilot must be done by a qualified Piazzetta Design service person.
 - A. Clean all lint and dust build-up around the control. Inspect the condition of any wiring under the burner for melting or damage.
 - B. Remove logs & coals and clean away any foreign matter (lint, Carbon, etc.) on the burner and logs. Be sure the burner ports are “open”. Clean the pilot and under side of the logs for any Carbon deposits. NOTE: Logs should be visually checked for Carbon “build-up”. If carbon deposits are visible on logs, unit should be turned off and Piazzetta Design service person contacted. Be sure logs are re-installed per instructions on PAGE 34.
 - C. Check condition of gaskets, gaskets must be tight, replace if necessary.
 - D. Periodically check to verify that the vent system and vent cap are open and free of blockage.
 - E. Check the condition of the glass and door frame periodically. If for any reason the glass or frame has become damaged, do not operate the unit. Operating this unit with broken or damaged glass is extremely dangerous and will void the warranty. Use only authorized parts and materials obtained from JOPI, Inc. when replacing defective or damaged glass.
 - F. Before re-installing glass, have qualified service person check the operation of the pilot.

NATURAL TO LP GAS CONVERSION

Kit #HA-56-00128 for Piazzetta Design Model JP-4220

Caution: The electrical supply to the wall unit must be turned off prior to performing the conversion. The gas supply must be shut off prior to disconnecting the electrical power. The unit must be cold to the touch before this conversion is performed.

ORIFICE SIZE REQUIREMENT:

A Natural Gas to LPG conversion kit #HA-56-00128 must be installed to convert the JP-4220 Wall Unit to burn LPG.

LP Conversion Kit #HA-56-00128 contains the following parts: One LP Pilot Orifice Thimble (0.014), Two Cap Orifice **drill 1.35mm**.

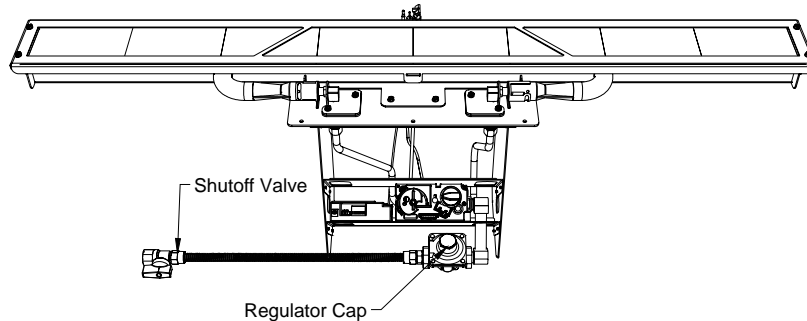
Tools needed for this operation:

- 3/8" Ratchet Driver
- 7/8" socket
- 1/2" Open-End Wrench
- 1/4" Nut Driver.

HA-56-00128 Conversion Kit Includes:

QTY.	PART NUMBER	DESCRIPTION
1	HA-56-00128	LP Conversion Kit, 4220
2	65-14-01368	Orifice, 1.35mm

1. Turn off gas supply at the appliance service valve.
2. Locate the in-line pressure regulator (position shown below). Using a 7/8"Socket, 3/8" X 2" Extension, and 3/8" Ratchet Driver, remove the brass cap from the regulator body. See the following page for details on converting this regulator.
3. Re-install the brass cap onto the regulator, **Do Not Over-tighten**, this fixture is composed of Brass and may become damaged if it is over-tightened.



WARNING

This conversion kit shall be installed by a qualified service agency in accordance with the manufacturer's instructions and all applicable codes and requirements of the authority having jurisdiction. If the information in these instructions is not followed exactly, a fire, explosion, or production of carbon monoxide may result causing property damage, personal injury, or loss of life. The qualified service agency is responsible for the proper installation of this kit. The installation is not proper and complete until the operation of the converted appliance is checked as specified in the manufacturer's instructions supplied with the kit.

AVERTISSEMENT

Cet équipement de conversion sera installé par une agence qualifiée de service conformément aux instructions du fabricant et toutes exigences et codes applicables de l'autorisés avoir la juridiction. Si l'information dans cette Instruction n'est pas suivie exactement, un feu, explosion ou production de protoxyde de carbone peut résulter le dommages causer de propriété, perte ou blessure personnelle de vie. L'agence qualifiée de service est esponsable de l'installation propre de cet équipement. L'installation n'est pas propre et complète jusqu'à l'opération de l'appareil converti est chèque suivant les critères établis dans les instructions de propriétaire provisionnées avec l'équipement.

NATURAL GAS TO LP GAS CONVERSION – REGULATOR SPECIFIC INSTRUCTIONS

The JP-4220 Wall Unit is shipped ready to operate on Natural Gas.

To change to LP gas operation, follow the following instructions:

1. Find the gas regulator which is located at the right rear of the Mertik gas valve assembly:

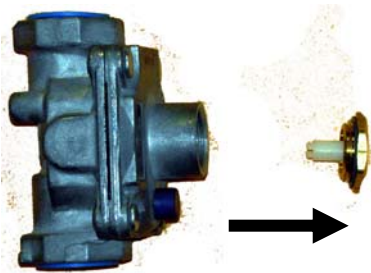


Front View



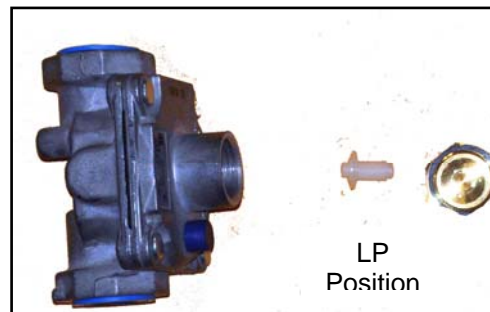
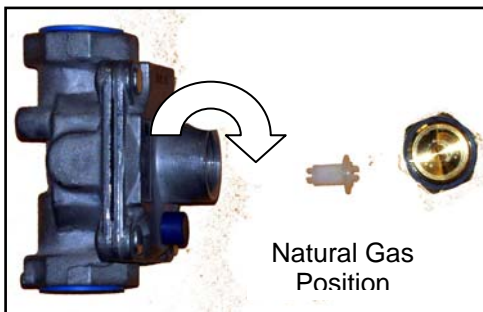
Side View

2. Remove the regulator cap (turn counter-clockwise), and observe the removable plastic stem:

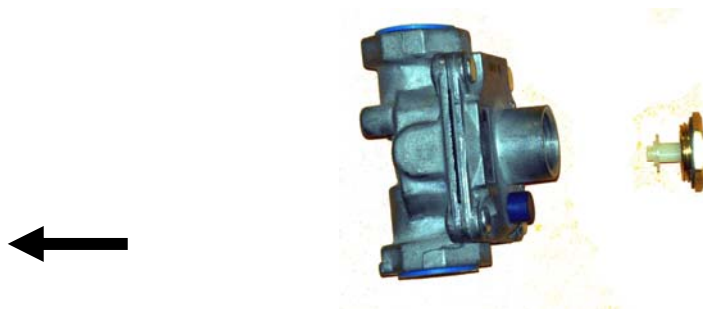


Natural Gas Position
- as shipped.

3. Snap out the plastic stem and rotate it to the LP Position:



4. Reinstall regulator cap and stem:



LP Position
- as modified

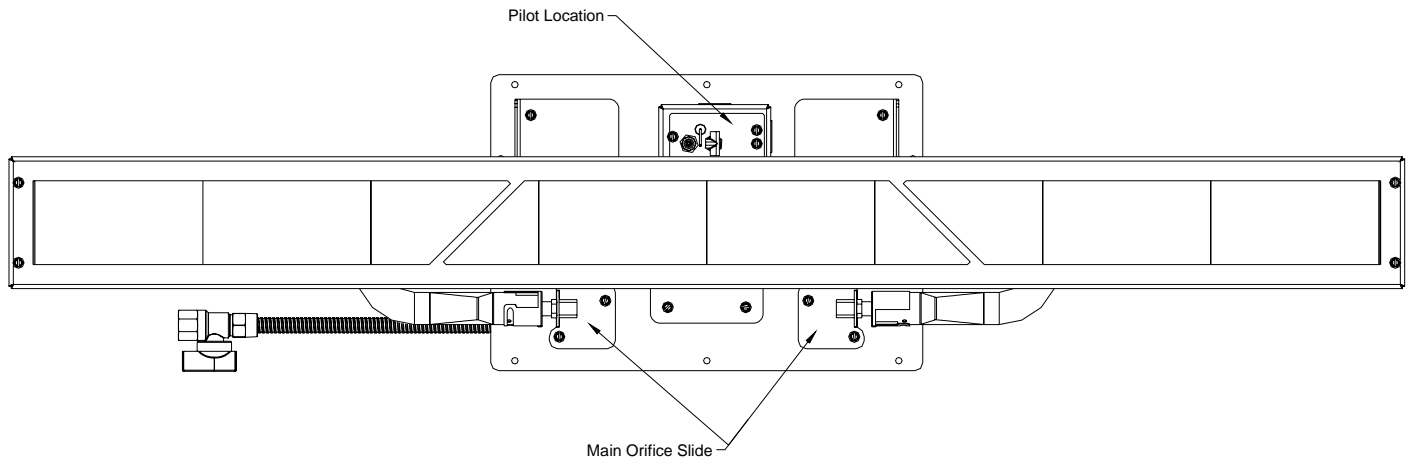
NATURAL GAS TO LP GAS CONVERSION – PILOT SPECIFIC INSTRUCTIONS

This portion of the conversion must be followed with the door removed from the unit. Please refer to page 25 for instructions on how to remove the door.

NOTE: If the Stainless Door Dress Frame is in place, it must be removed prior to removing the door.

In this detail note the locations of the Pilot Assembly and the Main Orifice Assemblies. In this section, a review of the steps necessary to change the pilot orifice will be covered.

Below is the detailed description of the method to changing the pilot orifice. On each orifice there are numbers denoting which size a particular orifice is as well as the gas it is designed to utilize. The LP orifice included in the LP Conversion Kit (Part #HA-56-00128) is marked as 0.014 LP. The pilot platform is removed by utilizing a 1/4" nut driver. Remove the three screws shown below and place them nearby and follow the remaining instructions.



This fitting is connected to the Pilot Gas Line from the Valve.
Uncouple it with a 7/16" wrench.

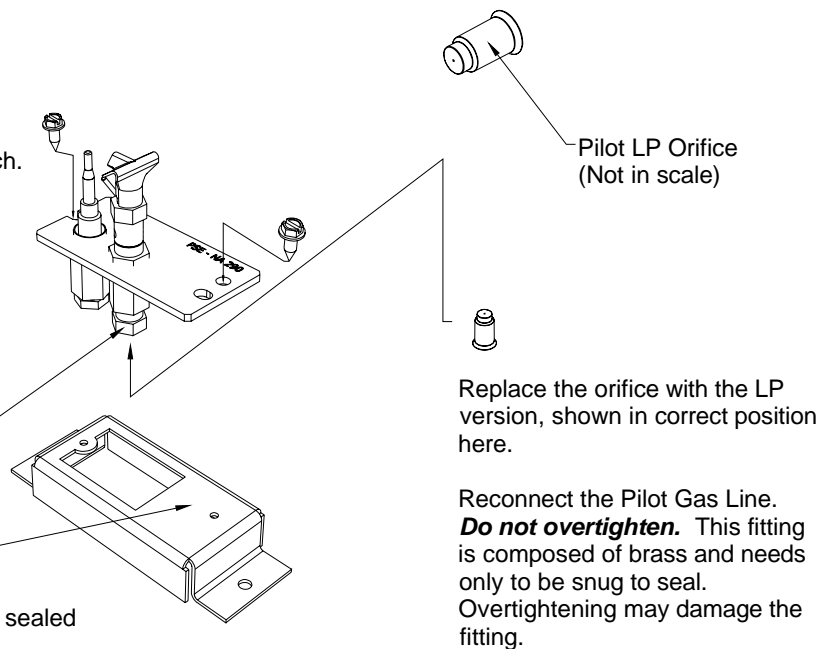
Once the Pilot Gas Line is uncoupled, pull the line out of the vicinity.

Inside the hood assembly is the natural gas orifice which must be removed.

A small tool such as an awl may be required to drop the orifice from it's setting.

Remove the orifice.

This Surface must be sealed with RTV Silicone



NATURAL GAS TO LP GAS CONVERSION – MAIN ORIFICE SPECIFIC INSTRUCTIONS

Changing the main orifice requires the following tools:

- 1/4" Nut Driver.
- 1/2" Open-Ended Wrench

Remove the four 1/4" screws from the Main Orifice Slides as shown in the detailed drawing below.

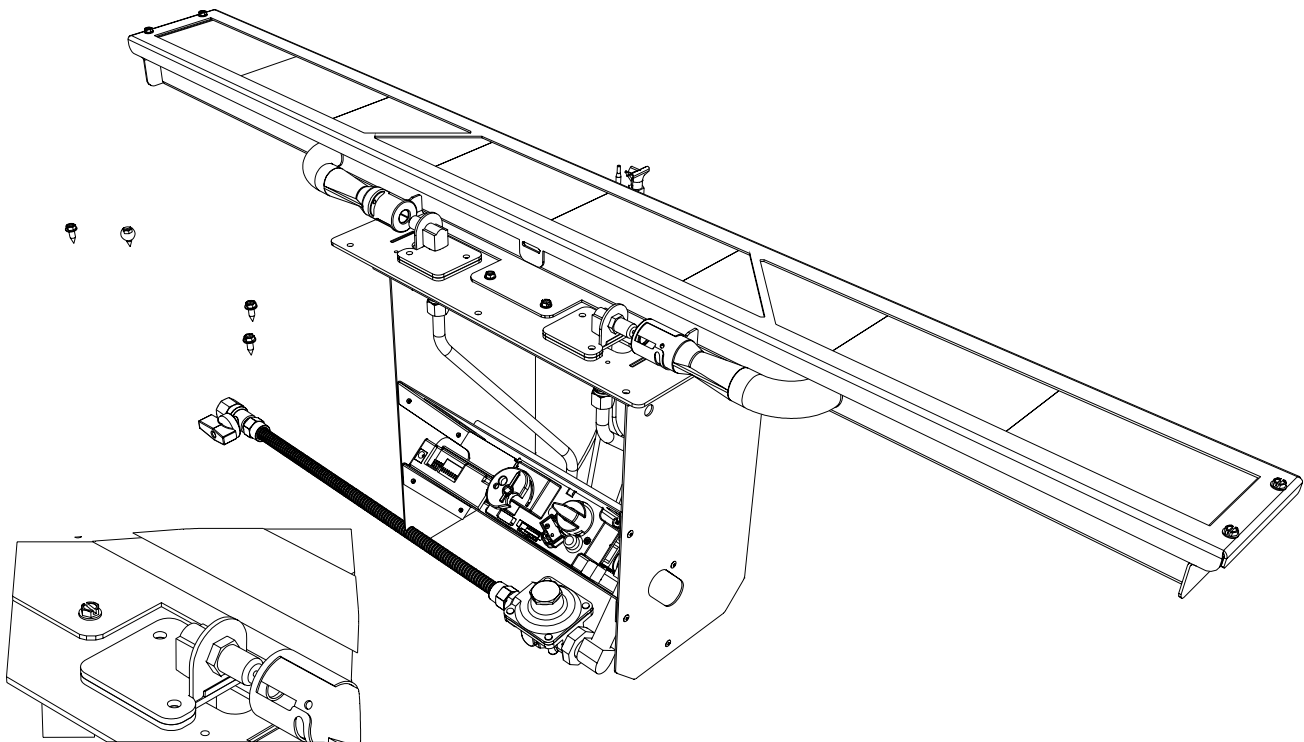
Slide the Main Orifice(s) from its seat in the Venturi as shown in the detail. Remove the orifice with a 1/2" open-ended wrench.

The LP orifice size for this unit is has a non-standard metric specification of 1.35mm for standard altitude and a #55 Drill size for altitudes above 2000 Feet (610M and above)

Replace the Main Orifice(s) with the LP Main Orifice included in the LP conversion kit.

Slide the Orifice back into its seat in the Venturi Tube End. Replace the four 1/4" screws and tighten them completely.

Note: *Use these instructions to convert this unit to High Altitude Specification for the Main Orifice.*



For Installations from 610-1370 Meters (2000 to 4500 ft.) the orifice sizes(DMS) are #43 for Natural Gas and #55 for LP Gas. See Data Plate for additional information. For high altitude installations consult the local gas distributor or the authority having jurisdiction for proper rating methods. If the installer must convert the unit to adjust for varying altitudes, the conversion label must be filled out by the installer and adhered to the unit at the time of conversion.

Cet appareil est équipé pour des altitudes comprises entre 0 et 2000 pieds (0-610 m) seulement

CAN/CGA 2.17

LP GAS PRESSURE REQUIREMENTS

Inlet and manifold gas pressure checking taps are located on gas valve. A qualified installer shall take pressure measurements at these ports to verify and set the correct gas pressures during the LP Kit installation. Manifold pressure must be taken at the "MANIFOLD PRESSURE" tap and inlet pressure at the "INLET PRESSURE" tap **with the burner operating** by a qualified installer. For a detail of the location of these taps see page

	DESIRED INLET PRESSURE	MINIMUM INLET PRESSURE	MAXIMUM INLET PRESSURE	MANIFOLD OUTLET PRESSURE	AIR SHUTTER POSITION
L.P. GAS	11.0" W.C. (2.75 kPa)	5" W.C. (1.25 kPa)	13.0" W.C. (3.24 kPa)	10.0" W.C. (2.5 kPa)	3/8" OPEN MIN. (9.5mm)

TURN GAS VALVE TO "HIGH" POSITION VIA REMOTE. OUTLET GAS PRESSURES MAY VARY PLUS OR MINUS 5%.

LPG PROPER INPUT RATES:

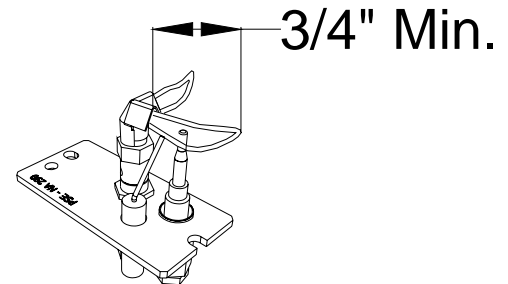
With the proper orifices installed, as specified above, this wall unit utilizing LP Gas will have a maximum input rate of 38,000 Btu/Hr.

LEAK TESTING REQUIREMENTS

Prior to completing the conversion process, check for gas leaks with soap and water solution at all plumbing joints prior to placing this appliance into operation. It is recommended that all gas-plumbing joints, factory installed and field installed are checked for leaks. **DO NOT UTILIZE AN IGNITION DEVICE TO CHECK FOR LEAKS!**

PILOT FLAME AND MAIN BURNER RELATIONSHIP VERIFICATION

Prior to completing the conversion process, the qualified service technician must, light the pilot light and verify the relationship between the pilot light flames and the main burner. The pilot light flames directed towards the propagation ports on the burner must overlap the propagation ports on the burner. The pilot light flames must be a minimum of 3/4" long and must overlap the propagation ports on the burner. Verify that the burner ignites quickly and the burner flames propagate smoothly along the entire length of the burner.



PILOT FLAME LENGTH ADJUSTMENT

If the pilot light flame length is too short, the thermocouple may not detect voltage adequate to open the valve, a qualified installer may adjust the length of the pilot light flames to meet the demand of the thermocouple.

CHECKING FOR NORMAL BURNER IGNITION CHARACTERISTICS

Once the conversion to LPG and all the above steps have been completed, light the main burners.

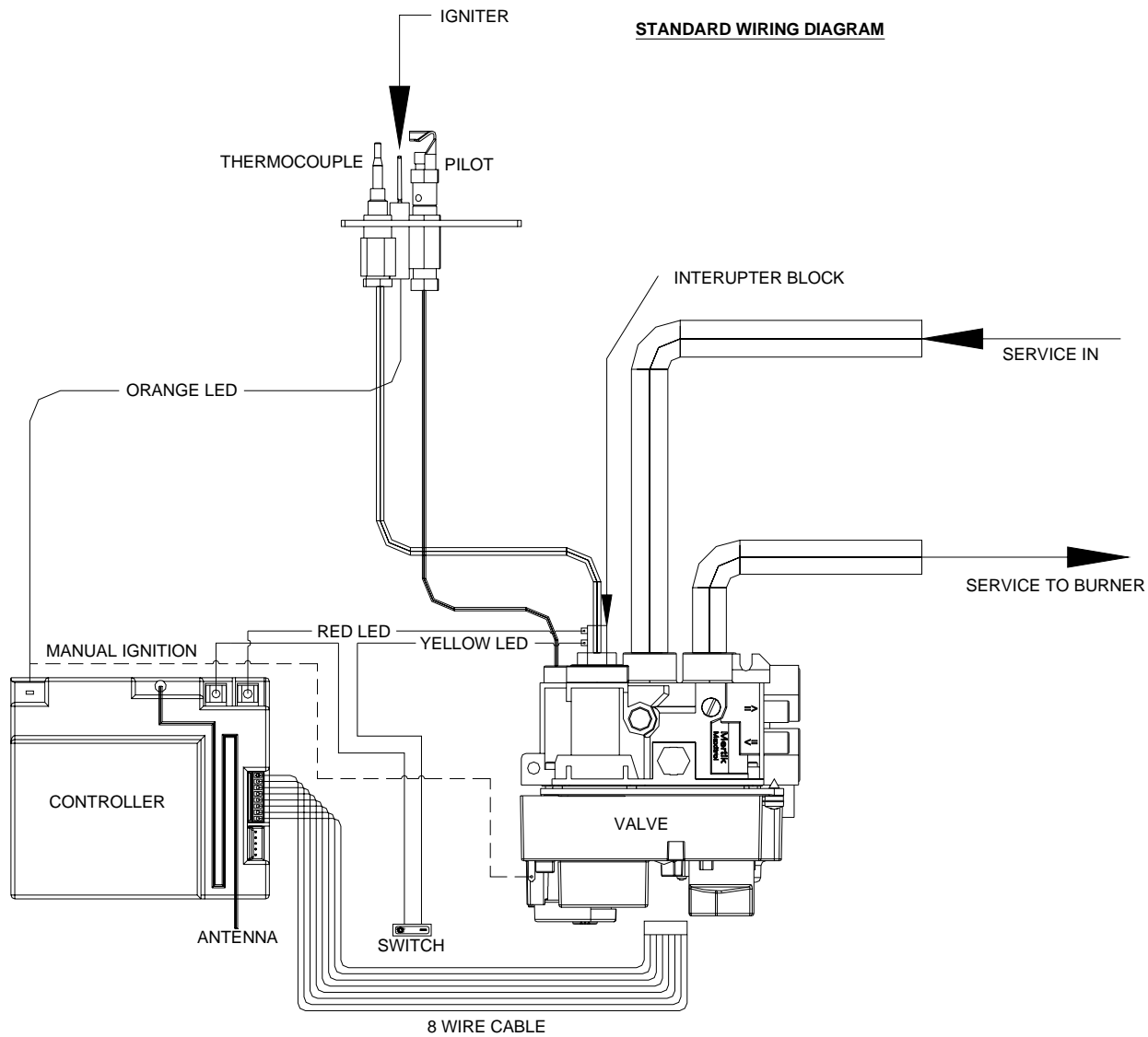
Begin Lighting sequence as described on page 27 and 28. Main burner should now light IMMEDIATELY and flame should not "lift" off burner. If there is any delay in ignition or if flame is "lifting off" burner, turn off burner and carefully check for proper installation of logs/coals (if applicable), vent system and proper pilot flame impingement on burner and thermocouple. Logs or coals must not block pilot flame or main burner flame. Vent system must be leak proof.

ATTACHING LPG CONVERSION LABELS AND HIGH ALTITUDE DE-RATION LABEL

A printed informational label is included with the LPG Conversion Kit. Attach this label to inner surface of the left side of the main valve mounting assembly. If you are de-rating this appliance at a high altitude, also attach the High Altitude De-rating Label, supplied in the Owner's Manual Packet, to this same surface.

Prior to attaching the labels, fill in all the information that is requested in these labels.

GENERAL WIRING DIAGRAM



REPLACEMENT PARTS

Replacement Part Directory	
PART NUMBER	DESCRIPTION
35-01-00448	Traditional Refractory Log Set
35-01-00449	<i>Log, Traditional A</i>
35-01-00450	<i>Log, Traditional B</i>
35-01-00451	<i>Log, Traditional C</i>
35-01-00452	<i>Log, Traditional D</i>
35-01-00453	<i>Log, Traditional E</i>
35-01-00454	Chips, Classic Italian (Included in Traditional Log Set)
35-01-00485	White Stone Burner Media
35-01-00455	Glacial Ice Pebbles Burner Media
35-01-00446	Aluker Refractory Replacement, Mid (Single Sided Units Only)
35-01-00447	Aluker Refractory Replacement, Side (Single and Double Sided Units)
65-06-01144	Remote Control, G6R, Mertik Maxitrol (Replacement)
HA-56-00122	Door Assembly, (Door Frame, Glass, and Glass Gasket Material)
65-06-00909	Mill-Pak 1000° Silicate Stove Sealant

To place an order for replacement parts please contact your fireplace supplier or your installer.

Usage of substitute materials will void the warranty and potentially cause a hazard resulting in a fire, property damage, or fatal injury.

FIELD INSTALLATION ITEMS

Log and Chip Placement is not specifically critical with Piazzetta Wall Units. Conservative placement is suggested to maximize the appearance of the flame. Arrangement of the chips and logs are completely left to the discretion of the homeowner with these simple guidelines.

- Place the Chips on the burner first. This will accomplish an evening of the flame pattern and provide the visual “glow” effect.
- Placing Chips or Logs on the burner surface is highly recommended. Air flows into the firebox and up into the flame. If Logs or Chips are placed outside the burner surface area they may impede the flow of air to the flames resulting in poorly developed flame characteristics or in some instances “sooting”.
- Place logs in an even pattern across the full length of the burner. The number of logs used is not critical.

NOTES

[illegible]

NOTES

[illegible]

PIAZZETTA DESIGN WARRANTY QUALIFICATION & SERVICE REFERENCE FORM

As a part of Piazzetta Design's on-going program of customer satisfaction, this Form verifies proper installation and operation. It is important as a reference for future service. It insures long life and trouble-free operation of Piazzetta Design wall units & stoves and qualifies the owner for Piazzetta Design's lifetime limited warranty. Owner should sign Form when completed and mail a copy along with Warranty Registration to Piazzetta Design. OPTIONALLY, PLEASE REGISTER AT OUR WEBSITE AT:

WWW.JOHNSONGAS.COM/MENDOTA-REGISTRATION.ASP

HOME OWNER: _____ DEALER: _____
ADDRESS: _____ ADDRESS: _____
CITY/STATE/ZIP: _____ CITY/STATE/ZIP: _____
SIGNATURE: _____ PHONE: _____
MODEL #: JP 4220 _____ SERIAL #: _____ DATE INSTALLED: _____

Piazzetta Design direct vent wall units are sophisticated, hi-tech gas appliances. All installation and operating instructions must be carefully followed. This JP 4220 wall unit must be installed and serviced by a qualified Piazzetta Design approved service person.

REF: _____ PIAZZETTA DESIGN JP 4220 INSTALLATION MANUAL

- ☐ **APPROVED VENT PIPES AND VENT CAP INSTALLED – Per Manual.**
Vent pipes must be fully twist-locked and leak proof.
Check minimum and maximum vertical / horizontal and vent runs.
1000° sealant must be used on inner joints at adjustable pipe sections.
- ☐ **CHECK FOR PROPER CLEARANCES TO COMBUSTIBLES & VENT LOCATIONS – Per Manual**
- ☐ **INSTALL PROPER SIZE GAS LINES – CHECK FOR GAS LEAKS – Per Manual**
- ☐ **CHECK FOR CORRECT GAS PRESSURE AT MANIFOLD – Per Manual**
a. 3.5 Inches Water Column Maximum – Nat. Gas
b. 10.0 Inches Water Column Maximum – L.P. Gas
- ☐ **CYCLE BURNERS ON/OFF FOR PROMPT IGNITION – Per “LIGHTING INSTRUCTIONS”**
Burner must light IMMEDIATELY – Flame must travel promptly around “curve” & light burner.
- ☐ **INSTALL LOGS AND ADJUST FLAME – Per Manual**
Proper pilot flame impingement on thermopile & burner – Air shutter opening: ¼” both NG & LP
Check that flame is “stable” and is not “lifting” off burner
- ☐ **BRIEF OWNER ON OPERATION AND MAINTENANCE OF UNIT**
☐ Light Pilot ☐ Operate Burner

WARRANTY REGISTRATION

Your Name _____

Address _____

City _____ State _____ Zip _____

Dealer (Place of Purchase) _____

City _____ State _____ Zip _____

Date of Purchase _____ Serial Number _____

Purchaser's Signature _____

PIAZZETTA DESIGN JP 4220 DIRECT VENT FIREPLACE

CUT OUT PAGE AND MAIL TO: JOPI, INC. - 520 E AVE. N.W. – CEDAR RAPIDS, IOWA 52405

TAPE SHUT

**POSTAGE
NEEDED**

**JOPL, INC.
520 E AVENUE N.W.
CEDAR RAPIDS, IA 52405**

PIAZZETTA DESIGN EXTENDED LIFETIME PROTECTION AND LIMITED WARRANTY

PIAZZETTA DESIGN JP 4220 DIRECT VENT FIREPLACE

JOPI, Inc. - 520 E Avenue N.W. - Cedar Rapids, Iowa 52405, extends this Extended Lifetime Protection and Limited Warranty to the original purchaser of a Piazzetta Design JP 4220 Wall Unit, which is limited and used under normal home conditions.

STANDARD WARRANTY:

JOPI, INC. WARRANTS THAT YOUR NEW PIAZZETTA DESIGN FIREPLACE IS FREE FROM MANUFACTURING AND MATERIAL DEFECTS FOR A PERIOD OF ONE YEAR FROM THE DATE OF INSTALLATION, SUBJECT TO THE FOLLOWING CONDITIONS AND LIMITATIONS:

EXTENDED LIFETIME WARRANTY:

THE COMBUSTION CHAMBER AND OUTER SHIELD OF THE PIAZZETTA DESIGN JP 4220 FIREPLACE ARE WARRANTED FOR THE LIFETIME OF THE ORIGINAL OWNER, SUBJECT TO PROOF OF PURCHASE AND THE FOLLOWING CONDITIONS AND LIMITATIONS:

- 1) This new Piazzetta Design Wall Unit must be installed & serviced by a competent, authorized service contractor. It must be installed and operated at all times in accordance with the installation and operating instructions furnished with the Wall Unit. All adjustments to logs, coals or burner must be made by an authorized Piazzetta Design person. Any alteration, willful abuse, accident or misuse of the product shall nullify this warranty. This warranty does not cover glass or log breakage.

This limited warranty does not cover the cost of service calls, the cost of labor to remove or install parts covered by this limited warranty, freight or other transportation expenses, which may be incurred in connection with obtaining performances under this limited warranty. The remedy for damages as the result of any defects in this product which have been warranted herein is limited to replacement parts and does not include any incidental, indirect or consequential damages or expenses sustained in connection with the product, including damages to property, except as provided by law.

- 2) This warranty is non-transferable and is made to the original retail purchaser, provided the purchase was made through an authorized Piazzetta Design dealer.

Piazzetta Design is not responsible for any damage to or malfunctions of the Wall Unit unless caused by a defect in material or workmanship from normal home use. Damage caused by abuse, improper installation, improper servicing, and installation by unqualified personnel or breach of conditions of this limited warranty will excuse Piazzetta Design from performance of any part of this limited warranty. Piazzetta Design has the right to investigate and inspect the exact, original Wall Unit and entire installation (without any alterations or tampering) in the event a claim is made to determine whether the claimed damage or malfunction was caused by abuse, improper installation or other cause outside this warranty. Piazzetta Design is not responsible for any repairs or material purchases that have not received prior written approval from Piazzetta Design.

NOTE: Minor warping of certain parts or discoloration is normal and is not a defect covered by this warranty. Major warping of parts can be caused by over-firing of your Piazzetta Design Wall Unit. Over-firing above rated nameplate specification is as contrary to the manufacturer's instructions and may void this warranty.

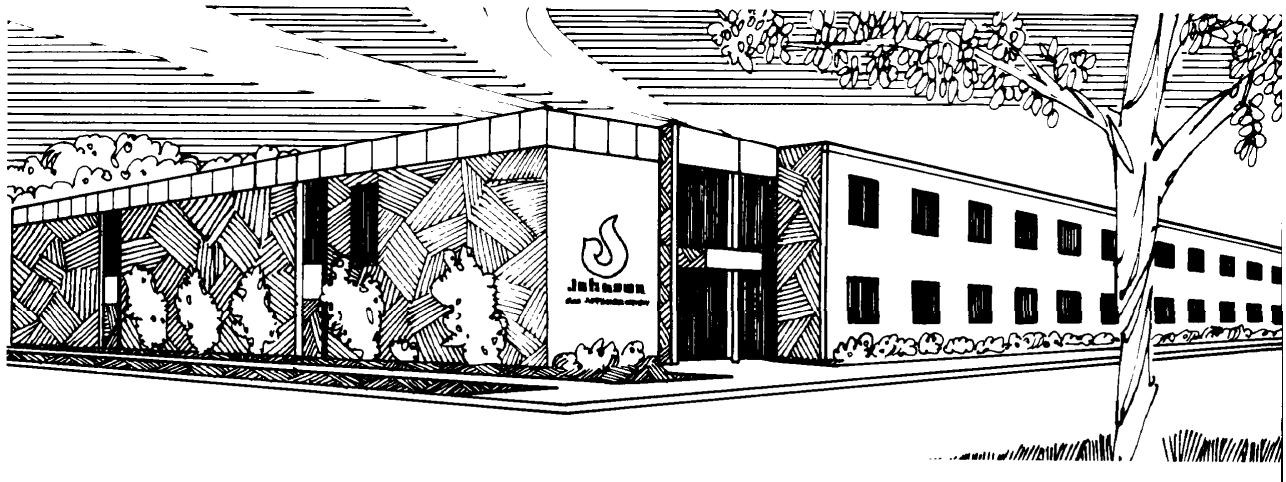
This warranty may not be extended by our representatives or any third party in any manner. The company neither assumes, nor authorizes any third party to assume, on its behalf, any other liabilities with respect to the sale of this Piazzetta Design product.

- 3) Piazzetta Design may at its discretion, fully discharge all obligations of this warranty by refunding the wholesale price of the defective part(s).
- 4) All other warranties - expressed or implied - with respect to the product, its components and accessories, or any obligation/liabilities on the part of the company are hereby expressly excluded. Products made by other manufacturers, sold with the Wall Unit or thereafter, are not covered by this limited warranty. The use of unauthorized components will make this warranty null and void.

This warranty shall be effective only if the original purchaser of the Piazzetta Design appliance is registered with Piazzetta Design Division within thirty (30) days of the date of purchase. Such registration or the failure to register shall not be deemed to create any obligation or liability by the manufacturer and this warranty with its conditions and limitations shall be the only procedure for obtaining any rights against the manufacturer and expresses the sole obligation and responsibilities of the manufacturer which are offered to the original purchaser and accepted upon purchase of the appliance.

Piazzetta Design Division, reserves the right to make changes at any time without notice, in design, material, specifications, prices and the right to discontinue styles and products.

Some states do not allow the exclusion of limitation of incidental or consequential damages or limitations on how long an implied warranty lasts, so the above limitation or exclusion may not apply to you. This warranty gives you specific legal rights and you may also have other rights which vary from state to state.



JOPI, Inc.
520 E Avenue N.W. - Cedar Rapids, IA 52405
Johnson Gas Appliance Co. Piazzetta Design Hearth Division

WEBPAGE: www.jopiinc.com