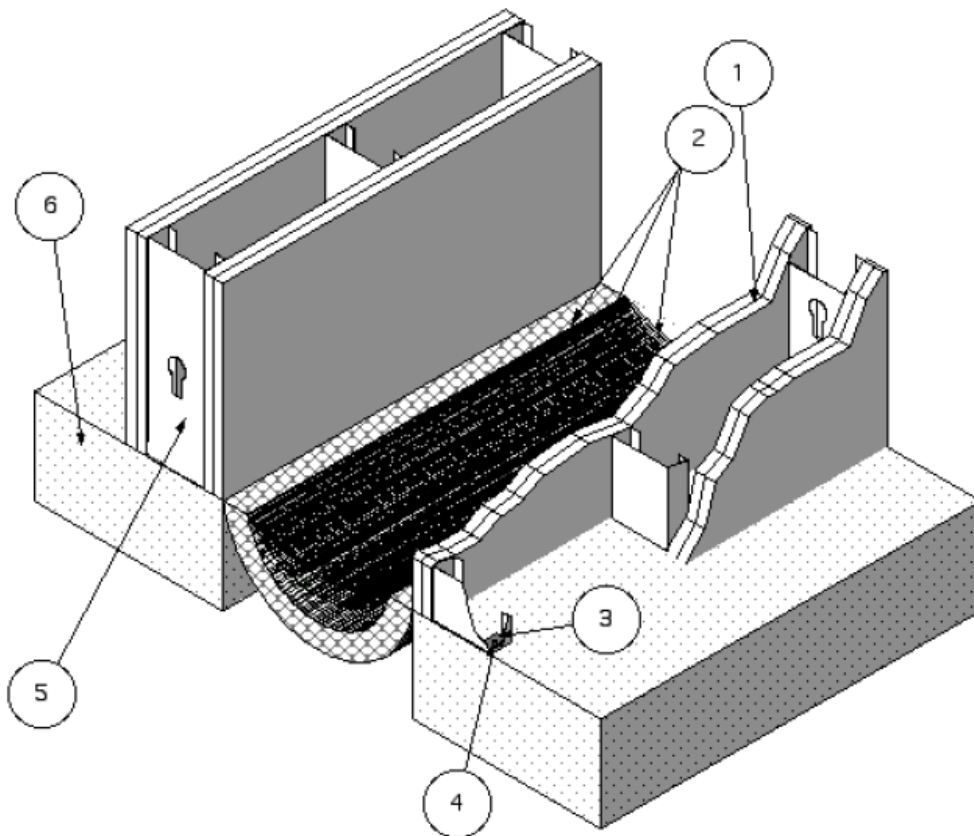

MM SYSYEMS OPCO LLC
Design No. MM/EJH 120-05
(Formerly CEJ 500F)
Fire Resistive Joint System
Pyro-Flex® PF-2012CF
ASTM E1966, UL 2079
Rating: 2 Hour
UL 2079
L-Rating: less than 1 SCFM/LF



- 1. GYPSUM WALL ASSEMBLY:** A two hour rated wall assembly constructed of the following: 25 GA galvanized steel studs spaced 24 in. on center (oc), measuring 3-5/8 in. wide with 1-1/4 in. legs. Studs attached with min. #6 × 3/8 in. long steel stud framing screws to channel shaped floor and ceiling runners measuring 1/2 in. deep × 3-5/8 in. wide, which are secured to floor and ceiling with 1 in. long concrete

fasteners spaced max. 18 in. oc. Studs and runners covered with two layers of 5/8 in. thick, Type X gypsum wallboard on each face. The base layer of gypsum wallboard fastened to steel studs with #6, 1-1/8 in. long bugle-head Phillips drywall screws spaced 12 in. oc. The face layer of gypsum wallboard fastened with #6, 1-5/8 in. long bugle-head Phillips drywall screws spaced 8 in. oc.



Joint Tape and Compound – Vinyl or casein, dry or premixed joint compound applied to face layers of gypsum wallboard in two coats to all exposed screw heads and gypsum wallboard joints. A min. 2 in. wide paper, plastic, or fiberglass tape embedded in first layer of compound over joints in gypsum wallboard. A min. joint depth of 6 in. created from face layer of gypsum wallboard to face layer of gypsum wallboard. A min. joint depth of 12 in. created from face layer of gypsum wallboard to face layer of gypsum wallboard

2. JOINT TREATMENT: Expansion Control, Fire Resistive Joint System

CERTIFIED PRODUCT: MM Systems OPCO LLC, Pyro-Flex® PF-2012CF Series

The joint treatment is composed of mechanical components attached to the existing field construction. The max. joint width is 12 in. Design tested and illustrated at max. joint width. Nominal joint width illustration (installed configuration) may differ. Joint treatment shall be installed in accordance with Listed Manufacturer's installation instructions.

- 3. C-CHANNEL:** Channel shaped floor and ceiling runners measuring 1/2 in. deep × 3-5/8 in. wide, which are secured to floor and ceiling with 1 in. long concrete fasteners spaced max. 18 in. oc, or a continuous 1 in. wide, min. 24 GA steel tack strip. The tack strip may be either a flat or a formed shape. Tack strips must run the full length of the joint.
- 4. FASTENERS:** Min. 1/4 in. × 1 in. long concrete fasteners, spaced max. 24 in. oc, secure the joint treatment to the concrete floor assembly.
- 5. STEEL STUDS:** Min. 25 GA galvanized steel studs spaced 24 in. oc, measuring 3-5/8 in. wide with 1-1/4 in. legs.
- 6. CONCRETE FLOOR ASSEMBLY:** Two hour rated concrete floor assembly made from either lightweight or normal weight concrete with a density of 100-150 pcf, with a min. thickness of 4-1/2 in. at the joint face. When blockouts are required, overall slab thickness may vary to accommodate various blockout depths (longitudinal recesses) formed in the concrete, to house the joint treatment. The blockout width may also vary without restriction.

Consult the listing report on the Directory of Building Products (<https://bpdirectory.intertek.com>) for the edition of the standard(s) evaluated.

Compliance of the assembly described in this Design Listing with the referenced standard relies on verification that the assembly constructed in the field is consistent with that described herein. Intertek certified products may be verified by the approved Intertek label; other products must be verified by the Authority Having Jurisdiction as meeting the specifications stated herein.