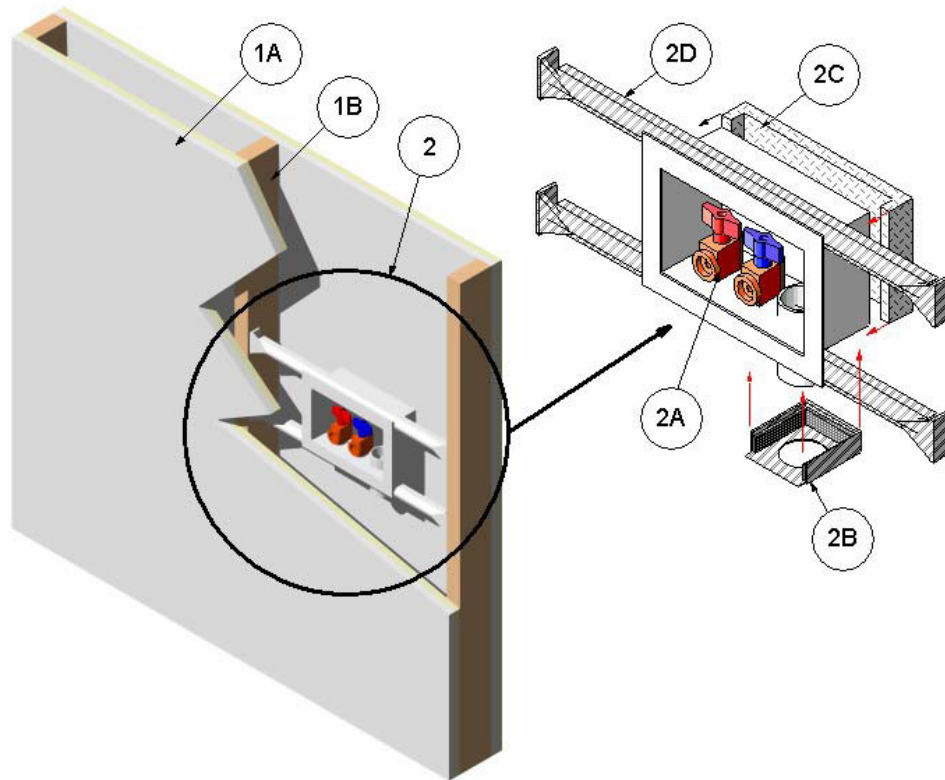


Oatey Co.  
Design No. OTC/PHV 120-01  
Supply Washing Machine Outlet Box  
ASTM E 814-06  
Rating: F-Rating: 2 Hour, T-Rating: 83 Min  
CAN/ULC S115-11  
Rating: FH-Rating: 2 Hour, FTH-Rating: 83 Min



**1. WALL ASSEMBLY:** Use 2 hour fire rated wall assembly consisting of the following:

- A. **WOOD STUDS** – Nominal 2 x 4 wood studs spaced max. 24 in. on center (oc) between double top plates and a single bottom plate. Attach studs with min. 16d framing nails to 2 x 4 floor and ceiling plates.

**STEEL STUDS** (Non-Loadbearing Assemblies Only) – Min. 26 GA steel studs located at max. 24 in. oc.

- B. **GYPSUM BOARD** – Cover studs and plates with two layers of 5/8 in. thick, Type X gypsum wallboard on each face. First layer gypsum wallboard fastened to wood studs with min. 1-1/4 in. drywall screws spaced max. 12 in. oc. Second layer gypsum wallboard fastened to wood studs with min. 1-5/8 in. drywall screws spaced max. 12 in. oc around the perimeter and across the field.



Joint Tape and Compound (Not Shown) – Apply vinyl or casein, dry or premixed, joint compound to face layers of gypsum wallboard in two coats to all exposed screw heads and gypsum wallboard joints. Embed min. 2 in. wide paper, plastic, or fiberglass tape in first layer of compound over joints in gypsum wallboard.

**2. PENETRATING ITEM:** Incorporate the following construction features:

**CERTIFIED MANUFACTURER:** Oatey Co.

**CERTIFIED PRODUCT:** WASHING MACHINE OUTLET BOX (Box Outside W x H Dimensions: 8-1/2 x 10 in. / Box Inside Opening W x H x D Dimensions: 8-1/2 x 5-1/2 x 3-3/4 in.)

Install the Washing Machine Outlet Box including:

- A. Dual nominal 1/2 in. diameter brass valves and threaded stems.
- B. The attachment of a "snap-in-place" metal connector plate with three sides, which are protected by three strips of 2-1/2 in. long x 3/4 in. wide (Rector Seal®) intumescent seal.

- C. Apply a nominal 1/2 in. thick 8 pcf piece of FyreWrap® or FireMaster™ 607 insulation material covering the back side of the Washing Machine Outlet Box. Overlap the FyreWrap® or FireMaster™ insulation material onto two end sides of the Washing Machine Outlet Box approximately 1/2 in. and secure it using 2 in. wide aluminum tape (not shown).
- D. Mount the Washing Machine Outlet Box using the two supplied adjustable mounting brackets designed to accommodate stud spacing from 16 in. to 24 in. oc with nails or screws.
- E. Oatey assemblies can be installed on each exposed side of common separation walls when installed at min. in adjacent wall cavities.

**3. DRAINAGE PIPE:** (Not Shown) Use a 2 in. diameter PVC drainage pipe attached to a "snap-in-place" metal connector plate that is attached to the Washing Machine Outlet Box.

Consult the listing report on the Directory of Building Products (<https://bpdirectory.intertek.com>) for the edition of the standard(s) evaluated.

*Compliance of the assembly described in this Design Listing with the referenced standard relies on verification that the assembly constructed in the field is consistent with that described herein. Intertek certified products may be verified by the approved Intertek label; other products must be verified by the Authority Having Jurisdiction as meeting the specifications stated herein.*