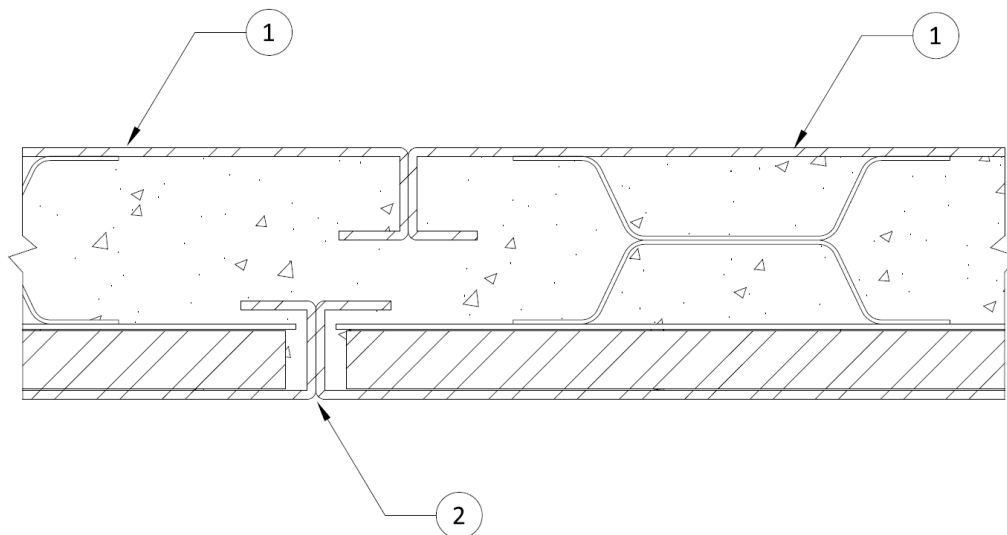


---

**Titan Steel Door, LLC**  
**Design No. TSD/MWP 60-01**  
**Metal Wall Panel**  
**Titan Armor Panel**  
**ASTM E119, CAN/ULC S101, UL 263**  
**Rating: 1 Hour, Load Bearing Wall Assembly**  
**Max. Load: 1700 PLF**

---



**1. TITAN ARMOR PANEL:** Fire Rated Steel Wall Panel

**CERTIFIED PRODUCT:** Titan Steel Door, LLC, Armor Panel

Factory fabricated, concrete filled, metal panels with shiplap, keyway joints.

**2. JOINT DETAIL:** Tightly connect opposing shiplap joints. Seal together with intermittent, 1-1/2 in. welds along seams on both sides, 12 in. oc. Fill panels with minimum 1,800 psi Fc concrete sand aggregate concrete mix, QUIKCRETE® Mason Mix Type S mortar with a mix ratio of 2.5 gallons of water per 80 lbs. of mix.

Consult the listing report on the Directory of Building Products (<https://bpdirectory.intertek.com>) for the edition of the standard(s) evaluated.

*Compliance of the assembly described in this Design Listing with the referenced standard relies on verification that the assembly constructed in the field is consistent with that described herein. Intertek certified products may be verified by the approved Intertek label; other products must be verified by the Authority Having Jurisdiction as meeting the specifications stated herein.*